

INSTRUCTIONS

TW-TA/TE-ARM-SP & TW-TA/TE-SP

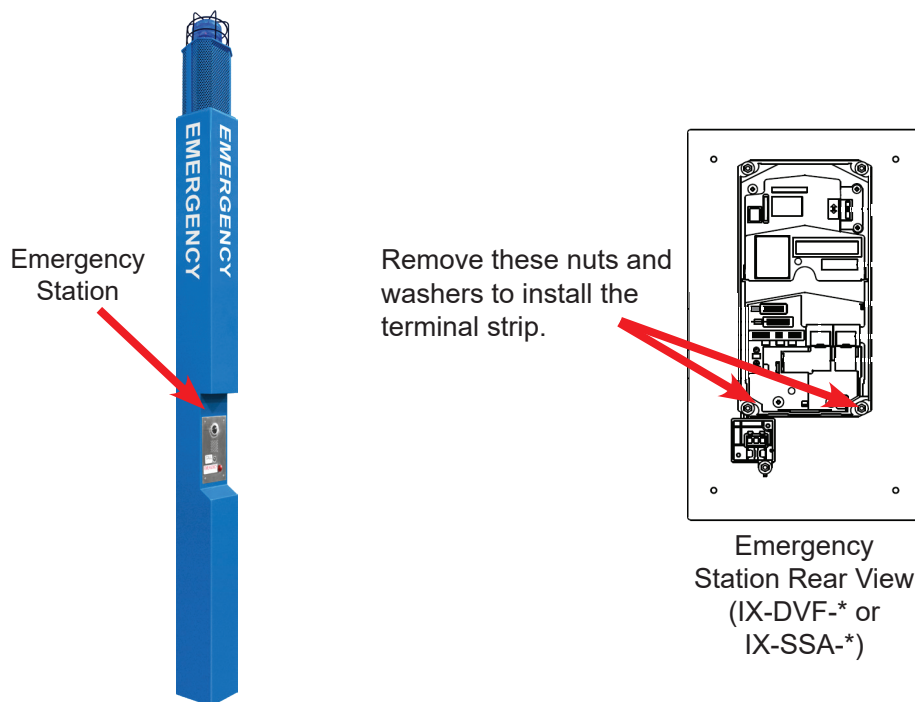
Screwless Terminal Strip Installation

Overview

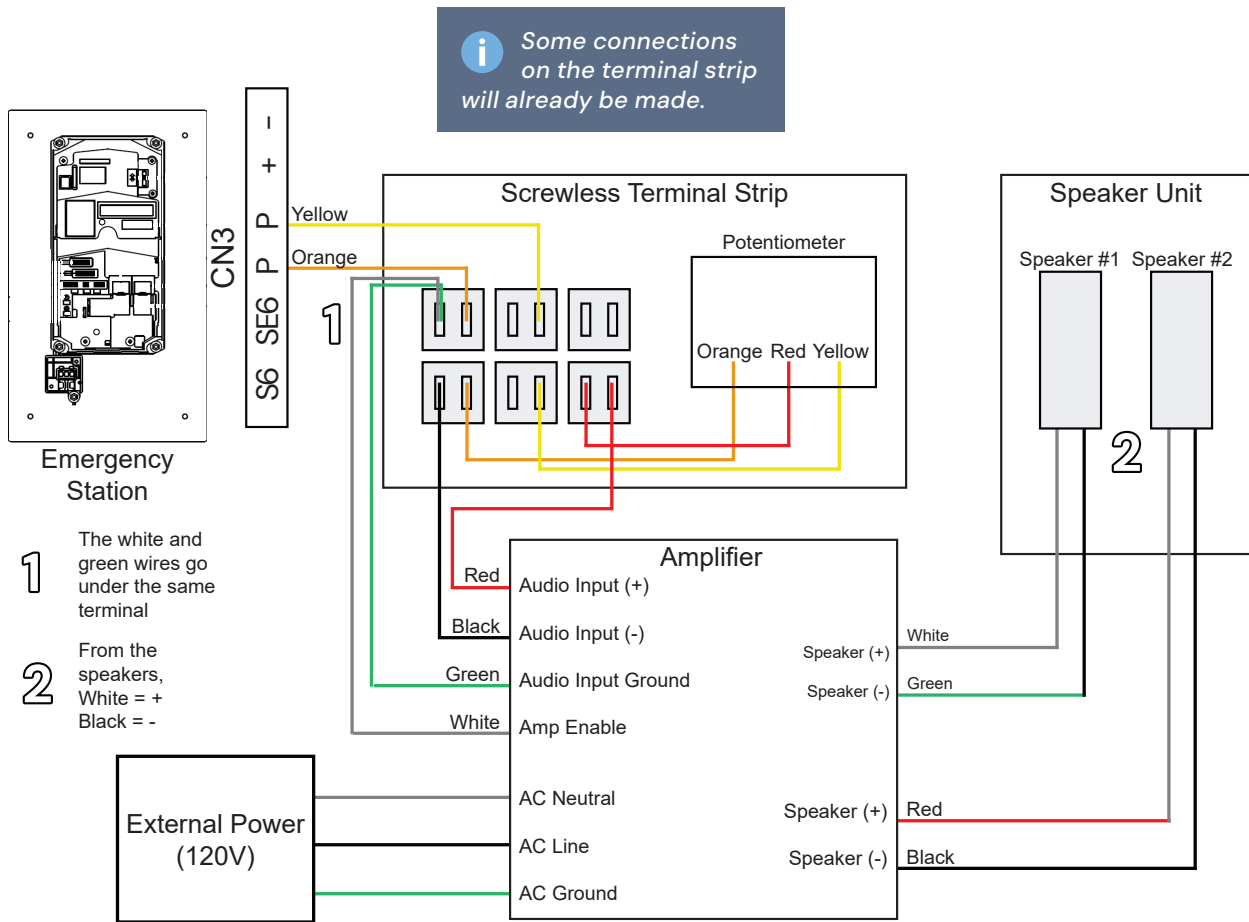
These instructions go over installing a screwless terminal strip onto an IX|IXG Series emergency station. The strip is designed for use in an Aiphone emergency tower featuring a high-power speaker, acting as an interface between the emergency station and the amplifier that feeds the speaker.

Attaching the Terminal Strip to the Emergency Station

If the emergency station has already been mounted to the tower, loosen the security screws to gain access to the back of the station. Remove the black plastic door on the back of the emergency station that covers the ports and wires. Make the wiring connections shown on page 2 of this guide before continuing. Remove the nuts and washers on the bottom two screws, then attach the terminal strip to those screws. Reattach the nuts and washers to secure it in place.

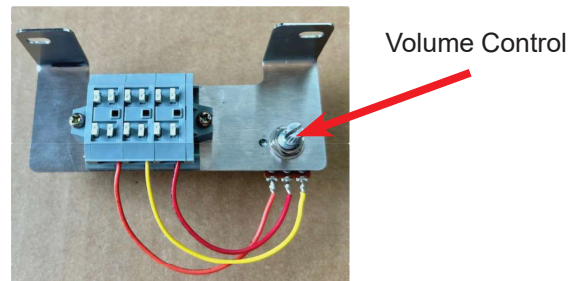


Terminal Strip Wiring Connections



Adjusting Volume

The volume control is located to the right of the terminal strip in the form of a potentiometer. Turn it left to lower the volume and right to increase it. To test the volume, place a call or page to the emergency station from another IX|IXG Series station.



Additional Resources

Full tower with speaker instructions:

www.aiphone.com/speaker-tower-instructions

Full tower with speaker and camera arm instructions:

www.aiphone.com/speaker-tower-with-camera-arm-instructions