

RY-IP44

Input/Output Network Adaptor

Programming Manual For use with IX Series



Note: *IX Mobile should be included at the start of the creation of a new IX Series system, rather than added after the system as been configured. Refer to pages 9-11 of this manual for a walk-through of this process.*

ATTENTION:

This manual is for programming the RY-IP44 with the IX Series system only. Refer to the IX Series Installation and Setting Manuals for complete installation/programming information.

For instructions featuring the RY-IP44 with the IS IP Series, visit www.aiphone.com/ISIP-RYIP44
For instructions featuring the RY-IP44 with the IPW-1A, visit www.aiphone.com/IPW1A-RYIP44

Package Contents

- RY-IP44
- 6 Screw Terminal Blocks
- MAC Address Label

Installation Requirements

- General understanding of IX Series programming
- 9-30V DC power supply (sold separately)
- Unique IP address for each adaptor

Overview / Description

The RY-IP44 is a Barix “Barionet 50” with proprietary Aiphone firmware for use with IPW-1A, IS, or IX Series Stations.

The 4 individually programmable contact outputs can be used to trigger remote door release or external signaling, triggering a contact closure while calling, communicating, or both calling and communicating.

The 4 individually programmable contact inputs can be used to trigger a call between two IX Series stations. For example, use this function to trigger during an invalid card swipe, motion detector activation, or selective calling from multiple call buttons.

The RY-IP44 is also used as the Mobile App Server for IX Mobile. An RY-IP44 is needed for every 8 instances of IX Mobile and is used to alert the mobile device if it goes out of wireless network range.

When using the RY-IP44 only as a Mobile App Server for IX Mobile, begin on page 6 as SIF and CGI are not used in this instance. Refer to pages 8-14 for steps on creating a system with IX Mobile and configuring IX Mobile.

Note that the RY-IP44 is not a PoE device, and requires a separate 9-30v DC power supply. It is recommended to use the Aiphone PS-1208UL.

Updating Firmware on RY-IP44

Ensure that the RY-IP44 has the current firmware loaded. The current version is 2.2 can be downloaded from the Aiphone website (www.aiphone.com/home)

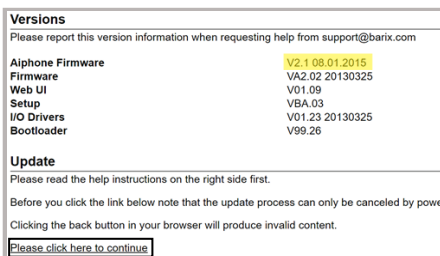
Using a web browser, access the RY-IP44 using its default IP address of 192.168.1.45. The landing page will be the **Device Status** screen.



Step 1
Click **CONFIGURATION**

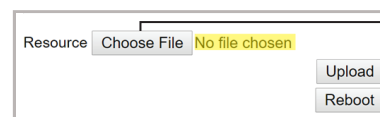


Step 2
Click **UPDATE**

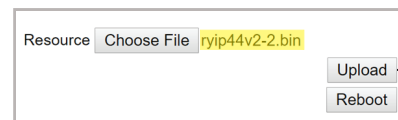


Step 3

Note the loaded Aiphone Firmware. If it is V2.2, it is up to date. If not, click **Please click here to continue**.



Step 4
Click **Choose File** and navigate to and select the current firmware.



Step 5
Once selected, click **Upload**.

ryip44v2-2.bin successfully loaded.
Click on **update** to continue, or reset the device.

Step 6

After the station has successfully loaded the new firmware, click **Update**, then reboot the adaptor.

Enabling CGI & SIF on IX Series 2 Stations

Important:

The intercom system should be fully programmed and operational prior to programming for the RY-IP44 adaptor integration.

IX Series stations use **SIF** events to interact with and trigger the contact outputs of the RY-IP44, and **CGI** is used when the RY-IP44 interacts with a station using the contact inputs. Enabling both **SIF** and **CGI** for each station and then configuring their settings are required. Once these parameters are set, the event triggers are configured. Each of these steps are shown below using the IX Support Tool software.

Open IX Support Tool and select a system program file by clicking **File > Selecting Existing System**.

Change IX Support Tool to Station View.

Function Settings

- Door Release
- Network Camera Integration
- Paging Settings
- Bathroom Call
- Email
- CGI
- SIF**
- Record

Station Number:

100

Station Name:

IX-DV

Location:

Station Type:

IX-DV, IX-DVF(-*)

Select Station to Edit

Type: All

Number: 100

Previous Select Next

Step 1

Expand **Function Settings** and select **SIF** from menu on left.

Step 2

Use the Number drop-down under **Select Station to Edit** and choose the door station. Click **Select** and ensure that the door station is shown in upper left of the screen.

CGI

CGI Functionality ☒ Enable ☐ Disable

SIF

SIF Functionality ☒ Enable ☐ Disable

SIP URI Format ☐ Enable ☒ Disable

SIF Settings

#	Program Type	IPv4	IPv6	Destination Port	SSL	Connection
	0000-1111 *	1.0.0.1-223.255.255.254 or hostname(1-64 alphanumeric characters) *	::FF:0-FFF:FFF:FFF:FFF:FFF:FFF:FFF:FFF or hostname(1-64 alphanumeric characters) *	1-65535 *		
01	0100	192.168.1.45		10000	Disable	Socket

Step 3

Select the Enable radio buttons for **CGI** and **SIF Functionality**

Step 4

Under SIF Settings, enter a Program Type, the IP Address, and Destination Port for the RY-IP44 relay. Use a separate line for each RY-IP44 being used.

Program Type: Any binary number between 0100 and 1111
 IPv4: IPv4 Address assigned to RY-IP44
 Destination Port: Port number assigned to RY-IP44 (10000 is default)
 SSL: Select if SSL will be Enabled or Disabled (Set to disable)
 Connection: Select if connection is Socket or HTTP (Set to socket)

Step 5

Choose the Transmission Trigger Events that this station will need to send to the RY-IP44. The **Begin Outgoing Call**, **Begin Communication (Source)**, **End Communication**, and **Change contact** events are the most common and will cover most aspects of RY-IP44 integration.

Step 6

Click **Update** to save changes.

Repeat Steps 2-6 for each IX 2 station interacting with the RY-IP44 relay.

Event	01
Begin Outgoing Call	<input checked="" type="checkbox"/>
Begin Communication (Source)	<input checked="" type="checkbox"/>
End Communication	<input checked="" type="checkbox"/>
Change contact	<input checked="" type="checkbox"/>
Unit error	<input type="checkbox"/>
Periodical Transmission	<input type="checkbox"/>
Initialization Notice	<input type="checkbox"/>
End Outgoing Call	<input type="checkbox"/>
Begin Incoming Call	<input type="checkbox"/>
End Incoming Call	<input type="checkbox"/>
Latch Reset	<input type="checkbox"/>
Change Call Destination	<input type="checkbox"/>
Call Failure	<input type="checkbox"/>
Begin Incoming Page	<input type="checkbox"/>
End Incoming Page	<input type="checkbox"/>
Begin Monitored	<input type="checkbox"/>
End Monitored	<input type="checkbox"/>

The steps above are specific to IX Series 2 stations. IX Series 1 stations will be configured differently. Please follow the steps on pages 4 and 5 for any IX Series 1 stations (IX-DA, IX-BA, IX-MV).

If the system does not contain any IX Series 1 stations, go to the bottom of page 5 to upload settings to stations.

Creating the SIF.ini File (For IX Series 1 Only)

Important:

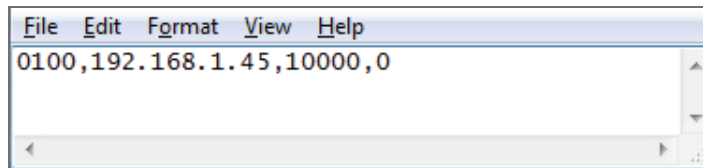
The intercom system should be fully programmed and operational prior to programming the RY-IP44 adaptor.

Creating a simple line of code, in the form of a .ini file, is required to allow an IX Series 1 (IX-DA, IX-BA, IX-MV) device to communicate to the RY-IP44. The example below is shown using a common text editor (i.e. Notepad), and saving it with an .ini extension.

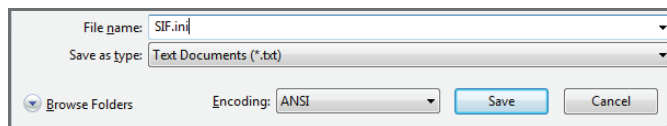
Program Type:	A binary number between 0100 and 1111.
RY-IP44 IP Address:	IP address assigned to the RY-IP44 (Must be unique for each RY-IP44).
Destination Port:	Port number assigned on the RY-IP44. The default port is 10000. This can be set in the range from 1 to 65535 (Must be unique for each RY-IP44).
SSL Y/N :	This device does not use SSL. Input 0 for no.

Example Text File:

0100	,192.168.1.45	,10000	,0
Program Type	RY-IP44 IP Address	Destination Port	SSL Y/N



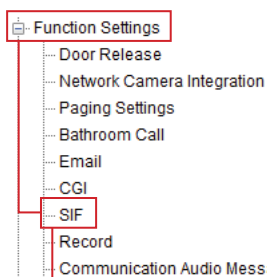
Save the SIF file with a .ini extension (.ini must be typed manually) to a location on the PC being used for programming the IX Series 1 stations. This file must be uploaded to each device associated with the RY-IP44 using the instructions that follow.



Enabling CGI & SIF on IX Series 1 Stations

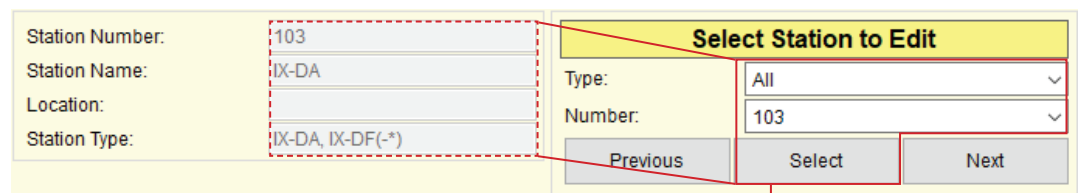
Open IX Support Tool and select a system program file by clicking **File > Selecting Existing System**.

Change IX Support Tool to **Station View**.



Step 1

Expand **Function Settings** and select **SIF** from menu on left.



Step 2

Use the Number drop-down under **Select Station to Edit** and choose the door station. Click **Select** and ensure that the door station is shown in upper left of the screen.

Enabling CGI & SIF on IX Series 1 Stations (continued)

● CGI	
CGI Functionality	<input checked="" type="radio"/> Enable <input type="radio"/> Disable
● SIF	
SIF Functionality	<input checked="" type="radio"/> Enable <input type="radio"/> Disable
SIP URI Format	<input type="radio"/> Enable <input type="radio"/> Disable

Step 3

Select the Enable radio buttons for **CGI** and **SIF Functionality**

SIF File Management

SIF Communication Settings (sif.ini)

Download Browse Upload

Step 4

Click **Browse** and navigate to where the SIF.ini file is saved and select it. Click **Upload** to send it to the station.

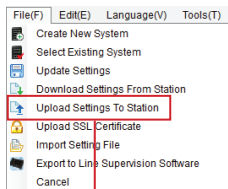
Step 5

Click **Update** to save changes.



Repeat Steps 2-5 for each IX Series 1 station interacting with the RY-IP44 relay.

Upload Settings to Station



Step 1

Click **File, Upload Settings to Station**

Setting File Upload

Select the station(s) to upload the Setting File(s):

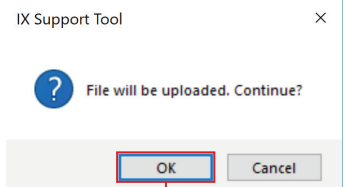
Select	Number	Name	Location	Station Type	Status
<input checked="" type="checkbox"/>	100	IX-DV		IX-DV, IX-DV(-*)	-
<input checked="" type="checkbox"/>	101	IX-SS-2G		IX-SS-2G	-
<input checked="" type="checkbox"/>	102	IX-RS		IX-RS-*	-
<input checked="" type="checkbox"/>	103	IX-DA		IX-DA, IX-DF(-*)	-
<input checked="" type="checkbox"/>	200	Front Desk		IX-MVT-*	-
<input checked="" type="checkbox"/>	201	Security		IX-MVT-*	-

Select Station by Type: All

Select file type to be uploaded

Step 2

Check the box beside each station that was modified, then click **Settings** under "Select file type to be uploaded"

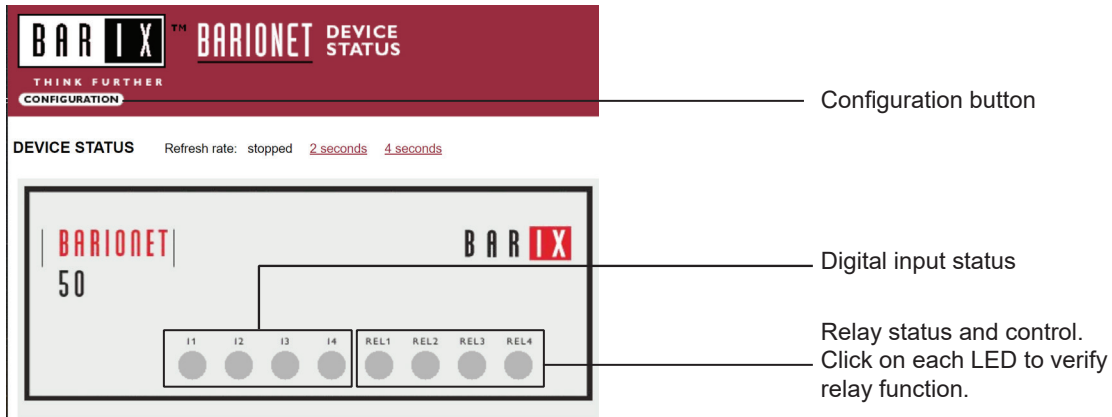


Step 3

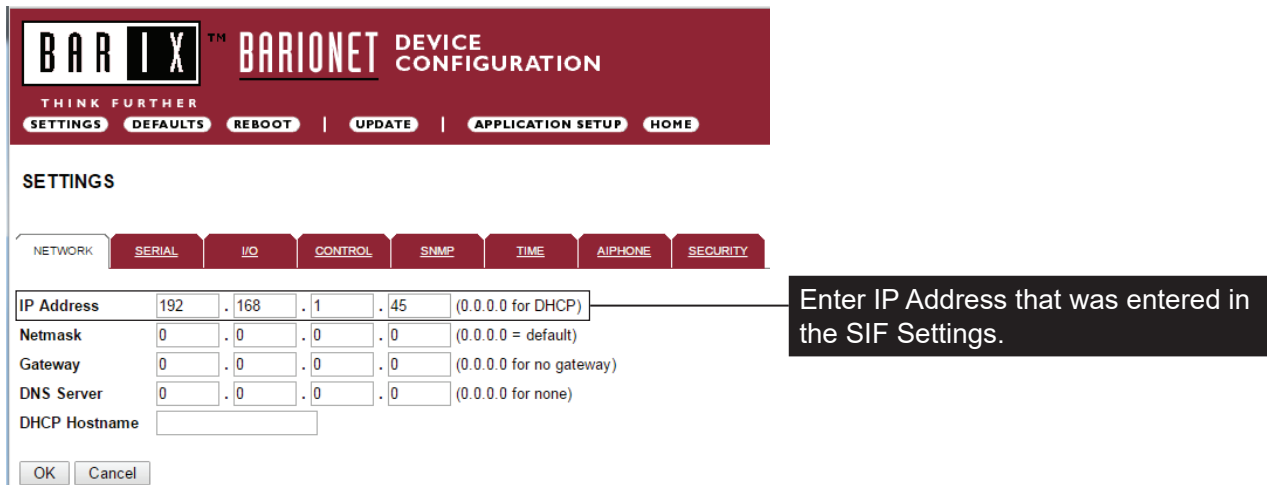
You will be asked if you want to continue. Click **OK**. Confirm Success/Failed in the Status Column.

Configuring the RY-IP44

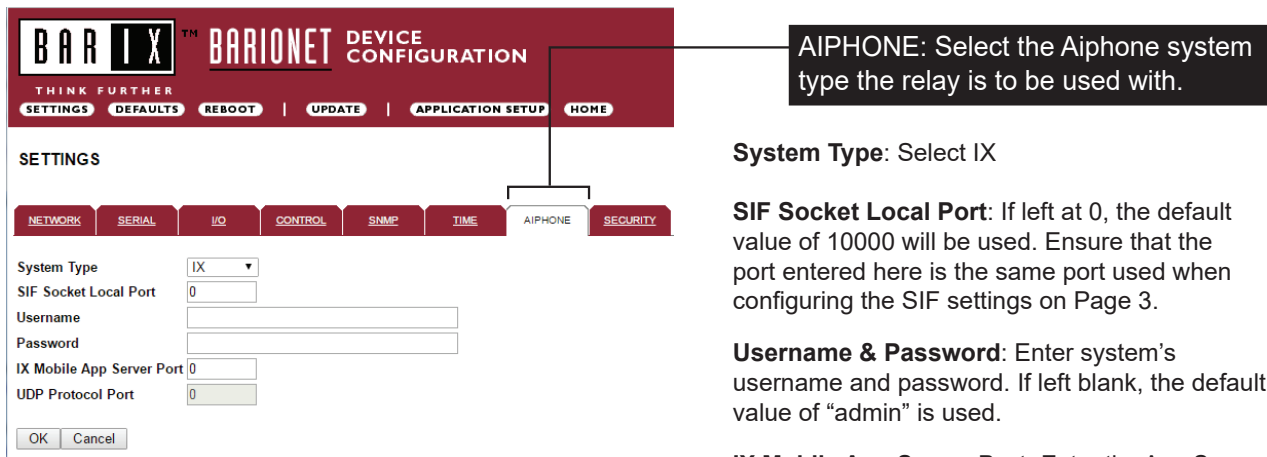
Using a web browser, access the RY-IP44 using its default IP address of 192.168.1.45. The landing page will be the **Device Status** screen.



Click the **CONFIGURATION** button to open the **Device Configuration** screen. This is where a unique **IP Address**, **Netmask**, and **Gateway** can be assigned to the adaptor.



The Aiphone system type that the adaptor is being integrated with will need to be selected. Click the **AIPHONE** tab. Use the drop down by **System Type** to select IX.



System Type: Select IX

SIF Socket Local Port: If left at 0, the default value of 10000 will be used. Ensure that the port entered here is the same port used when configuring the SIF settings on Page 3.

Username & Password: Enter system's username and password. If left blank, the default value of "admin" is used.

IX Mobile App Server Port: Enter the App Server port configured in IX Mobile. If left blank, the default value of 5061 is used.

IX Series: Relay Output Programming

From the **DEVICE CONFIGURATION** screen, click **APPLICATION SETUP**.



Relay Action options:

- Door Release - Normally-Open
 - Door Release - Normally-Closed
 - Active while Calling from Source
 - Active while Communicating
 - Active during Calling and Communicating
- } Relay will trigger when the associated station's door release contact is triggered.
- } Relay will trigger when the associated station calls or communicates.

When the relay action is set for one of the “Door Release” options, the relay on the RY-IP44 will trigger when the associated station's door release contact is triggered.

When the relay action is set for any of the “Active While” options, the relay will trigger when the associated station calls or communicates at any priority level.

When the relay action is set for Door Release, the station number to be entered will always be that of the door station. The door station is the device that will be sending the SIF command/event to the RY-IP44 adaptor that its relay status has changed.

- Enter the **Station number** of the station sending the SIF event to the RY-IP44 to be associated with this output.
- Select the relay condition from the **Relay Action** drop down menu.
- Click on **Apply Settings**, then click **Reboot** to restart the adaptor with the saved changes.

Relay Output Functionality

	Relay Station Number	Relay Action
1	<input type="text" value="100"/>	Door Release: Normally-Open
2	<input type="text" value="101"/>	Door Release: Normally-Open
3	<input type="text" value="0"/>	Door Release: Normally-Open
4	<input type="text" value="0"/>	Door Release: Normally-Closed
		Active While Calling From Source
		Active While Communicating
		Active While Calling From Source And Communicating

When the entered station is active, the associated relay will trigger based on the Relay Action settings.

IX Series: Input Programming

Note: The RY-IP44 inputs can have different calling rules than the default calling rule set for a station during the IX Series programming.

- Select the call-in priority level for each input using the **Priority** drop down menu.
- Enter the target IP address of the station to place the call.
- Click **Apply Settings** to save the changes. Do not reboot the adaptor at this time.
- Click **APPLICATION SETUP** to return to the Application Configuration Screen.

Remote Call-In		Station Placing Call				Setup
Relay	Priority	Target IP				
1	Normal	0	0	0	0	Destinations
2	Normal	0	0	0	0	Destinations
3	Priority	0	0	0	0	Destinations
4	Urgent	0	0	0	0	Destinations

- Click on **Destinations** next to the input being configured. In the new window, enter the station number of the master station(s) to be called when the input is triggered.
- When the target IP address is a door station, a maximum of 20 master stations can be entered.
- When the target IP address is a master station, a maximum of 20 master stations or 1 group can be entered. A group can consist of up to 50 master stations and must be created using the IX Support Tool.
- Check the **Enable** box beside each station entered.

Click on **Apply Settings**, then click **Reboot** to restart the adaptor with the changes.

Destinations for Remote Call-In		
Input 1		
#	Station Number	Enable
1	200	<input checked="" type="checkbox"/>
2	0	<input type="checkbox"/>
3	0	<input type="checkbox"/>

Apply Settings

IX Mobile

IX Mobile is an app for iOS (v8.0 – v12.1) and Android (v4.1+) turning a mobile device into an IX Series sub master station, allowing for 2-way audio communication, video, and door release. 4 programmable shortcut buttons can be configured to initiate a call to specific stations, groups, or page.

The following steps assist in the configuration of an IX Series system with IX Mobile and the configuration of IX Mobile on a mobile device.

Requirements: A system must contain at least one IX-MV or MV-7-* when using IX Mobile and one RY-IP44 for every 8 instances of IX Mobile. IX Mobile also requires a constant connection to the network the IX Series system is deployed to, utilizing either a Wi-Fi connection or a VPN.

Configuring the IX Mobile Server

Set the RY-IP44 for use with the IX Series (refer to page 4).

Enter the Static IP address for each of the mobile devices in the **IX Mobile Server Functionality** table.

If DHCP is required, static reservations will be required for each mobile device.

IX Mobile Server Functionality

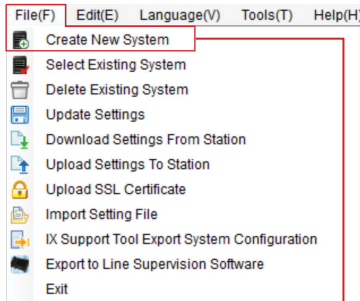
Device	IP Address
1	0 . 0 . 0 . 0
2	0 . 0 . 0 . 0
3	0 . 0 . 0 . 0
4	0 . 0 . 0 . 0
5	0 . 0 . 0 . 0
6	0 . 0 . 0 . 0
7	0 . 0 . 0 . 0
8	0 . 0 . 0 . 0

Apply Settings

Click on **Apply Settings**, then click **Reboot** to restart the adaptor with the changes. Refer to pages 7-11 for steps on adding a mobile device to the IX system using the IX Support Tool and for setting up the mobile device.

Creating a System Including a Mobile Device

Connect all IX Series stations and the programming PC to a PoE switch. Open IX Support Tool on the programming PC.



Step 1

From the Menu bar, click **File**, then **Create New System**.

Step 2

Enter a **System Name** and enter the quantities of each type of station to be programmed in the appropriate boxes. (Note: every Mobile device will be considered an IX-MV)
Click **Next** when done.

The 'New System' dialog box is shown with the following fields and options:

- System Name:** IX Mobile
- IP Version:** IPv4
- Enter contact information (optional):**
- Installer Information:** Displayed in CONTACT INFORMATION of IX-MV7-*
- Owner Information:**
- Notes:**
- Expanded System:** ☐
- Wizard Programming:** ☒ Yes ☐ No
- Automatically configure door release for all stations?** ☒ Yes ☐ No
- IX Support Tool Settings:**
 - Enter the number of stations:**
 - Master Stations:** IX-MV7-*: 1 Station(s), IX-MV: 1 Station(s)
 - Video Stations:** IX-DV, IX-DVF(-): 2 Station(s), IX-EA, IX-EAU: Station(s), IX-DA, IX-DF(-): Station(s)
 - Audio Stations:** IX-SSA(-): Station(s), IX-SS-2G: Station(s), IX-FA: Station(s), IX-SPMIC: Station(s), IX-BA, IX-SS(-): Station(s), IX-RS-*: Station(s)
 - Others:** IXW-MA: Station(s)

Buttons: Restore Setting File, Import System Configuration, Next, Cancel.

The 'System Configuration' dialog box is shown with the following sections:

- 1. Select the setting file to be linked with the chosen station:**
- Station Settings List:**
- Advanced Settings:** Address Book, Door Release, Station Details (highlighted), Batch IP Address Configuration.
- System Management:** Add New Station, Station Removal.

Step 3

The **System Configuration** page will open and the **Station Settings List** will be populated based on what was entered in step 2.
Click on **Station Details**.

The 'Station Details' dialog box is shown with the following sections:

- Locations must be created in the Location Registry before they can be assigned to a Station.**
- Text in red are required settings.**
- Station Information:**
- Identification:**
- Network Settings:**
- Expanded System:**
- Station Type:**
- Hostname:**
- IP Version:**
- Static / DHCP:**
- IP Address:**
- Subnet Mas:**
- Select Station Type to be set to Expanded System:**
- Buttons:** All, Select, Unselect, Location Registry, OK (highlighted), Cancel.

Step 4

The **Station Details** page will open. On this page, a unique number and name can be assigned to each station in the system. The IP Address assigned to each station can also be changed from what Support Tool automatically assigned. When done making changes, click **OK**.

Creating a System Including a Mobile Device (continued)

The stations can be associated to the settings automatically or manually. Automatic Association will pair like type stations from the top Station Settings List to the Station List below. This guide will show the Manual Association process.

Note: Mobile devices can not be associated during this process.

Step 5.1

Select the setting file to be associated.

1. Select the setting file to be linked with the chosen station:

Station Settings List							
Select	Number	Name	Location	Station Type	Hostname	IP Address	Associated
<input checked="" type="radio"/>	101	Front Desk		IX-MV7-*		192.168.1.10	-
<input type="radio"/>	102	Mobile		IX-MV		192.168.1.11	-
<input type="radio"/>	201	Front Door		IX-DV, IX-DVF(-*)		192.168.1.12	-
<input type="radio"/>	202	Back Door		IX-DV, IX-DVF(-*)		192.168.1.13	-

Step 5.2

Select the scanned station to be associated to the setting file.

Advanced Settings

Address Book Door Release

Station Details Batch IP Address Configuration

System Management

Add New Station Station Removal

2. Select the station to associate with the setting file.

☐ Enter station MAC address: ☐ Different Networks

☒ Search and select station within local network: Station Search Protocol

Station List						
Select	Number	Name	Location	Station Type	MAC address	Associated
<input checked="" type="radio"/>				IX-MV7-*	00:0B:AA:2F:02:DB	-
<input type="radio"/>				IX-DV, IX-DVF(-*)	00:0B:AA:27:02:CC	-
<input type="radio"/>				IX-DV, IX-DVF(-*)	00:0B:AA:27:03:1A	-

Step 5.3

Click Apply to associate the selected station with the selected file. Repeat process until all stations are associated ensuring that the mobile device is **NOT** selected from the upper Station Settings List.

Apply Associate Automatically Station Search

Scroll Down

Scroll Down

Step 5.4

Confirm that each IX station has been successfully associated in the Status column.

Note: The IX Mobile station should never appear in the Associated Stations List. The process for loading the setting file to the mobile device will be covered later in this guide.

Station(s) that have been associated with a setting file are listed below.

Associated Stations List							
Select	Number	Name	Location	Station Type	IP Address	MAC address	Status
<input type="checkbox"/>	101	Front Desk		IX-MV7-*	192.168.1.10	00:0B:AA:2F:02:DB	Success
<input type="checkbox"/>	201	Front Door		IX-DV, IX-DVF(-*)	192.168.1.12	00:0B:AA:27:02:CC	Success
<input type="checkbox"/>	202	Back Door		IX-DV, IX-DVF(-*)	192.168.1.13	00:0B:AA:27:03:1A	Success

Remove Association Retry Association

Back Next Cancel

Step 5.5

If all stations show Success, click Next.

Step 5.6

A warning will appear letting you know that some stations have not been associated. This is because Mobile can not be associated this way. Click OK to continue.

IX Support Tool

Warning: Some station have not been associated. Continue?

OK Cancel

Creating a System Including a Mobile Device *(continued)*

After each station has been associated with its individual station information, the setting file containing the rest of the system's information will need to be uploaded to each station. To upload the setting file, the programming PC will need to be in the same subnet as the associated stations. The PC's current IP address is displayed in the bottom left-hand side of this window.

Note: If the setting file is not uploaded, most functions and features will be unavailable to the stations.

Setting File Upload

Select the station(s) to upload the Setting File(s): Connection Status 3/3

Station List						
Select	Number	Name	Location	Station Type	IP Address	Status
<input checked="" type="checkbox"/>	101	Front Desk		IX-MV7-*	192.168.1.10	Available
<input type="checkbox"/>	102	Mobile		IX-MV		-
<input checked="" type="checkbox"/>	201	Front Door		IX-DV, IX-DVF(-*)	192.168.1.12	Available
<input checked="" type="checkbox"/>	202	Back Door		IX-DV, IX-DVF(-*)	192.168.1.13	Available

Note: The progress of each station will be displayed in the Status column. Unavailable stations may still be rebooting from the association process. If a station has rebooted and is still unavailable, ensure the programming PC is in the same subnet as the station.

Text in red are required settings.

Select Station by Type: All Select Unselect

This PC's IP Address: 192.168.1.100

Manual Date / Time Setup
Start Upload
Back
Next
Cancel

Step 6.1

Choose **All** from the **Select Station by Type** drop down, then click **Select**.

Step 6.2

Once station Status shows **Available** (may take a few minutes), click **Start Upload**.

Step 6.3

After successful upload, click **Next**.

After clicking Next in Step 6.3, you will be prompted to export settings. The settings must be exported prior to setting up the mobile devices with IX Mobile.

Export Settings

The system has been successfully configured. Alphone recommends to export and back up the system configuration files and leave them on-site with the end user.

Export

Browse For Folder

Select Folder

- Desktop
- > Creative Cloud Files
- > OneDrive
- > Jasen Dunn
- > This PC
 - > 3D Objects
 - Desktop
 - > Documents
 - > Downloads
 - > Music
 - > Pictures
 - > Videos
 - > Local Disk (C:)
 - > DVD RW Drive (D:)

Finish

Finish

Step 7.1

The **Export Settings** window will open. Click on **Export** and choose a destination on your PC to export the system settings to. Click **OK** to export and save the settings.

Export Settings

Use Export button to back up the system configuration files.

Export

Export successful

Save the setting file for back up. The setting file may be needed to restore the existing programming, customize settings, or add stations to the system at a later date.

The IX Support Tool will now allow for additional settings to be changed for system customization.

Finish


Step 7.2

Click **Finish**.

The Setting File must be exported in order to obtain the configuration file required to set up the IX Mobile devices. Click **File > IX Support Tool Export System Configuration** then follow the steps above.

IX Mobile Station Details

It is recommended that the station number, station name, and IP address that was assigned to each instance of IX Mobile in the Support Tool be written down for future reference when setting up the mobile devices. Please use the table below to document this information.



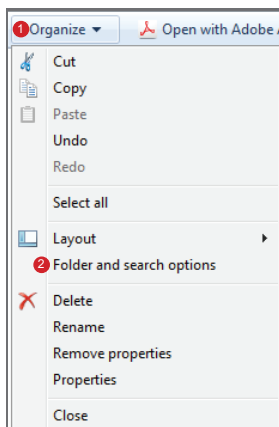
Note Station Information here to refer to later		
Number	Name	IP Address
		. . .
		. . .
		. . .
		. . .
		. . .
		. . .
		. . .
		. . .

Configuration File

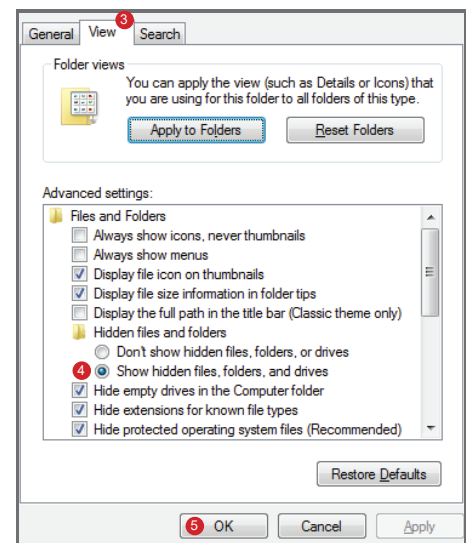
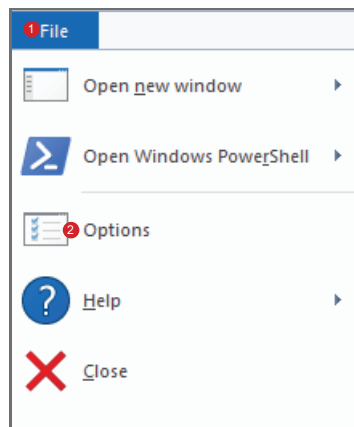
The exported settings file will have a configuration file for each station in the system. The configuration file for the mobile station will need to be uploaded to the mobile device using the steps on pages 11 and 12.

- The folder containing the configuration file may be hidden. To show hidden folders, open Windows Explorer and click **1 Organize** (Windows 7), or **File** (Windows 10). Click **2 Folder and search options** (Windows 7), or **Options** (Windows 10). Select the **3 View** tab and select the radio button beside **4 Show hidden files, folders, and drives**, then click **5 OK**.

Windows 7



Windows 10



- Navigate to the location that you exported the system settings to. Open the file and click on the Setting folder. Locate the configuration file with the same number that was assigned to the mobile station in IX Support Tool. Copy the configuration file to a location on the programming PC that can easily be transferred to the mobile device.

Configuration File Example:  **config-102-20181114112622**

App Installation and Setup for Apple

Download IX Mobile from the [App Store](#)SM



App Store is a service mark of Apple Inc.

- 1 Connect to the WiFi network associated with the IX Series system installation. Once connected, tap on the connected network.

- 2 Tap **Static** and enter the *IP Address* that was assigned when configuring the app with the IX Support Tool.

- 3 Connect the mobile device to the PC that has iTunes installed. Open iTunes and click **File Sharing**. Select **IX Mobile**. Click **Add File** and navigate to where the configuration file is saved. Select the file and click **Open**.

- 4 Launch the application on the mobile device. Tap the Menu icon.

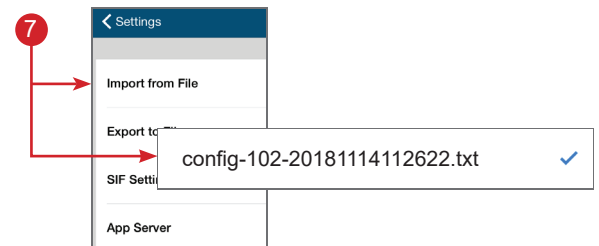
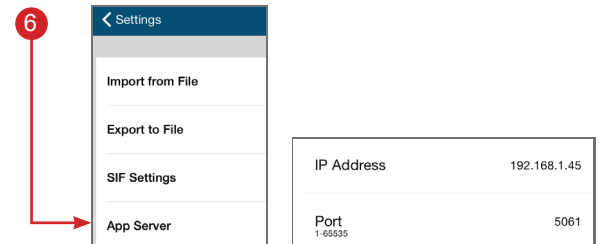
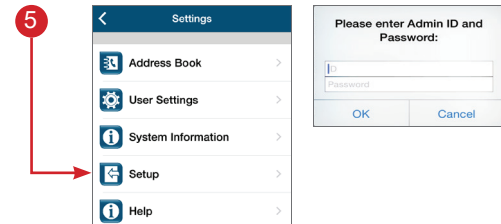
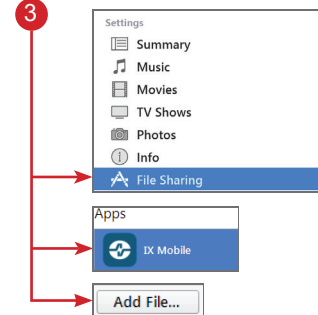
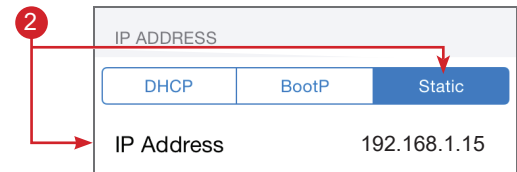
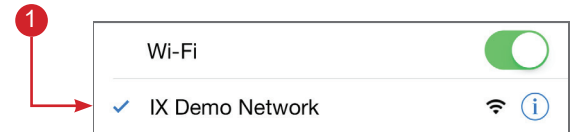
- 5 Tap **Setup**. Enter the Admin ID and Password and tap **OK**.
Default ID: admin
Default Password: admin

- 6 Tap **App Server**. Enter the IP Address and Port Number for the App Server (RY-IP44). Refer to page 11 for information on setting up the App Server.

- 7 Tap **Import from File**. Select the configuration file that was transferred to this device in Step 3. Tap **OK**.

- 8 A pop-up will appear stating “**New configuration applied.**”

- 9 To unlock the app, call the mobile device from a master station in the system.



Apple, the Apple logo, iPhone, iPad, iPod touch, and iTunes are trademarks of Apple Inc., registered in the U.S. and other countries. The App Store is a service mark of Apple Inc.

App Installation and Setup for Android

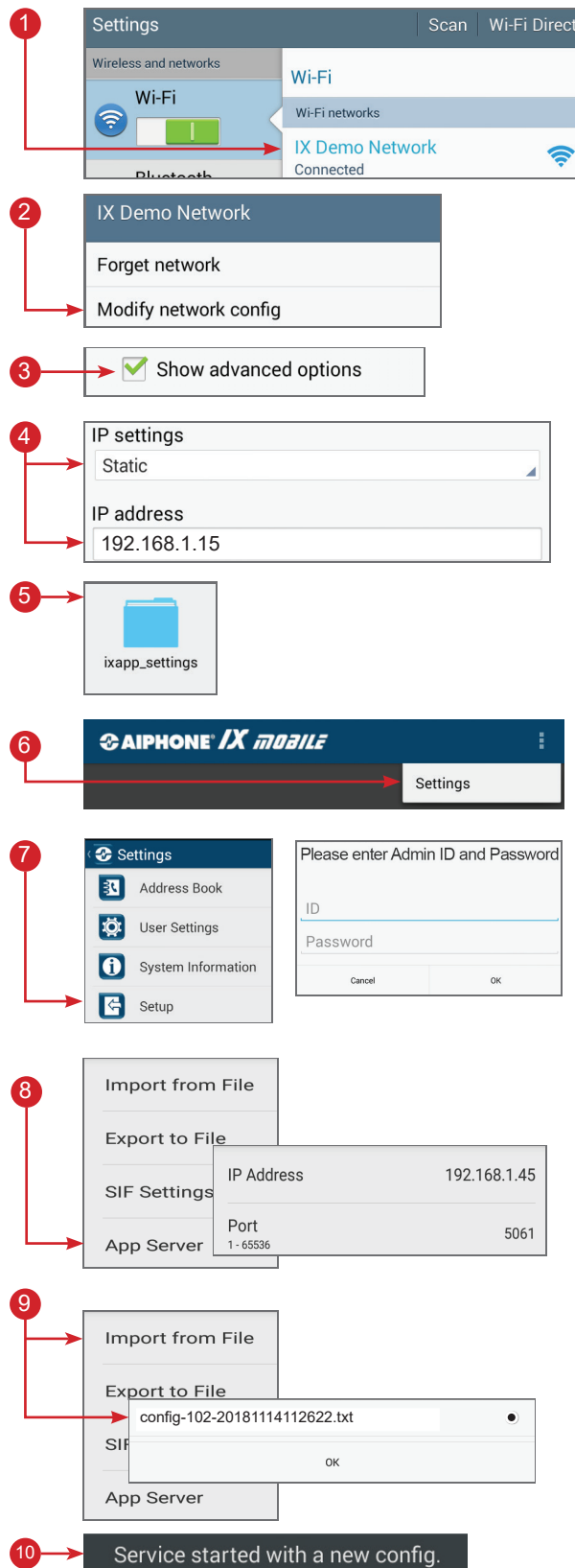
Download IX Mobile using [Google Play](#)™



- 1 Connect to the WiFi network associated with the IX Series system installation. Once connected, tap and hold on the connected network.
- 2 A pop-up will appear. Tap **Modify network config**.
- 3 Check the box beside **Show advanced options**.
- 4 Under **IP settings**, select **Static** and enter the *IP Address* that was assigned when configuring the app with the IX Support Tool. Once entered, tap **Save**.
- 5 Connect the mobile device to the PC used for programming the system. Using the PC, navigate to the mobile device and locate the **ixapp_settings** folder. Paste/transfer the configuration file saved from the IX Support Tool to this folder.
- 6 Launch the application on the mobile device. Tap the Menu icon, then tap **Settings**.
- 7 Tap **Setup**.
Enter the Admin ID and Password and tap **OK**.
Default ID: admin
Default Password: admin
- 8 Tap **App Server**. Enter the IP Address and Port Number for the App Server (RY-IP44). Refer to page 11 for information on setting up the App Server.
- 9 Tap **Import from File**.
Select the configuration file that was transferred to this device in Step 5. Tap **OK**.
- 10 A pop-up will appear stating “**Service started with a new config.**”
- 11 To unlock the app, call the mobile device from a master station in the system.

Note: On Android devices running version 7.0 or newer, battery optimization must be disabled for the IX Mobile app to maintain network connection.

Android, Google Play, and the Google Play logo are trademarks of Google Inc.



RY-IP44 Dimensions



Mounting:

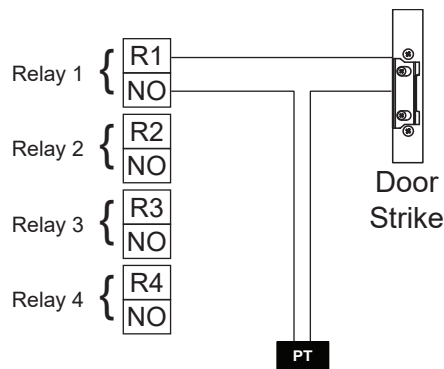
The RY-IP44 adaptor mounts to an Aiphone W-DIN11 mounting rail (sold separately).

RY-IP44 Wiring

PT = Power Transformer (use proper power for the strike, mag lock, or external signaling device being used).

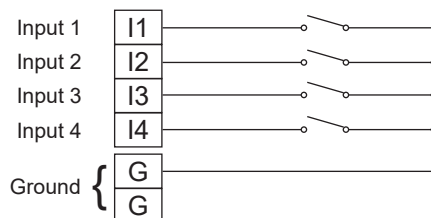
Relay contact rating: 30V DC, 0.5A.

Door release:

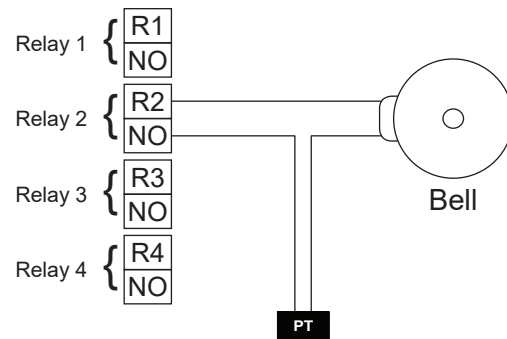


Inputs:

Connect a normally open (N/O) contact across any input and ground.

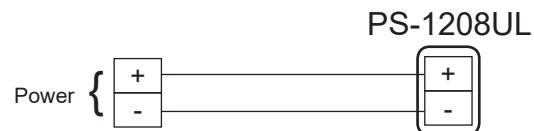


External signaling:



Power:

Use a 9-30V DC (300mA @ 12VDC) power supply to power the RY-IP44 adaptor. Use the Aiphone PS-1208UL power supply (sold separately).



FCC WARNING:

This device complies with Part 15 of the FCC rules.

Operation is subject to the following two conditions:

- (1) This device may not cause harmful interference.
- (2) This device must accept any interference that may cause undesired operation.
 - For proper regulatory compliance, the drain wire should be disconnected at the power supply end of the cable.
 - Changes or modifications not expressly approved by the party responsible for compliance could void the user's authority to operate the equipment.