

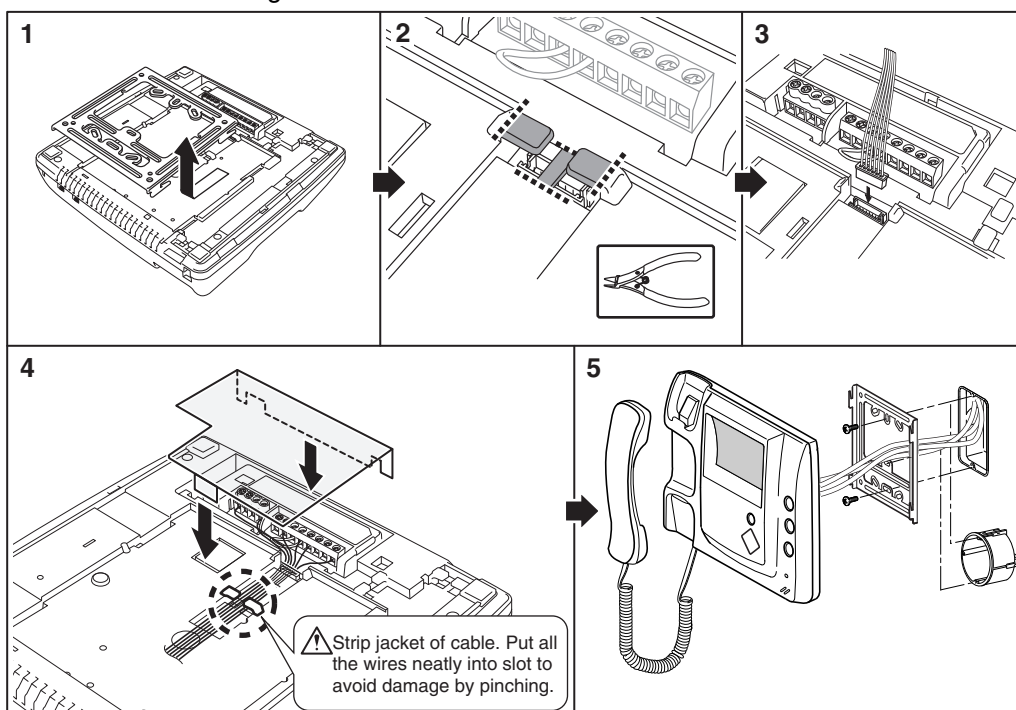
6-PIN CONNECTOR

for Optional Functions

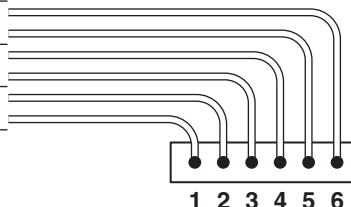
MOUNTING INSTRUCTIONS

■ MOUNTING

1. Take the mounting bracket off of the monitor unit.
2. Cut out the cable knock-out, as shown by the dotted lines.
3. Plug the 6-pin connector into slot.
4. Connect the wires to the terminal block. Attach the protection shield.
5. Attach the mounting bracket to a box. Mount the monitor unit onto the bracket.



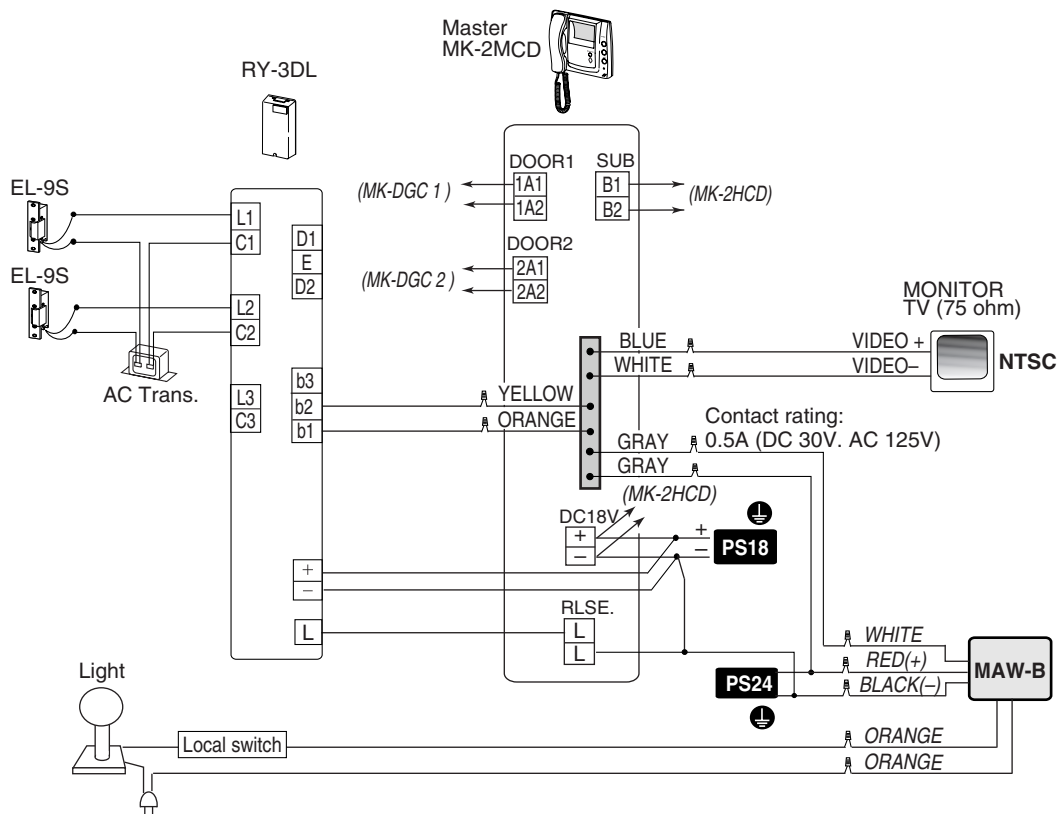
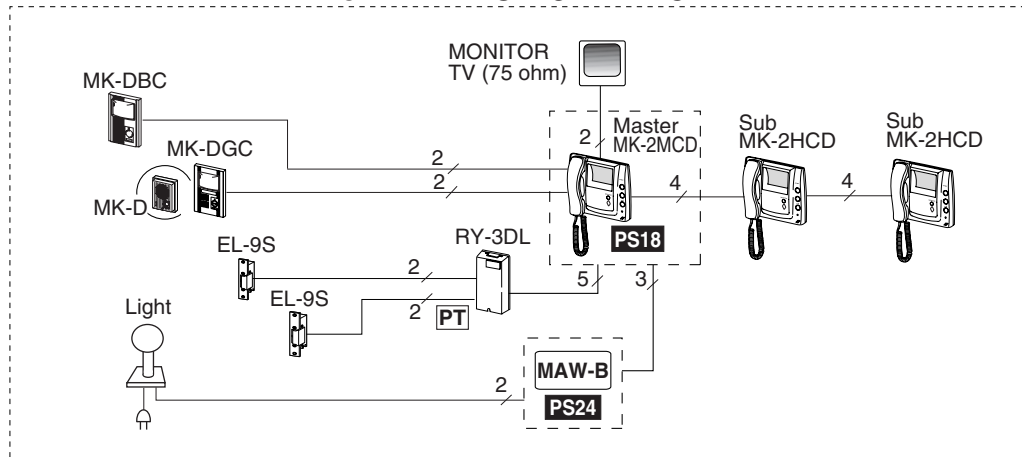
FOR MODELS	FUNCTION	(WIRE)
MK-1GD, MK-1HD, MK-2MCD, MK-2HCD	{ Ext. device control porch light, etc.	{ (Gray) (Gray)
MK-2MCD	{ b1*RY-3DL b2*RY-3DL	{ (Orange) (Yellow)
MK-1GD, MK-2MCD	{ VIDEO - VIDEO +	{ (White) (Blue)



AIPHONE CO., LTD., NAGOYA, JAPAN
AIPHONE CORPORATION, BELLEVUE, WA, USA
AIPHONE EUROPE N.V., ANTWERP, BELGIUM

 **AIPHONE**[®]
Providing Peace of Mind
<http://www.aiphone.com/>
Printed in Thailand

6PIN CONNECT OR WIRING DIAGRAM for MK-2MCD & MK-1GD



NOTE: YELLOW & ORANGE wire provides selective door release control with RY-3DL adaptor. Works for MK-2MCD only.

PS18 : PS-1820DIN, PS-1820S, PS-1820UL (2A) **PS24** : 24V DC power supply for MAW-B or Relay locally available.