

IX Series

Informacast Integration®

General Overview

This document covers the process that will allow the IX Series to receive audio alerts from the InformaCast® system using the Singlewire® software client and a dedicated master station (see IX Series Master Stations listed below). The modification allows a master station to accept incoming audio alerts from the Singlewire® software client and broadcast those alerts to all IX stations in its address book. The master station will be unable to operate as a normal station. It will not be able to perform any other function, such as place and receive calls. The master station can be added to a new or existing IX Series system by updating the firmware from 5.60 or better to 9.0.

Requirements

IX Series Master Stations: IX-MV7-B, IX-MV7-HB, IX-MV7-W, or IX-MV7-HW firmware version 5.60 or later

Addressing: Hostname, IPv4 (*default*), IPv6 / Static (*default*), DHCP

Multicast Address: IPv4 - (224.0.0.0-239.255.255.254), IPv6 - (FF10::0-FF1F:FFFF:FFFF:FFFF:FFFF:FFFF:FFFF:FFFF)

Singlewire® Software: Version 12.19.2 or better

Contents

Support Tool Configuration

Page 2	Adding InformaCast® Adaptor
Page 3	Station Details and Association
Page 4	Firmware Update
Page 4	Multicast Address
Page 5	Uploading Settings

Singlewire Configuration

Page 6	Multicast Groups
Page 6	Device Groups
Page 7	Message Templates

Getting Started

Proceed with the following steps only once the initial programming of the IX Series system and its stations have been completed. Launch Support tool, and login using the information below. From the File(F) menu Select Existing System if it is not already loaded.

ID

Password

Default Login Information

ID: admin
Password: admin

Adding InformaCast® Adaptor

Connect the master station that is to be used as the adaptor to the network and wait till it is fully booted up (solid status LED). In Support Tool, click on **Tools** and select **System Configuration**, then click **Add New Station**. Use the drop down by **Station Type** to select IX-MV7-* and type 1 in the **Station(s)** field, then press **Add**. Change the name of the device to "InformaCast Adaptor" and change the station number if desired.

[System Name:InformaCast]

Tools(T) Help(H)

- Station Search
- Association Settings
- Station Replacement
- Restore System Settings
- System Configuration**

System Configuration

1. Select the setting file to be linked with the chosen station:

Station Settings List							
Select	Number	Name	Location	Station Type	Host/ IP Address	Subnet Mask	Associated
<input type="radio"/>	0001	Reception IX-MV7		IX-MV7-*	192.168.30.35	255.255.255.0	Yes
<input type="radio"/>	0002	Admin IX-MV7		IX-MV7-*	192.168.30.33	255.255.255.0	Yes
<input type="radio"/>	0003	IX-DV		IX-DV, IX-DVF(-)	192.168.30.36	255.255.255.0	Yes

Advanced Settings

System Management

Add New Station

Select Station Type and enter the number of stations, then click "Add".
 Up to 50 stations can be added at a time.

Station Type: Station(s):

Station Information			
Number	Name	Location	Station Type
0004	InformaCast Adaptor		IX-MV7-*

Click **OK** to add the station.

Setting InformaCast® Adaptor Details

On the System Configuration screen, click **Station Details** in the Advanced Settings section. A pop-up window will appear. In the Station Details pop up window, enter the IP Address and Subnet Mask for the new station. When done click **OK**.

#	Station Information				Network Settings												
	Identification				IP Address								Default Ga				
	Number	Name	Location	Station Type	Host	IP Version	Static / DHCP	IP Address				Subnet Mask				Default Ga	
								1	2	3	4	1	2	3	4	1	2
0001	0001	Reception IX-MV7		IX-MV7-*		IPv4	Static	192	168	30	35	255	255	255	0		
0002	0002	Admin IX-MV7		IX-MV7-*		IPv4	Static	192	168	30	33	255	255	255	0		
0003	0003	IX-DV		IX-DV, IX-DVF(-*)		IPv4	Static	192	168	30	36	255	255	255	0		
0004	0004	InformaCast Adaptor		IX-MV7-*		IPv4	Static	192	168	30	37	255	255	255	0		

Click **OK** to add the station. **OK**

Associating the Name and IP Address of the InformaCast® Adaptor

To associate the InformaCast® Adaptor to its IP Address and Name, check the radial button for the Informacast® Adaptor in the Station Settings List and the corresponding listing in the Station List. Click **Apply** to associate the station, and verify the association by checking the Associated Stations List at the bottom of the page. The InformaCast® Adaptor will reboot.

Select	Number	Name	Location	Station Type	Hostname	IP Address	Associated
<input type="radio"/>	0001	Reception IX-MV7		IX-MV7-*		192.168.1.50	-
<input type="radio"/>	0002	Admin IX-MV7		IX-MV7-*		192.168.1.51	-
<input type="radio"/>	0003	IX-DV		IX-DV, IX-DVF(-*)		192.168.1.52	-
<input type="radio"/>	0004	IX-RS		IX-RS-*		192.168.1.53	-
<input checked="" type="radio"/>	0005	InformaCast Adaptor		IX-MV7-*		192.168.1.54	-

Select	Number	Name	Location	Station Type	IP Address	Subnet Mask	MAC address	Associated
<input checked="" type="radio"/>				IX-MV7-*	192.168.1.160	255.255.255.0	00:0B-AA:2F:27:CE	-

Click **Apply** to associate the station. **Apply**

For more details about the features and information above, please contact Technical Support.

Associating the Name and IP address of the InformaCast® Adaptor (Continued)

Click **Next** to exit the System Configuration window. In the Setting File Upload window, click **Finish**.

Associated Stations List								
Select	Number	Name	Location	Station Type	IP Address	Subnet Mask	MAC address	Status
<input type="checkbox"/>	0001	Reception IX-MV7		IX-MV7-*	192.168.30.35	255.255.255.0	00:0B:AA:2F:01:FE	Success
<input type="checkbox"/>	0002	Admin IX-MV7		IX-MV7-*	192.168.30.33	255.255.255.0	00:0B:AA:30:04:50	Success
<input type="checkbox"/>	0003	IX-DV		IX-DV, IX-DVF(-*)	192.168.30.36	255.255.255.0	00:0B:AA:27:08:3B	Success
<input type="checkbox"/>	0004	InformaCast Adaptor		IX-MV7-*	192.168.30.37	255.255.255.0	00:0B:AA:2F:0D:8D	Success

Buttons: Remove Association, Retry Association, Back, **Next**, Cancel

Update Firmware

Expand Maintenance, and click Firmware Update.

Click **Browse** and direct the software to the IXMV7_V900.bin firmware file. Select only the InformaCast® Adaptor and click **Update**. A pop-up will indicate that the update process was successful, with "Success" being displayed in the Status column. The InformaCast® Adaptor will reboot at this time.

- Station Information
- Network Settings
- System Information
- Call Settings
- Option Input / Relay Output Setti
- Paging Settings
- Function Settings
- Transfer Settings
- Station Settings
- Maintenance
 - Firmware Update**
 - Initialization
 - Settings File Backup
 - syslog

Update Firmware

Select Firmware files:
 IX-MV7-* C:\Users\paul\Desktop\IX-MV7_V900.bin **Browse**

Select Station(s) to update:
To check the current firmware version, go to "Tool -> Station Search".

Station List						Text in red are required settings.
Select	Number	Name	Location	Station Type	Status	
<input type="checkbox"/>	0001	Reception IX-MV7		IX-MV7-*	-	
<input type="checkbox"/>	0002	Admin IX-MV7		IX-MV7-*	-	
<input type="checkbox"/>	0003	IX-DV		IX-DV, IX-DVF(-*)	-	
<input checked="" type="checkbox"/>	0004	InformaCast Adaptor		IX-MV7-*	-	

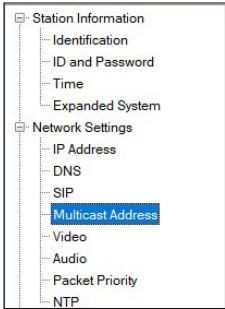
Select Station by Type:
 All Select Unselect

Update

i If the InformaCast® adaptor is using firmware older than 5.00, it will need to be updated. Use the Firmware Upgrade Tool, found at <https://www.aiphone.com/home/products/ix-series>

Multicast Address

Multicast is used by the InformaCast® Adaptor to send out the InformaCast® broadcast to the IX Series hardware. Expand Network Settings and click **Multicast Address**, then fill in the multicast address line for the IX-MV7-* InformaCast® Adaptor.



Station Information					Network Settings						
#	Identification				Multicast Address						
	Number	Name	Location	Station Type	Master Station: For Call / Paging, Video Door Station: For Call						
					IPv4				IPv6		
	1	2	3	4							
0001	0001	Reception IX-MV7		IX-MV7-*							
0002	0002	Admin IX-MV7		IX-MV7-*							
0003	0003	IX-DV		IX-DV, IX-DVF(-*)							
0005	0005	InformaCast Adaptor		IX-MV7-*	239	0	1	15			

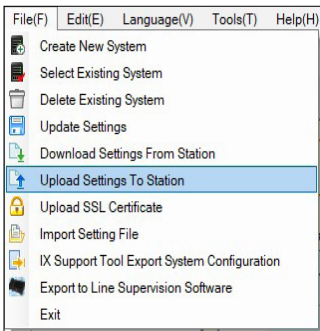


Please consult with the network admin for correct multicast address to use.

Click **Update** to save your settings.

Upload Settings to Station

Click on File and select Upload Settings to Station. Check only the InformaCast® Adaptor and click **Settings**, then **OK** when prompted. Verify the upload shows Success in the Status column once it is complete.



Setting File Upload

Select the station(s) to upload the Setting File(s):

Station List						Text in red are required settings.
Select	Number	Name	Location	Station Type	Status	
<input type="checkbox"/>	0001	Reception IX-MV7		IX-MV7-*	-	
<input type="checkbox"/>	0002	Admin IX-MV7		IX-MV7-*	-	
<input type="checkbox"/>	0003	IX-DV		IX-DV, IX-DVF(-*)	-	
<input checked="" type="checkbox"/>	0004	InformaCast Adaptor		IX-MV7-*	-	

Select Station by Type:

Select file type to be uploaded

Settings

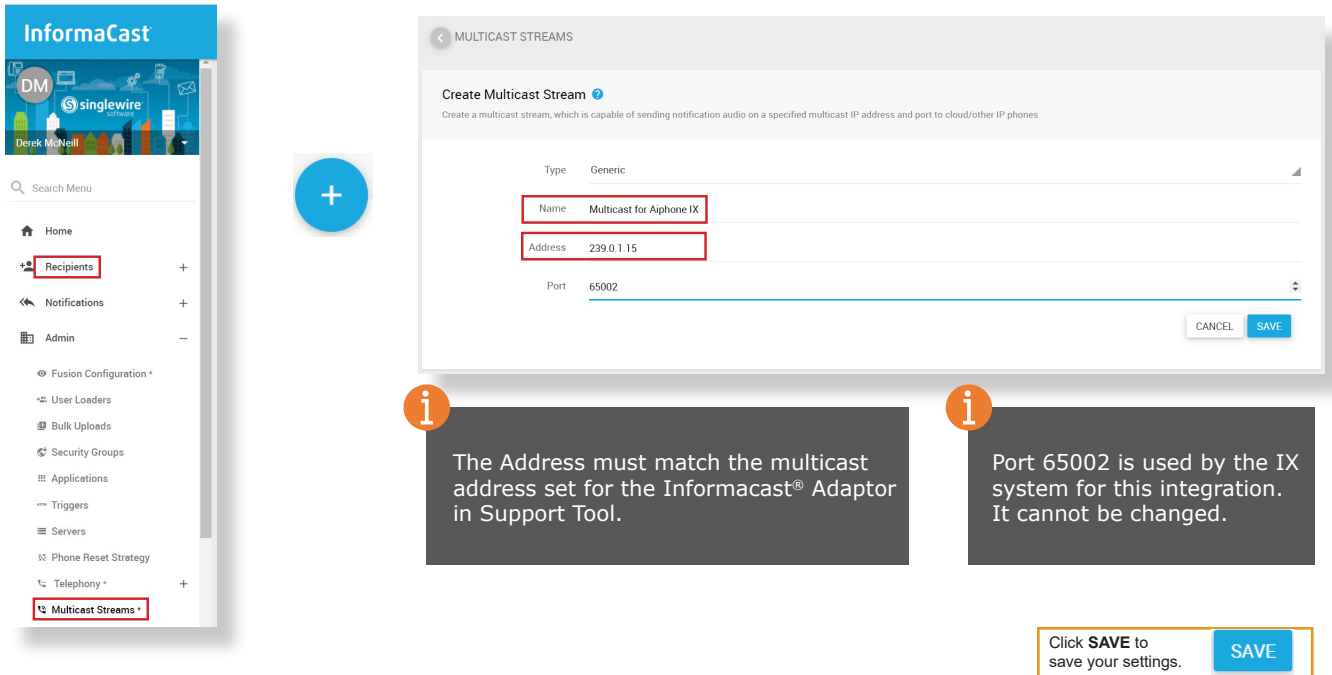
Sounds

Image

Schedule

Singlewire® - Multicast Stream

Log into the Singlewire® client that is responsible for the InformaCast® system. On the side menu, expand the Admin section and select Multicast Streams. Press the **+** button to open up the Create Multicast Stream window and fill in the Address and Port fields. This Multicast address will be used by the Singlewire® system to communicate with the Informacast® Adaptor.

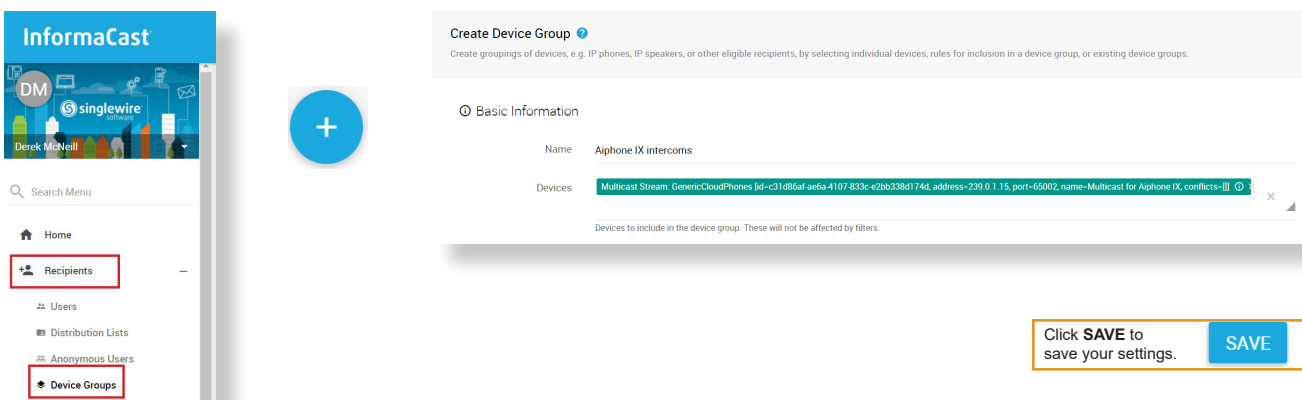


The screenshot shows the InformaCast Admin interface. On the left is a side menu with 'Multicast Streams' highlighted. A blue '+' button is shown next to the 'Create Multicast Stream' form. The form has the following fields: Type (Generic), Name (Multicast for Aiphone IX), Address (239.0.1.15), and Port (65002). There are 'CANCEL' and 'SAVE' buttons at the bottom right. Two information boxes provide additional context: 'The Address must match the multicast address set for the Informacast® Adaptor in Support Tool.' and 'Port 65002 is used by the IX system for this integration. It cannot be changed.'

Click **SAVE** to save your settings. **SAVE**

Singlewire® - Device Group



On the side menu, expand Recipients and select Device Groups. In the Device Groups window, press the **+** button to open the Create Device Group window. Type in a name for the new group and direct it to the Multicast stream created in the previous step in the Devices field.

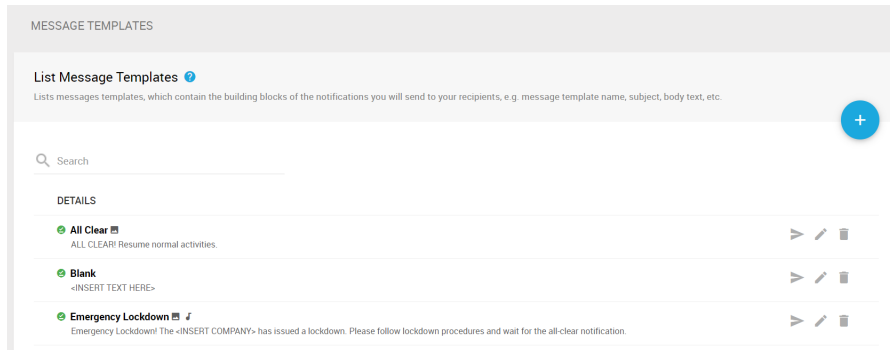
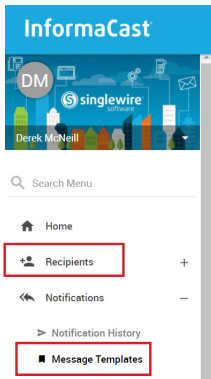


The screenshot shows the InformaCast Admin interface. On the left is a side menu with 'Device Groups' highlighted. A blue '+' button is shown next to the 'Create Device Group' form. The form has the following fields: Name (Aiphone IX intercoms), Devices (Multicast Stream: GenericCloudPhones [id=c1d86afae6a-4107-823c-e2b6338d174d, address=239.0.1.15, port=65002, name=Multicast for Aiphone IX, conflicts=]), and a field for 'Devices to include in the device group. These will not be affected by filters.' There are 'CANCEL' and 'SAVE' buttons at the bottom right. A callout box says 'Click SAVE to save your settings.'

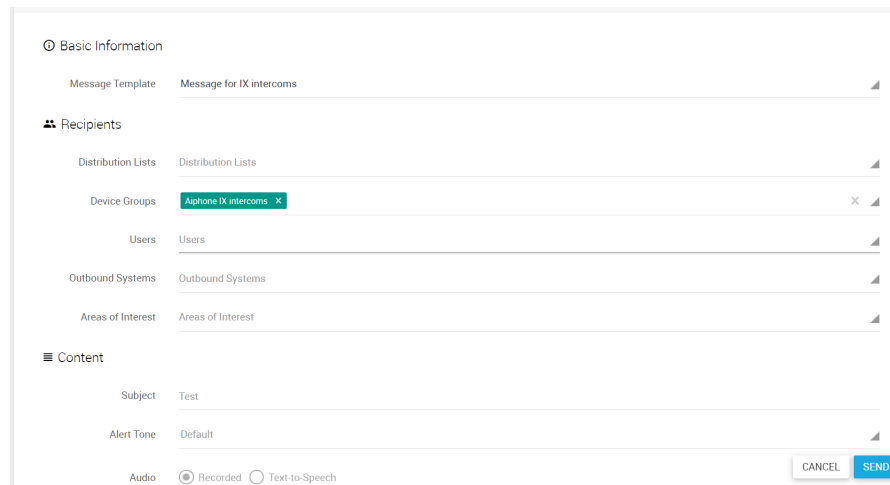
Click **SAVE** to save your settings. **SAVE**

Singlewire® - Message Templates

On the side menu, expand the Notifications and select Message Templates. Press the  button to create a new Message Template, or press the  button by an existing Message Template. Add the IX intercoms group created in the previous step to the Device Groups listed under the Recipients section.



or



Click **SAVE** to save your settings.

