

## IX Series

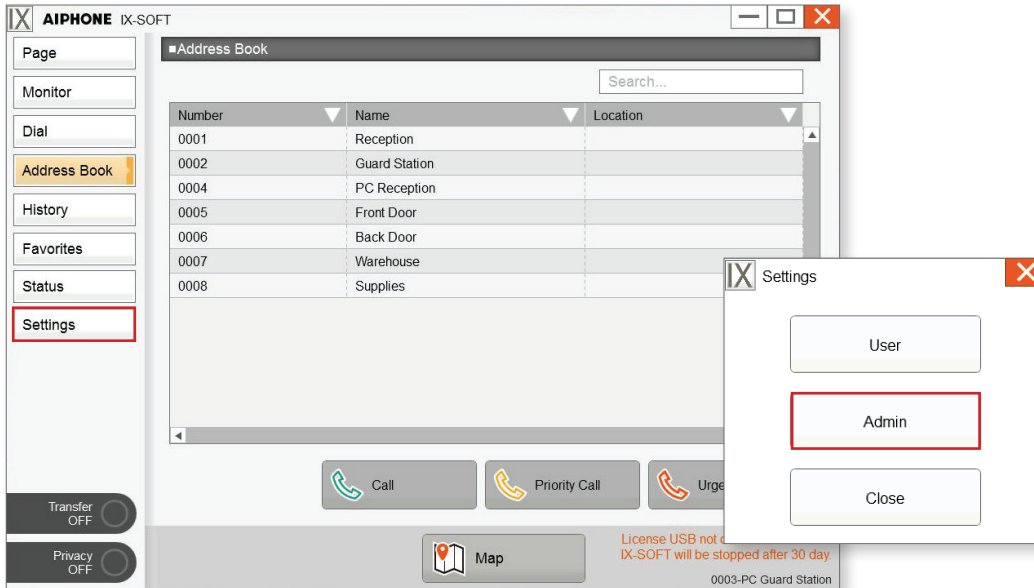
### IX-SOFT Map Setting Guide

#### Getting Started

This guide covers the basic map settings for IX-SOFT and assumes all other programming is completed with basic call functionality. Refer to the IX Quick Start Guide for initial system programming.

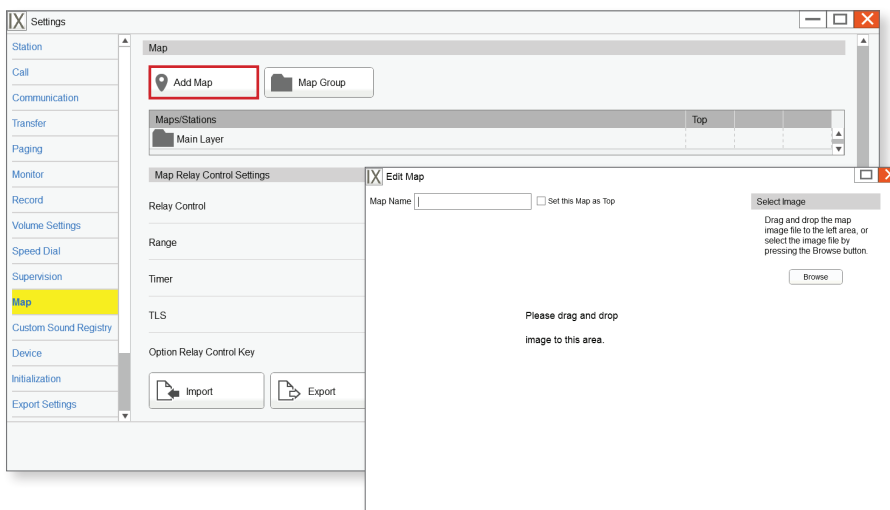
#### Admin Settings

On the side menu, click **Settings**. Select **Admin** and enter the Admin ID and Password set in the Support Tool. Click **OK**.



#### Adding a Map

Select **Map** from the side menu, and click **Add Map**. Drag and drop the map image file into the new window or browse to the location of the file using **Browse**.

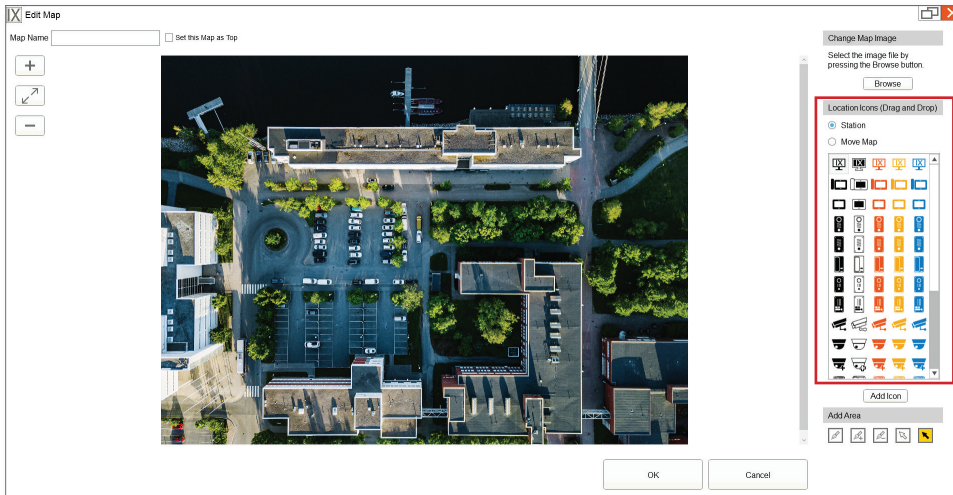


#### Map Image Supported Files

File format: BMP, PNG, GIF, JPEG, TIFF  
Resolution: 3000 (W) × 2000 (H) or less

## Map Configuration

Drag and drop the location icons to add IX Series stations to the map. Once an icon has been dropped onto the map, assign a station to the corresponding icon and click **OK**. Once the map has been customized, enter a **Map Name** and click **OK** to save changes.

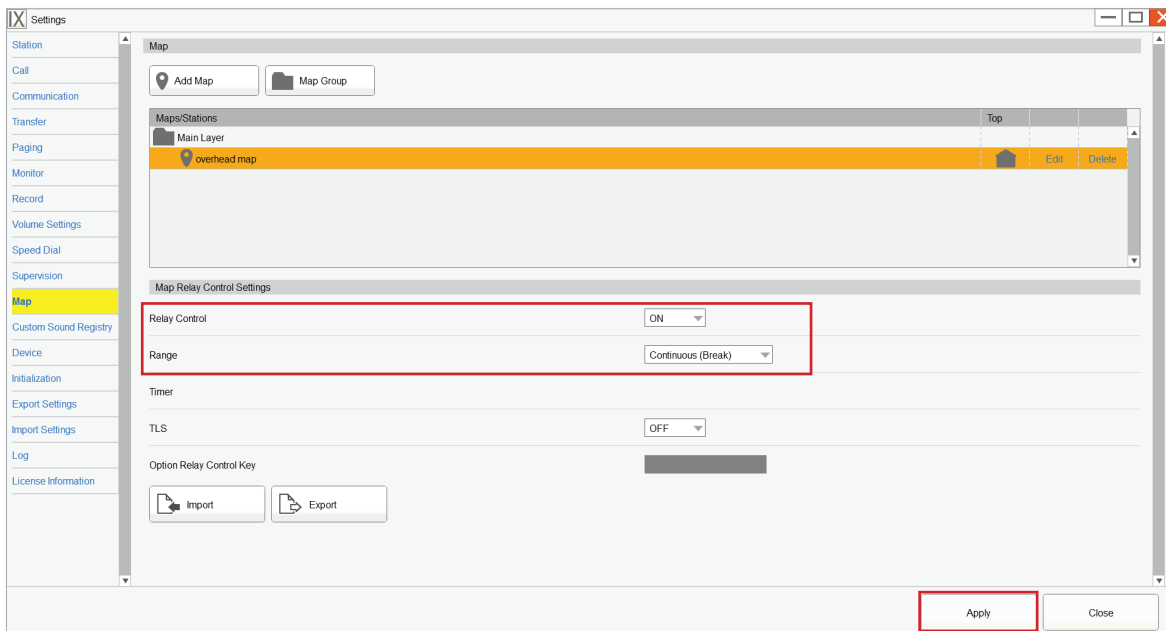


### Custom Icon Supported Files

File format: BMP, PNG, GIF, JPEG, TIFF  
Resolution: 700 (W) × 700 (H) or less

## Map Relay Control

To enable the ability to trigger the relay output on a station using the map feature of IX-SOFT, the **Relay Control** drop-down must be set to **ON**. Click **Apply** to save changes.



## Enabling SIF

To view real time events on the map, SIF must be enabled for IX-SOFT, as well as the stations communicating with it. Select **Station** from the side menu and use the **SIF Connection** drop-down to select **Socket**. Click **Apply** to save changes.

The screenshot shows the 'IX Settings' window with the 'Station' tab selected. On the left is a sidebar menu with options like Call, Communication, Transfer, Paging, Monitor, Record, Volume Settings, Speed Dial, Supervision, Map, Custom Sound Registry, Device, Initialization, Export Settings, Import Settings, Log, and License Information. The main area shows settings for the selected station. The 'SIF Connection' dropdown is set to 'Socket', 'SSL' is set to 'Enable', and 'Port' is '10000'. A red box highlights these three settings. At the bottom right, the 'Apply' button is highlighted with a red box.

## Enabling SIF (for IX Series Stations)

The SIF settings will also need to be enabled for each station communicating with IX-SOFT. To do this, open IX Support Tool and select the system associated with IX-SOFT. On the left side menu, expand **Function Settings** and select **SIF**. This screen will allow each station's SIF settings to be enabled. Enable **SIF Functionality** and fill out the **Program Type**, **IPv4 Address** of IX-SOFT, **Destination Port**, **SSL**, and **Connection**. For multiple instances of IX-SOFT, use the Display drop-down at the top of the screen and select the next available number.

**Table View**

**Station View**

- Station Information
- Network Settings
- System Information
- Call Settings
- Option Input / Relay Output Settings
- Paging Settings
- Function Settings**
  - Door Release
  - Network Camera Integration
  - Paging Settings
  - Bathroom Call
  - Email
  - CGI
  - SIF**
  - Record
  - Communication Audio Message

Station Information				Function Settings								
#	Identification			SIF								
	Number	Name	Location	Station Type	SIF Functionality	SIP URI Format	No.01					
							SIF Settings					
						Program Type	IPv4	IPv6	Destination Port	SSL	Connection	
0001	0001	Reception		IX-MV7-*	Enable	Disable	1111	192.168.1.16		10000	Enable	Socket
0002	0002	Guard Station		IX-MV7-*	Enable	Disable	1111	192.168.1.16		10000	Enable	Socket
0003	0004	PC Reception		IX-SOFT	Enable	Disable	1111	192.168.1.16		10000	Enable	Socket
0004	0005	Front Door		IX-DV, IX-DVF(-)	Enable	Disable	1111	192.168.1.16		10000	Enable	Socket
0005	0006	Back Door		IX-DV, IX-DVF(-)	Enable	Disable	1111	192.168.1.16		10000	Enable	Socket
0006	0007	Warehouse		IX-SSA(-)	Enable	Disable	1111	192.168.1.16		10000	Enable	Socket
0007	0008	Supplies		IX-RS-*	Enable	Disable	1111	192.168.1.16		10000	Enable	Socket

**Each station will also need a number of transmission triggers enabled.**

Triggers to be enabled: "Begin Outgoing Call," "Begin Communication (Source)," "End Communication," "Change Contact," "End Outgoing Call," "Begin Incoming Call," "End Incoming Call," "Begin Communication (Destination)," "Failed Line Supervision," "Failed Device Check."

**Program Type**

Set a four digit binary number for Program Type with the exception of "0000," "0001," "0011."

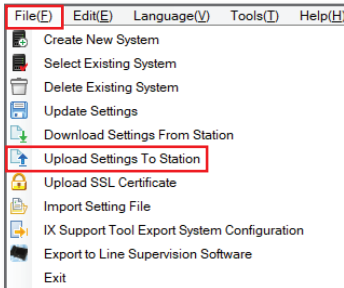
**SSL**

The SSL setting in Support Tool must match the SSL setting in IX-SOFT.

Click **Update** to save the changes.

## Setting File Upload

Changes made in the previous steps will need to be uploaded to the IX Series stations to take effect. In the top menu, click on **File(F)** and select **Upload Settings to Station**. Select the stations to upload to or choose All in the **Select Station by Type** drop-down menu and click **Select**, then click **Settings** to begin the upload.



The 'Setting File Upload' dialog box contains the following elements:

- Select the station(s) to upload the Setting File(s):** A section with a 'Station List' table.
- Station List Table:**

Select	Number	Name	Location	Station Type	Status
<input type="checkbox"/>	2001	IX-DV	Panel 5	IX-DV, IX-DVF(-*)	-
<input type="checkbox"/>	2002	IX-NVP	Panel 5	IX-SS-2G	-
<input type="checkbox"/>	2003	IX-NVP2	Panel 5	IX-SS-2G	-
<input type="checkbox"/>	3001	IX-DVM	Panel 2	IX-DVM	-
<input type="checkbox"/>	3002	IX-EA	Panel 2	IX-EA, IX-EAU	-
<input type="checkbox"/>	3003	IX-DVF HW	Panel 2	IX-DV, IX-DVF(-*)	-
<input type="checkbox"/>	4001	IX-DVF-2RA	Panel 1	IX-DV, IX-DVF(-*)	-
<input type="checkbox"/>	5001	Desk Master	Table	IX-MV7-*	-
<input type="checkbox"/>	5002	PC Master Station	Table	IX-SOFT	-
<input type="checkbox"/>	9999	IXWMA /2		IXW-MA	-
- Select Station by Type:** A dropdown menu set to 'All', with 'Select' and 'Unselect' buttons.
- Select file type to be uploaded:** Three buttons: 'Settings' (highlighted with a red box), 'Sounds', and 'Image'.

## Setting File Export

When programming is finished, it is recommended that the configuration be exported for back up purposes. From the top menu bar, click **File(F)** and select **IX Support Tool Export System Configuration**. Click **Export** to designate a location on the PC to save the configuration to, then click **Finish**.

The 'Export Settings' dialog box contains the following elements:

- Export Settings** title bar.
- Text: 'The system has been successfully configured. Aiphone recommends to export and back up the system configuration files and leave them on-site with the end user. This backup can be imported into the IX Support Tool and used to modify the system.'
- Export** button (highlighted with a red box).
- Finish** button (highlighted with a red box).

### Configuration File

The exported configuration file should be left on site in a flash drive or a designated PC.