

Configuring External Signaling

Introduction

IX Series stations offer relay outputs that can be used for external signaling when certain trigger conditions are met. This is commonly used to activate external devices such as sounders, access control systems, and security systems. This guide covers how to configure the outputs both for direct connection and when using an IXW-MA or IXW-MAA IP relay adaptor.

Compatible Station Types

IX-DV and IX-SSA stations offer two outputs, which allows the stations to provide outputs for door release and external signaling.

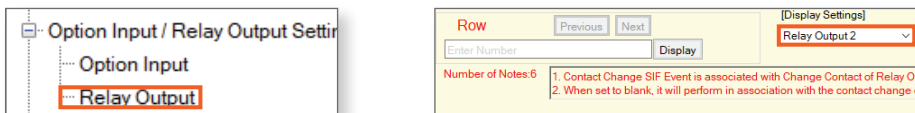
IX-RS, IX-EA, IX-DVM, and IX-SS-2G stations only have a single output available, which means that the stations cannot be used for external signaling and door release outputs at the same time.

IX-MV7 master stations offer two outputs that can both be configured for external signaling.

The settings in this guide are not available for legacy IX-MV, IX-DA, IX-BA, IX-1AS, or IX-10AS stations. They are also not available if using the legacy RY-IP44 IP relay adaptor.

Configuration Steps

Navigate to **Option Input / Relay Output Settings**, **Relay Output**. By default, the **Display Settings** will be set to **Relay Output 1**. Use the drop-down under **Display Settings** to change to **Relay Output 2**, if needed.



For each station to be configured, use the drop-down to change the **Function** to **Status Output**. Choose the desired trigger conditions for each station.

Station Information					Option Input / Relay Output Settings								
#	Identification				Relay Output								
	Number	Name	Location	Station Type	Relay Output 2			Status Output 2					
					Name	Function		Outgoing Call			Incoming Call		
								Normal	Priority	Urgent	Normal	Priority	Urgent
0001	0001	Master Station1		IX-MV7-*		Status Output		<input type="checkbox"/>	<input type="checkbox"/>	<input type="checkbox"/>	<input checked="" type="checkbox"/>	<input checked="" type="checkbox"/>	<input checked="" type="checkbox"/>
0002	0002	Master Station2		IX-MV				<input type="checkbox"/>	<input type="checkbox"/>	<input type="checkbox"/>	<input type="checkbox"/>	<input type="checkbox"/>	<input type="checkbox"/>
0004	0004	Video Station1		IX-DV, IX-DVF(-*)		Status Output		<input checked="" type="checkbox"/>	<input checked="" type="checkbox"/>	<input checked="" type="checkbox"/>	<input type="checkbox"/>	<input type="checkbox"/>	<input type="checkbox"/>

i Depending on the version of IX Support Tool used, **Relay Output 2** may already be set to **Status Output** for an incoming or outgoing call by default.

Choosing Trigger Conditions

There are several conditions that can be used to activate a relay output on a station. Multiple conditions can be active on a station at once. Not all conditions are available for all stations, and IX Support Tool will only display valid options for each station.

Outgoing Call: The station is calling out to another station.

Incoming Call: The station is receiving a call.

Communication: The call has been answered and the station is in an active call with another station.

Outgoing Page: The station has initiated a page.

Incoming Page: The station is receiving a page from another station.

Monitor: The station is being monitored by another station.

Normal/Priority/Urgent: These are call priority levels.

Applying Settings

Click **Update**. If an IP relay will not be used, navigate to **File**, **Upload Settings to Stations**, and upload settings to all stations.

IXW-MA and IXW-MAA Configuration

IXW-MA and IXW-MAA IP relay adaptors mirror programmed outputs on other stations. To use them for external signaling, first program a door or master station's output like on the previous page.

First, the other stations will need to be configured to signal the IP relay. Navigate to **Function Settings**, SIF.

Function Settings

- Door Release
- Network Camera Integrati
- Paging Settings
- Bathroom Call
- Email
- CGI
- SIF

Set the SIF settings for the mirrored station as follows:

- SIF Functionality: Enable
- Program Type: 0100
- IPv4: IP Address of the IXW-MA or IXW-MAA
- Destination Port: 65014
- SSL: Enable
- Connection: Socket

i Depending on the version of IX Support Tool used, some SIF settings may already be configured by default.

Function Settings							
SIF							
SIF Functionality	SIP URI Format	No.01					
		SIF Settings					
		Program Type	IPv4	IPv6	Destination Port	SSL	Connection
Enable	Disable	0100	Enter the IXW-MA IP address:		65014	Enable	Socket

Scroll right and check off **Change contact** for each door or master station. This does not need to be done for the IP relay.

Click **Update**.

No.01		
Transmission Trigger		
Door Release Indication	End Communication	Change contact
<input type="checkbox"/>	<input type="checkbox"/>	<input checked="" type="checkbox"/>

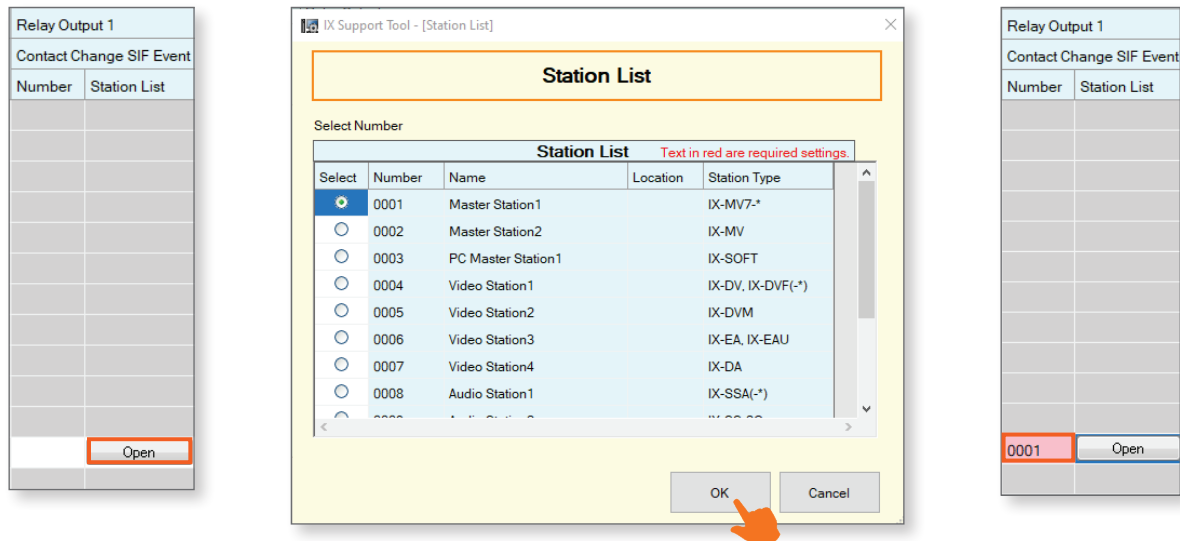
Next, the IP relay will need to be configured to receive the signals. Navigate to **Option Input / Relay Output Settings**, Relay Output. Use the drop-down to select the desired output on the IXW-MA. Set the **Function** on the IP relay to Contact Change SIF Event.

0014	0014	I/O Adaptor1	IXW-MA	Contact Change SIF Event
------	------	--------------	--------	--------------------------

IXW-MA and IXW-MAA Configuration (Continued)

Scroll right to **Contact Change SIF Event**. Click **Open**.

Click **Update**. Repeat these steps for all contacts on the IP relay that will mirror another station.



Changing the IP Relay's Name

If the IP relay needs to mirror relay output 2 on another station, the IP relay's name will need to be changed. This is because by default, the IP relay assumes that Relay Output 1 is being used when it receives a SIF signal from the other station.

Navigate to **Station Information, Identification**. Find the IP relay and add a "/" to its name. Then, use numbers separated by periods to indicate which of its programmed relays will respond to another station's secondary relay.

Example: A site has three door stations that trigger an IP relay when they place a call, which is being used to trigger a different chime for each. Relay output 1 on the door station is being used for door release, and the second relay is being used for external signaling. Relays 3, 4, and 5 on the IP Adaptor are connecting to the door chime system. So, the name of the output gets /3.4.5 added to it.

0014	0014	I/O Adaptor1 / 3.4.5	IXW-MA
------	------	----------------------	--------

Once the name is changed, Click **Update**. Navigate to **File, Upload Settings to Stations** and upload settings to all stations as normal.