

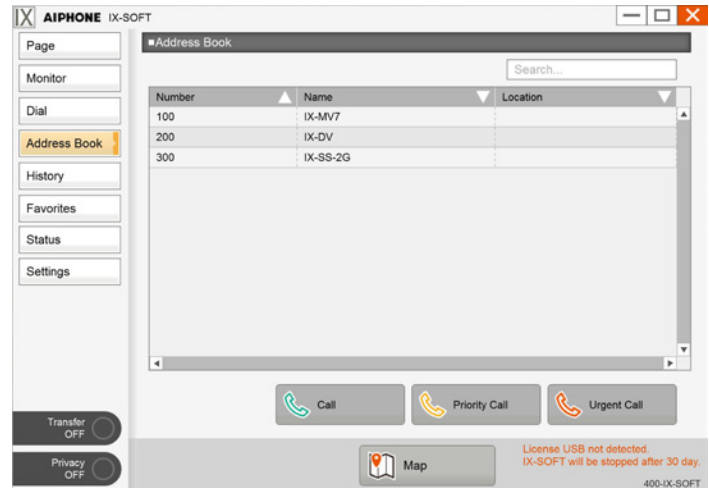
## IX-SOFT

### PC Answering Station Software

IX-SOFT is answering station software that can be used to call and communicate with IX|IXG Series stations across a network. It can also be used for monitoring, paging, and door release. The functionality and network status of each station can be verified with the Device Check and Line Supervision features.

The interactive map can be used to quickly interact with door and answering stations by selecting them individually or by dragging to select a group.

IX-SOFT requires a single, transferable lifetime license per PC, with bundles available in 1, 3, 5, or 10 licenses.



- Place and receive calls and pages
- Monitor door stations
- 50 programmable speed-dial buttons
- Call history
- Call transfer
- Interactive map
- Line Supervision
- Certified for use with Cisco Unified Call Manager®
- Certified for use with Acatel-Lucent's OmniPCX Enterprise™ (OXE) and OXO Connect™ platforms

<b>Video Codec</b>	H.264/AVC, motion JPEG	<b>Operating System</b>	Windows® 7 Professional, Windows® 7 Enterprise, Windows® 7 Ultimate
<b>Audio Codec</b>	G.711 (μ-law, A-law), G.722		Windows® 8.1, Windows® 8.1 Pro, Windows® 8.1 Enterprise
<b>Protocols</b>	IPv4, IPv6, TCP, UDP, SIP, HTTP, HTTPS, RTSP, RTP, RTCP, IGMP, MLD, SMTP, SFTP, DHCP, NTP, DNS		Windows® 10 Home, Windows® 10 Pro, Windows® 10 Enterprise, Windows® 10 Education
<b>Encryption</b>	TLS 1.2 (CRAM-MD5 for email)		Windows® 11 Home, Windows® 11 Pro, Windows® 11 Enterprise
<b>Packet Delivery</b>	Unicast or Multicast	<b>CPU</b>	32 bit (x86) processor or 64 bit (x64) processor, 2 GHz or higher
<b>Station Capacity</b>	499 stations max (9,998 max in expanded mode)	<b>Memory</b>	4 GB or higher
<b>Video Streaming</b>	ONVIF® Profile S	<b>Screen Resolution</b>	1280 x 768 or greater
		<b>Runtime</b>	.NET Framework 4.6.2 or later (Windows® 7 requires SP1) Microsoft Visual C++ Redistributable Package for Visual Studio 2017 or later