

IX|IXG Series

OnGuard® Physical Access Control System Integration

This guide explains how to integrate IX|IXG Series stations with the OnGuard® Physical Access Control System, referred as OnGuard going forward. This integration allows door release contacts and other status changes from IX|IXG Series stations to be mirrored and recorded by OnGuard. These instructions are intended for version 8.3 of OnGuard. The firmware must also be updated. See page 4 for more details.

These instructions assume that the IX|IXG Series stations have already been programmed using IXG Support Tool, and that a copy of the system's configuration is available.

IXG Support Tool can be downloaded from here: <https://www.aiphone.com/IXG-SupportTool>.

See this link for instructions on exporting and importing a configuration from another PC: <https://www.aiphone.com/ixg-export-import>.

For more programming instructions, see the IXG Series Quick Start Guide: <https://www.aiphone.com/IXG-Series-QuickStartGuide>.

IXG Support Tool Settings

Credentials & Network Information

Open IXG Support Tool. Fill in the credentials and click **Login** to sign in as an administrator.

Navigate to **Station Information**, ID/Password on the side menu. For each station that will integrate with OnGuard, record the ID(Administrator) and Password(Administrator).

Building Nu	Unit Number	Station Name	ID / Password	
			ID(Administrator)	Password(Admin
01	001	Video Door Station1	aiphone	*****
01	002	Video Door Station1	aiphone	*****
01	003	Master Station1	aiphone	*****

To see the station information, navigate to **Station Information**, Identification on the side menu. Record each stations' Station Number, Station Type, and Station Name.

To find the network information of the stations, navigate to **Network Settings**, IP Address on the side menu. Record the IP addresses.

Station Type	Station No.	Station Name
IXG-DM7(-*)	10000	Front Entrance
IX-MV7-*	104	Master Station1
IXG-2C7(-*)	105	Tenant Station1
IXG-MK	106	Guard Station1

Station Name	IP Address										
	Hostname	IP Version	Static / DHCP	IPv4 Address							
				IP Address				Subnet Mask			
				1	2	3	4	1	2	3	4
Front Entrance		IPv4	Static	192	168	1	10	255	255	255	0
Master Station1		IPv4	Static	192	168	1	11	255	255	255	0
Tenant Station1		IPv4	Static	192	168	1	12	255	255	255	0
Guard Station1		IPv4	Static	192	168	1	13	255	255	255	0

SIF & CGI Settings

To interact with OnGuard, the stations will need to send SIF signals to the software. Go to **View(V)**, Advanced on the top menu to reveal more options in the side menu. Navigate to **Function Settings**, SIF on the side menu. Use the settings below for each station that will be integrated with OnGuard. Click **Save**.

SIF Functionality	Enable
Program Type	0100
IPv4	IP Address of the PC or server running OnGuard
Destination Port	25000
SSL	Disable
Connection	Socket
Transmission Trigger	Check all boxes (ignore any that are greyed out)

Station Name	SIF Functionality	SIP URI Format	No.01							
			SIF Settings							
			Program Type	IPv4	IPv6	Destination Port	SSL	Connection		
Front Entrance	Enable	Disable	0100	192.168.1.105		25000	Disable	Socket		

Station Name	SIF						
	No.01						
	Transmission Trigger						
	Begin Out	Begin Cor	Door Rele	End Com	Change contact	Unit error	
Front Entrance	<input checked="" type="checkbox"/>	<input checked="" type="checkbox"/>	<input type="checkbox"/>	<input checked="" type="checkbox"/>	<input checked="" type="checkbox"/>	<input checked="" type="checkbox"/>	

i Use an IPv4 IP address. OnGuard integration does not support IPv6 addresses.

Navigate to **Function Settings**, CGI on the side menu. For each station, enable CGI. Click **Save**.

Building Nu	Unit Number	Station Name	CGI
			CGI Functionality
01	1000	Front Entrance	Enable
01	1001	Master Station1	Enable
01	1003	Guard Station1	Enable

Uploading Settings to Stations

Setting File Upload

Select the station(s) to upload the Setting File(s):

Select	Building Nu	Unit Number	Station Name	Station Type	Status
<input checked="" type="checkbox"/>	01	1000	Entrance Station1	IXG-DM7(-*)	-
<input checked="" type="checkbox"/>	01	1001	Tenant Station1	IXG-2C7(-*)	-
<input checked="" type="checkbox"/>	01	1002	Guard Station1	IXG-MK	-
<input checked="" type="checkbox"/>	01	1003	Master Station1	IX-MV7-*	-
<input checked="" type="checkbox"/>	01	1003	Video Door Station1	IX-EA,IX-EAU	-
<input checked="" type="checkbox"/>	01	1004	Video Door Station1	IX-DVM	-
<input checked="" type="checkbox"/>	01	1004	Video Door Station2	IX-DV,IX-DVF(-*)	-
<input checked="" type="checkbox"/>			Gateway Adaptor1	IXGW-(T)GW	-
<input checked="" type="checkbox"/>			I/O Adaptor1	IXW-MA	-

Select Station by Type.

All

Select

Unselect

Select file type to be uploaded.

Settings

Sounds

Images

Schedules

To upload settings to the stations, navigate to **Connection(S)**, Upload Settings on the top menu.

Select each station by placing a check mark next to it, or click **Select** to select all stations at once. Click **Settings** to upload station settings. After the upload, the stations will be operational.

Exporting the System Configuration

Once the Upload is complete, select **File(F)**, Export System Configuration from the top menu. Click **Export** to save as a backup. This will create a folder with the name of the configuration. **This entire folder is necessary to import the site information into IXG Support Tool.** If the configuration needs to be emailed, compress it first.

Updating Firmware

To integrate with the OnGuard software, the stations' firmware must be up to date. For stations with the prefix IXG-, answering stations must be version 4.00 or higher and entrance stations must be 4.83 or higher. For stations with the prefix IX-, answering stations must be 8.00 or higher and door stations must be 8.81 or higher.

To check the current firmware version of the stations, select **Connection(S)**, **Station Search** on the top menu. A station search will begin automatically. Click **Cancel** after 5 seconds. The current firmware version will be displayed to the right. If the firmware is up to date, record each station's firmware version for a later step.

The latest firmware updates can be found at <https://www.aiphone.com/kbtopic/firmware-ix-ixg>. For each station to be updated, download and extract the compressed file for that station.

Navigate to **Maintenance**, **Firmware Update** on the side menu. For each type of station to be updated, click **Browse** to locate the firmware package on the PC.

Select all stations that will have their firmware updated and click **Update**. This process will take several minutes, and the stations will reboot. Record each station's new firmware version for a later step.

Building No	Unit Number	Station Name	Station Type	IP Address	MAC Address	Firmware Version
		Entrance Station1	IXG-DM7(-)	192.168.1.25	00:0B:AA:41:05:83	2.93

Select	Building No	Unit Number	Station Name	Station Type	Status
<input type="checkbox"/>	01	1111	Tenant Station1	IXG-2C7(-)	-
<input type="checkbox"/>	01	1111	Video Door Station1	IX-DV/IX-DVF(-)	-
<input checked="" type="checkbox"/>	01	1112	Master Station1	IX-MV7*	-
<input type="checkbox"/>	01	1112	Video Door Station1	IX-DVDM	-
<input type="checkbox"/>	01	1113	Entrance Station1(Main)	IXG-DM7(-)	-

Update

Select Firmware files:

- IXG-2C7(-)
- IXG-DM7(-)(Main)
- IXG-DM7(-)(Sub)
- IXG-MK
- IXGW-(T)GW
- IXGW-LC
- IX-MV7*

i To update an IXG-DM7-HIDA's sub-firmware, the built-in card reader's Wiegand connection must be connected to an access control panel.


i Do not interrupt a firmware update once it has begun, including unplugging the station. Doing so can damage the station. A notification window will appear when all firmware updates are complete.

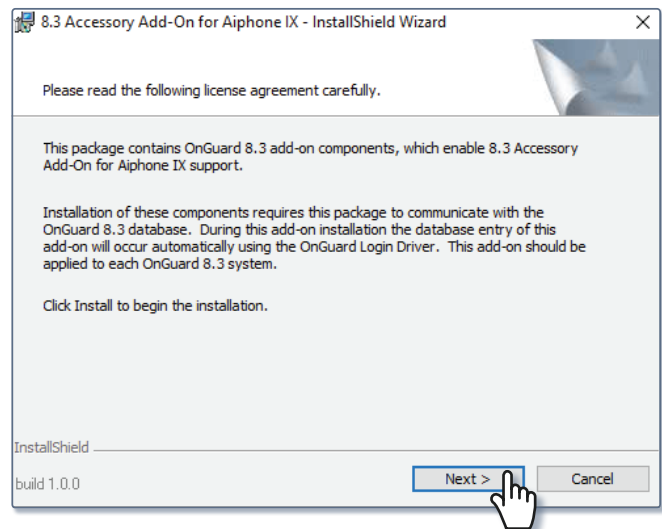
OnGuard Settings

Adding Aiphone Integration to OnGuard

OnGuard will provide a package, the Accessory Add-On for Aiphone IX. This allows OnGuard to interact with the intercoms. It will initially download as a 7-Zip package. Use a compatible program to extract it, and double click on the Setup file in the folder. Follow the prompts to install the add-on.

Name	Date modified
prerequisites	6/20/2025 12:08 PM
Add-On_ReadMe	6/20/2025 12:05 PM
setup	6/20/2025 12:08 PM
updatedatabase	6/20/2025 12:08 PM
updatedatabase.exe.config	2/28/2024 3:01 PM

 To enable the intercoms, contact your OnGuard VAR for the license for the Maximum Number of Intercom Exchanges (SWG-1340).



Preparing the Exchange File

Navigate to the folder where OnGuard is installed. By default, this will be the PC's C Drive under Program Files (x86). Locate the Exchange1.ini file from the top folder and double click it. The file will open in Notepad by default. Fill it out with the station information and credentials recorded in IXG Support Tool. Up to 128 stations can be included in each file.

```
Exchange1 - Notepad
File Edit Format View Help
[[StationList]
;Format:
;StationNumber, IpAddress, StationType, UserID, UserPass, SecureCGI, FirmVersion, CamOutput
1000, 10.2.2.19, Master, a, a, 1, 8.00, N/A ;Master
1001, 10.2.2.18, Master, a, a, 1, 8.00, Relay1 ;IX-RS
2001, 10.2.2.12, Video Door, a, a, 1, 8.81, Relay2 ;IX-EA
2000, 10.2.2.11, Video Door, a, a, 1, 8.00, Relay3 ;IX-DV
2002, 10.2.2.13, Video Door, a, a, 1, 8.81, Relay4 ;IX-DVM
2004, 10.2.2.15, Audio Door, a, a, 1, 8.00, Relay5 ;IX-SS-2G
2003, 10.2.2.14, Audio Door, a, a, 1, 8.81, Relay6 ;IX-SSA
3000, 10.2.2.10, Video Door, a, a, 1, 8.81, Relay7 ;IXG-DM7
```

These will not line up fully with the columns. They will go in the order of Station Number, IP Address, Station Type, User ID, User Password, Secure CGI, Firmware Version, and Cam Output. Enter the setting, separate with a comma, then add a space.

Most entries are entered exactly as they appear in IXG Support Tool. These are the exceptions.

The file does not differentiate between different models of station under Station Type. Instead, it categorizes them by function.

Type	Station Models
Master Station	IX-MV7-*, IX-RS-*, IX-SOFT
Video Door	IX-DV(F), IX-DVM, IX-EA, IXG-DM7-HID(A)
Audio Door	IX-SS-2G, IX-SSA-*

The User ID and Password are the administrator credentials recorded in earlier.

Put 1 for the Secure CGI setting. This is a true or false statement about whether port 443 or port 80 is being used. Use 1 for port 443, or 0 for port 80.

Camera Output is which relay on the OnGuard hardware the station will correspond with.

An additional label can be added at the end of the line by separating it with a semicolon. This can be used to label a station with its name or another identifier.

Once the information is filled out, select **File**, Save in Notepad.

Adding Stations to OnGuard

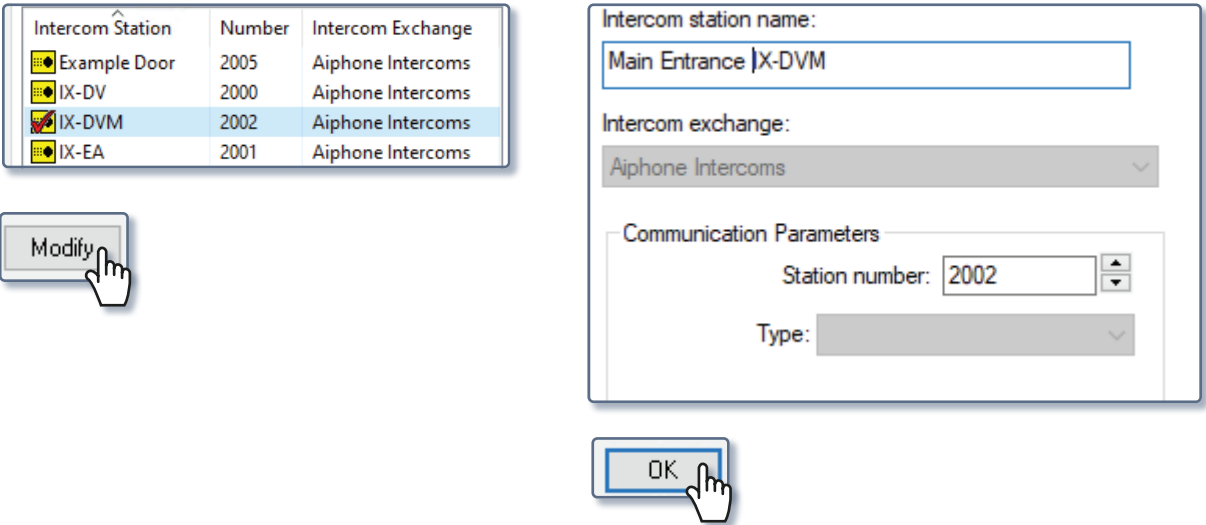
If OnGuard is not already running, open it. On the top menu, select **Additional Hardware**, Intercom Devices. This will display any IX|IXG Series stations that have already been added.

To configure a new station, click **Add**. Fill in the station name under Intercom Station Name. Use the drop-down menu under Intercom Exchange to select Aiphone Intercoms. Enter the station number, then click **OK**. It will appear in the list on the left.

The screenshot illustrates the process of adding a new station to the OnGuard system. It shows the 'Additional Hardware' menu with 'Intercom Devices...' selected. The 'Add' button is highlighted. The 'Intercom station name' dialog box is open, showing the 'Intercom station name' field with 'Example Door', the 'Intercom exchange' dropdown set to 'Aiphone Intercoms', and the 'Communication Parameters' section with 'Station number' set to '2005' and 'Type' set to 'IX-DV'. The 'OK' button is highlighted. The resulting list of stations is shown on the right, with 'Example Door' and 'IX-DV' added to the list.

Intercom Station	Number	Intercom Exchange
Example Door	2005	Aiphone Intercoms
IX-DV	2000	Aiphone Intercoms

To adjust details on an already added station, click anywhere on the line to select a station, then click **Modify**. Enter the revised settings and click **OK**.



To verify that the stations have been added successfully, click the system tree from the top menu, then click the caret next to Hardware. Click the Aiphone Intercom tab, which will display the stations and their connection status.

