

IX|IXG Series

Genetec™ Security Center Integration

Introduction

IX|IXG Series stations can integrate with the Genetec™ Security Center platform. This guide covers station integration with the Sipelia™ and Omnicast™ modules for Security Center. This guide does not cover the installation of Security Center or any modules. It also assumes that IXG Support Tool has been installed and basic programming is complete. If that is not the case, resources are available in the links below.

IXG Support Tool: <https://www.aiphone.com/IXG-SupportTool>

IX|IXG Multi-Tenant QuickStart Guide: <https://www.aiphone.com/IX-IXG-Multitenant-QSG>

IXG Support Tool Navigation

Save



The **Save** button save configured settings in IXG Support Tool, but does not upload settings to the stations. It may be labeled as **Update** in some editions of IXG Support Tool. If that is the case, download the newest version from the link above, which is required for Genetec integration.



Hand Icon

Look for the Hand Icon to indicate where to click to select or save a setting.

ONVIF Streaming (IXG Support Tool Settings)

Setting Credentials

In IXG Support Tool, navigate to **Station Information**, ID/Password on the side menu. Add an ONVIF ID, ONVIF Password, RTSP ID, and RTSP Password to each station that will stream to Security Center. Record these for later steps. Click **Save**.

Unit Number	Station Name	ID / Password							
		ID(Administrator)	Password(Admin)	User ID	User Password	ONVIF ID	ONVIF Password	RTSP ID	RTSP Password
001	Entrance Station1	aiphone	*****			streaming	*****	streaming	*****

Enabling Video Streaming (IXG-DM7-HIDA only)

To enable video streaming on an IXG-DM7-HIDA entrance station, navigate to **Network Settings**, **Video** on the side menu. Scroll right and find the **Second Video Encoder** column under **ONVIF Transmit Channel**. Use the drop-down menu to change the setting to **Enable** for each IXG-DM7-HIDA to be registered. Click **Save**.

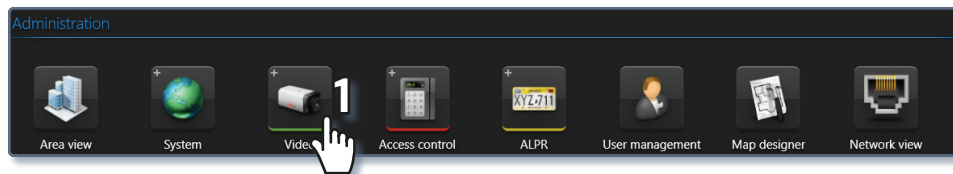
Building Nu	Unit Number	Station Name	ONVIF Transmit Channel	
			Video Streaming	Second Video Encoder
01	1000	Front Entrance		Disable
01	1001	Master Station1	Enable	Enable
01	1002	Tenant Station1		Disable



This step is not required for other station models.

ONVIF® Streaming (Genetec Config Tool Settings)

Log into the Genetec Config Tool. Navigate to **Administration**, **Video** on the top menu. Click **+Video Unit** on the bottom left of the screen, which will open a **Manual Add** window.



To add a door or entrance station to the system, fill in the IP address, ONVIF ID, and password. Set the HTTP port to 80 and the manufacturer to ONVIF. Click **Add**. Repeat the steps for each IXG-DM7-HIDA and door station that will stream video to Genetec.



Use port 10080 for IXG-DM7-HIDA entrance stations below firmware version 4.84. See the steps on page 7 of this guide to see how to find the station's firmware version.

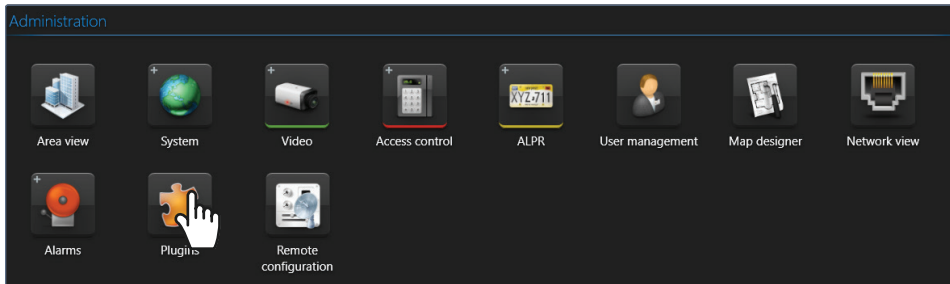
Sipelia Registration (Genetec Config Tool Settings)

Stations can be registered to Sipelia to place calls to a phone number or extension.

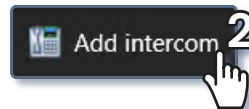
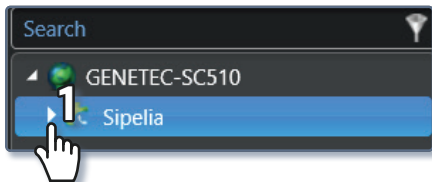
Log into the Genetec Config Tool. Navigate to **Administration**, Plugins on the top menu.



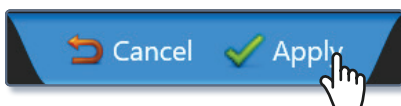
If the stations will not be registered to Sipelia, skip to page 8 for instructions on updating the stations' firmware in IXG Support Tool.



Click the caret next to Sipelia to expand then options, then click **Add Intercom** at the bottom of the screen.



Assign the intercom an extension and a password. These can either be entered manually, or click **Auto-Assign** to apply the next available extension. Click **Apply** to save the SIP settings. Repeat these for each station to be registered, and record the SIP extensions and password for later.



Sipelia Registration (IXG Support Tool Settings)

Advanced View


Select **View(V)**, Advanced on the top menu.

Adding VoIP Phones to Units

Stations in an IX|IXG Series system are divided into units, and each VoIP extension will need to be added to a unit as an answering station. Navigate to **Site Settings**, Units / Stations on the side menu. Click **Select** under a Master / Tenant Station column for the desired unit.

Unit Number	Unit Type		Units / Stations							
			Unit Name	First Name	Last Name	Phone Registration	Master / Tenant S		Master / Tenant S	
1000	Entrance	Select	Entrance1000					Select		Select
1001	Commercial	Select	Commercial1001			Disable	IX-MV7-*	Select		Select

A pop-up window will appear. Click **VoIP Phone** . Repeat this for all units that will have a VoIP extension and click **Save** .

 Only one VoIP phone can be added per unit. Only Commercial and Guard units can contain a VoIP phone. To call multiple numbers at once, add a single VoIP phone to a single unit, then create a call group with multiple numbers in Sipelia.

Select Station

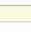
IX-MV7-*

IX-SOFT

IX-RS-*

VoIP Phone

Delete



Cancel

Display Settings

☒ First Name / Last Name

Number of Master Stations

2

Number of Door / Entrance Stations

1

2

3

4

5

6

7

8

Apply

If there is not a spare column for the VoIP extension, use the drop-down menu under Display Settings at the top of the page to increase the Number of Master Stations. Click **Apply**.

Assigning Extensions to Stations

Navigate to **Station Information, Identification** on the side menu. For each station or VoIP phone that is registered with Sipelia, change the Station Number to the extension. Click **Save**.

Station Type	Station Number	Station Name
IXG-DM7(-)	1001	Entrance Station1
VoIP Phone	2001	VoIP Phone1

Adding SIP Server Information

Navigate to **Network Settings**, **SIP** on the side menu. Under **Primary Server**, add the ID and password assigned to the stations in Sipelia™. Enter the IP address of the PBX under **IPv4 Address**. If needed, secondary and tertiary SIP server information can be added by scrolling to the right. Repeat this for all stations to be registered to Sipelia and click **Save**.

Unit Number	Station Name	SIP			
		SIP Connections		Primary Server	
		SIP Signaling Port	User Agent	ID	Password
1000	Front Entrance	5060		pbxid	*****

Adding Stations to Station Address Books

To add or remove stations from each others' address books, navigate to **System Information**, **Station List** on the side menu. This will present a table with entrance stations, answering stations, and apps as rows, and all stations and apps as columns. In the cells where the stations meet, if there is a check mark beneath **Select** where the stations meet, the column station will be in the row station's address book. If the cell is empty, it is not. Click the cell to change it as needed.

Unit Number	Station Name	01 / 1000 / 10000			01 / 1001 / 10010		
		Front Entrance / IXG-DM7(-*)			VoIP Phone2 / VoIP Phone		
		Select	Network Camera	or Release But	Select	Network Camera	or Release But
1000	Front Entrance				✓		
1001	Master Station1	✓			✓		

Once this has been done for all stations, click **Save**.

Configuring IXG-DM7-HIDA Call Buttons (optional)

At this point, any IXG-DM7-HIDA entrance stations will be able to call VoIP phones in their address books by manually typing in the extension numbers. Direct call buttons can be configured instead, simplifying operation.

To enable direct call buttons, navigate to **Entrance Station Settings**, **Display** on the side menu. Use the drop-down menu under **Call by List** to change the setting from disable to enable for each entrance station.

Unit Number	Station Name	Display			
		Navigation Icon Settings			
		Door Release Keypad	Door Release QR Code	Call by Unit Number	Call by List
1000	Front Entrance	Enable	Disable	Enable	Disable

To make the direct call list the default view presented to visitors, scroll right and use the drop-down menu under Default Display Screen to search by list screen.

Once this has been done for all stations, click **Save**.

To assign a call button, navigate to **Entrance Station Settings**, Direct Call List. There are up to 500 buttons available going from left to right, starting with Button Number 1. Click **Select** on a button beneath a station.

Unit Number	Station Name	Display
		Default Display Screen
1000	Front Entrance	Call by Unit Number Screen
		Door Release Keypad
		Call by Unit Number Screen
		Search by List Screen

Unit Number	Station Name	Direct Call List			
		Display Thumbnail Image	Button Number1		
			Building	Unit Number	Select Unit
1000	Entrance Station1	<input type="checkbox"/>			Select

A new window will appear. Check off a unit to be called by the button, then click **OK**. Repeat this for each button to be configured on the entrance station. More buttons can be viewed by scrolling right.

Select Unit

Select a Destination Unit.

Select	Building Number	Unit Number	Unit Name
<input type="checkbox"/>	01	1001	Commercial1001
<input type="checkbox"/>	01	1002	Residential1002
<input type="checkbox"/>	01	1003	Outside Area 100

OK

Cancel

i Each button in the direct call list can only call a single unit. It will call all stations, apps, and registered VoIP extensions in the unit at the same time.

Direct call buttons can be copied from one entrance station to another. Click **Copy Direct Call List** at the top of the page. Set which a building and the station whose settings will be copied using the drop-down menus under Copy Source Station. Check Destination Units under Select item(s) to copy, and click **Select** to choose which entrance stations will receive the copy. Click **Execute**.

Repeat these steps for each station and click **Save**.

Copy Direct Call List

Copying the thumbnail will register the thumbnail image along with the thumbnail settings.

Copy Source Station

Building Number / Building Name

01/Building1

Station Number / Station Name

10000/Entrance Station1

Select item(s) to copy

Destination Units

Thumbnail Images

Copy Destination Station(s)

Select

Station(s) Selected

Execute

Cancel

Configuring Door Release (Optional)

Each entrance station has a door release key that is automatically generated when the station is added to the system. When the entrance station is in communication with a phone, the number can be entered on the phone's keypad to release the door. To shorten the code, navigate to **Function Settings**, Door Release on the side menu. Use the drop-down menus under Display to select the building and range of stations that includes the entrance station. Click **Apply**.

Display

Building Number / Building Name

01/Building1

▼

Station Number

10000 - 106

▼

Apply

The answering stations will be displayed as rows, and the entrance stations will be listed in the columns. Find the column for the door and entrance stations. Replace the default number under Door Release Key with the desired number.

Repeat these steps for all stations and click **Save**.

Unit Number	Unit Name	Door Release	
		Door Release Assignment	
		1000 / 10000 / Front Entrance / IXG-DM7(-*)	
		Contact Assignment	Door Release Key
1001	Commercial1001	Destination Station	9
1002	Residential1002	Destination Station	9
1003	Outside Area 1003	Destination Station	9

Navigate to **Option Input / Relay Output**, Relay Output on the side menu. Scroll right and find the Door Release Key column. Replace the key for the desired door and entrance stations and click **Save**.

Building Nu	Unit Number	Station Name	Relay Output
			Relay Output 1 (Output Tim
			Door Release Key
01	1000	Entrance Station1	85558529392049745588
01	1001	Master Station1	62098581848829485359
01	1002	Guard Station1	44013452724667605806
01	1003	Video Door Station1	9
01	1004	Tenant Station1	88950927556786148848

Updating Firmware

To integrate with Genetec software, the entrance stations' firmware will need to be up to date. To check the current firmware version of the stations, select **Connection(S), Station Search** on the top menu. A station search will begin automatically. Click **Cancel** after 5 seconds. The current firmware version will be displayed to the right.

Check the latest firmware versions at www.aiphone.com/kbtopic/firmware-ix-ixg. Download and extract the newest version of the IXG-DM7-HIDA firmware. If there are multiple options, choose the one labeled "Enhanced."

If the HID® reader in the entrance station is being used, also download the sub-firmware.

Station Search					
Search results within the local network.					
Station List					
Building Nu	Unit Number	Station Name	Station Type	IP Address	MAC Address
		Entrance Station1	IXG-DM7(-*)	192.168.1.25	00:0B:AA:41:05:8
					Firmware Version
					2.93

Update Firmware

Download the log file before updating IXG-2C7(-*), IXG-DM7(-*), and IXGW-(T)GW with version 1.02 or older. To download the log file, go to "Connection -> Download Log File".
To check the current firmware version, go to "Connection -> Station Search".

Select Firmware files:

IXG-2C7(-*)

IXG-DM7(-*)(Main)

IXG-DM7(-*)(Sub)

IXG-MK

IXGW-(T)GW

IXGW-LC

IX-MV7-*

Browse

Browse

Browse

Browse

Browse

Browse

Navigate to **Maintenance, Firmware Update** on the side menu. For each type of station to be updated, click **Browse** to locate the firmware package on the PC.

IX-DV,IX-DVF(-*)

IX-DVM

IX-SSA(-*)

IX-EA,IX-EAU

IX-FA

Browse

Browse

Browse

Browse

Browse

Select Station(s) to update:

Station List					
Select	Building Nu	Unit Number	Station Name	Station Type	Status
<input type="checkbox"/>	01	1111	Tenant Station1	IXG-2C7(-*)	-
<input type="checkbox"/>	01	1111	Video Door Station1	IX-DV,IX-DVF(-*)	-
<input checked="" type="checkbox"/>	01	1112	Master Station1	IX-MV7-*	-
<input type="checkbox"/>	01	1112	Video Door Station1	IX-DVM	-
<input type="checkbox"/>	01	1113	Entrance Station1(Main)	IXG-DM7(-*)	-

Select Station by Type.
All Select Unselect

Update

Select all stations that will have their firmware updated and click **Update**. This process will take several minutes, and the stations will reboot.

i Do not interrupt a firmware update once it has begun, including unplugging the station. Doing so can damage the station. A notification window will appear when all firmware updates are complete.

i In order to update an IXG-DM7-HIDA's sub-firmware, the built-in card reader's Wiegand connection must be connected to an access control panel.

Upload Settings

To upload settings to the stations, navigate to **Connection(S)**, Upload Settings on the top menu.

Select each station by placing a check mark next to it, or click **Select** to select all stations at once. Click **Settings** to upload station settings. This will apply all settings to the stations.

Select	Building Nu	Unit Number	Station Name	Station Type	Status
<input checked="" type="checkbox"/>	01	1000	Entrance Station1	IXG-DM7(-*)	-
<input checked="" type="checkbox"/>	01	1001	Tenant Station1	IXG-2C7(-*)	-
<input checked="" type="checkbox"/>	01	1002	Guard Station1	IXG-MK	-
<input checked="" type="checkbox"/>	01	1003	Master Station1	IX-MV7-*	-
<input checked="" type="checkbox"/>	01	1003	Video Door Station1	IX-EA,IX-EAU	-
<input checked="" type="checkbox"/>	01	1004	Video Door Station1	IX-DVM	-
<input checked="" type="checkbox"/>	01	1004	Video Door Station2	IX-DV,IX-DVF(-*)	-
<input checked="" type="checkbox"/>			Gateway Adaptor1	IXGW-(T)GW	-
<input checked="" type="checkbox"/>			I/O Adaptor1	IXW-MA	-

i If a station upload fails, make sure that the programming PC is in the same IP range as the stations.

Exporting System Configuration

Once the Upload is complete, select **File(F)**, Export System Configuration from the top menu. Click **Export** to save as a backup. This will create a folder with the name of the configuration. **This entire folder is necessary to import the site information into IXG Support Tool.** If the configuration needs to be emailed, compress it first.