

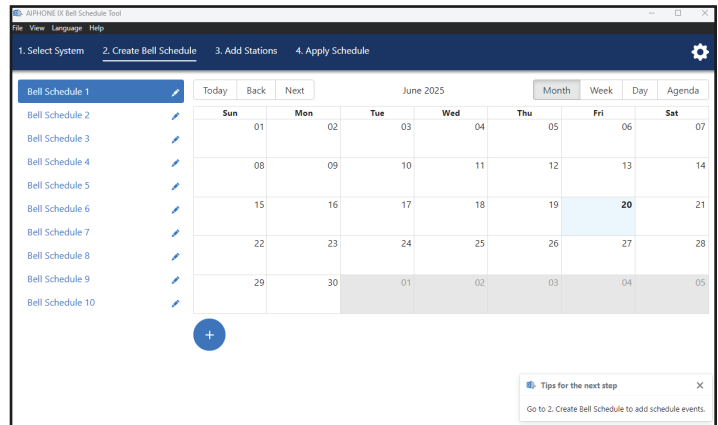
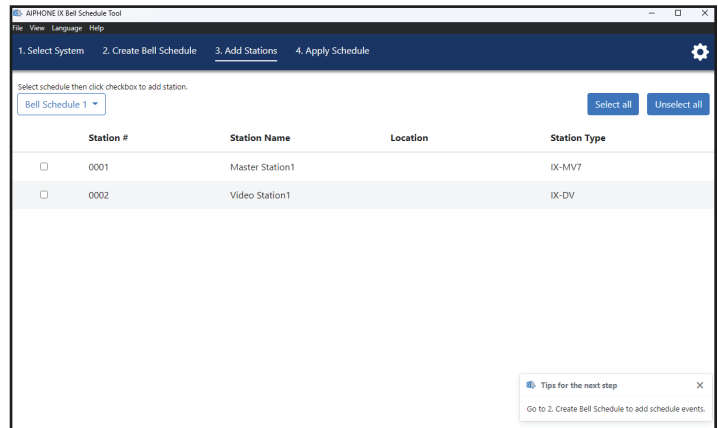
IX Bell Schedule Tool

Bell Schedule Software for IX Support Tool

The IX Bell Schedule Tool is an add-on software for the IX Support Tool. It connects to the support tool to assist in configuring and uploading bell schedules for an existing IX Series installation.

Up to 10 different bell schedules can be created, with a limit of up to 50 weekly events and 50 daily events. Bell schedule events can use existing station sounds, or custom .wav files can be uploaded to the stations through IX Support Tool. Bell schedules can also be applied to different station groups, permitting customized schedules.

The IX Bell Schedule Tool can only configure bell schedule settings. It is not compatible with IXG Support Tool or AiphoneCloud Remote Management.



- **Create bell schedules for multiple stations simultaneously**
- **Works with existing IX Support Tool configuration**
- **Customize up to 10 schedules**
- **Schedule recurring or one-off events with weekly or daily schedules**
- **Simplify bell schedule programming without affecting other settings**

Compatibility

- Door/Sub Stations** IX-EA, IX-DVM, IX-DV, IX-DVF-*, IX-SS-2G, IX-NVP, IX-NVP-*, IX-RS-*
- Answering Stations** IX-MV7-B, IX-MV7-W, IX-MV7-HB, IX-MV7-HW-JP, IX-MV7-HB-L
- Emergency Stations** IX-DVF-RA, IX-DVF-2RA, IX-SSA-RA, IX-SSA-2RA
- Support Tool Versions** IX Support Tool version 7.1.0.0 or later

System Requirements

- Operating System** Windows® 7 Professional, Enterprise, Ultimate
Windows 8, Pro, Enterprise
Windows 8.1, Pro, Enterprise
Windows 10 Home, Pro, Enterprise, Education
Windows 11 Home, Pro, Enterprise
- CPU** 32 bit (x86) processor or 64 bit (x64) processor, 1GHz or higher
- Memory** 4GB
- Screen Resolution** 1280 x 768