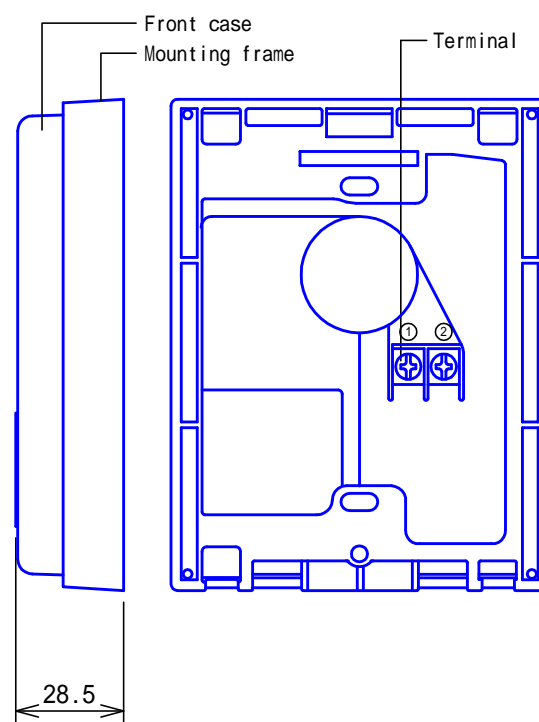
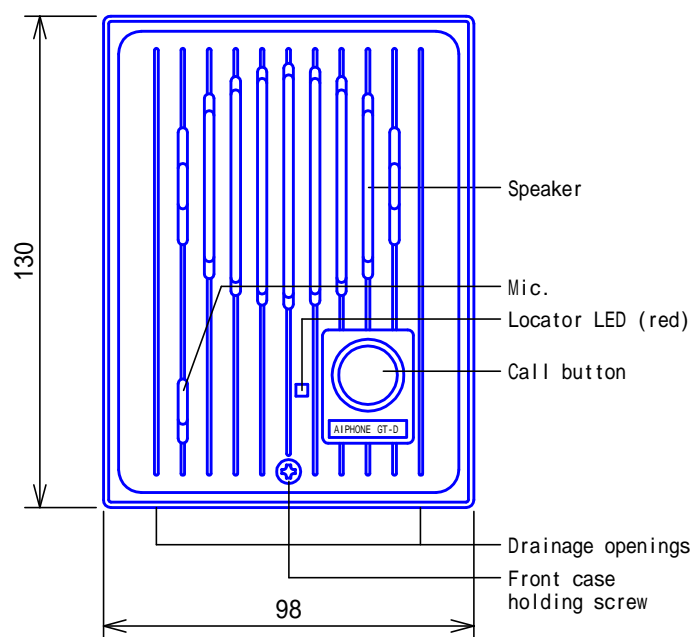
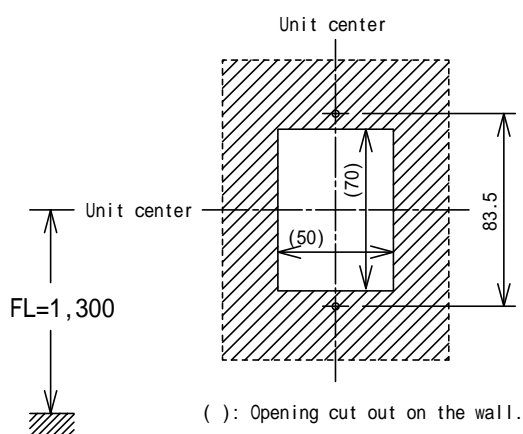


## PRODUCT DRAWING

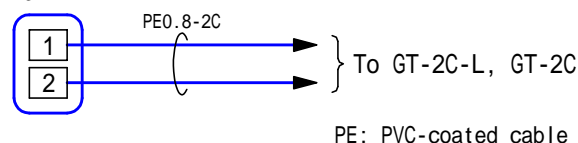


## MOUNTING



## WIRING DIAGRAM

Door station  
GT-D



For wiring distance range, refer to the Residential station to be connected.

## RESTRICTIONS

Water escape holes on bottom must not be covered with caulking seals.

## FUNCTIONS

Calling and communicating with Residential station by pressing Call button.  
Locator LED lit in red while Residential station is being powered

## SPECIFICATIONS

Power source	Supplied from Residential station		
Type of communication	Open voice handsfree communication		
Mounting	Surface wall-mount		
Electrical box	Single-gang box		
Housing	Fire-retardant PC+PS plastic		
Weight	200g(approx.)		
Unit color	Chocolate brown (10YR2/2 Munsell Approximation)		
Remarks	Weather-resistant (Complies with JIS C 0920 IPX 3)		
DESCRIPTION DOOR STATION	FIG. NAME PRODUCT/SPEC./WIRING/RESTRIC./FUNC.	UNIT mm	DATE 11 March, 2011
MODEL NO. GT-D	FIG.NO. G57686-1-1	PAGE 1/1	REVISION 1
<b>AIPHONE</b>			