



FEATURED PRODUCTS

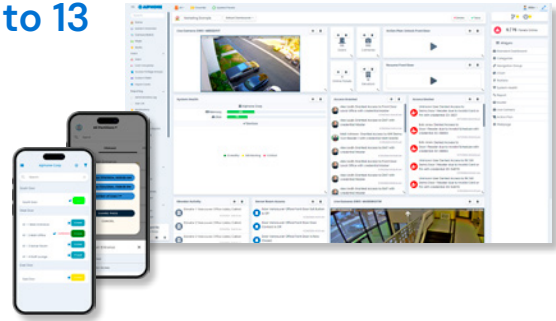


UNCOMPROMISED SECURITY

Powered by Human Connection

AC Nio Access Control → Pages 4 to 13

An intuitive and scalable access management software designed for businesses of all sizes. Easily manage your building's security with our enterprise-level features, helping you enhance security, streamline access management, and improve operational efficiency.



IX|IXG Series IP Video Intercom → Pages 14 to 29

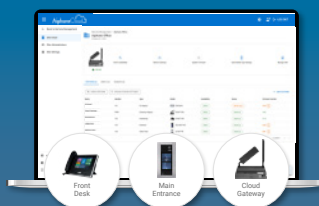
The IX|IXG Series delivers comprehensive security communication for commercial and multi-tenant properties. Combine physical stations, PC software, and mobile apps to give security teams the flexibility to answer calls and respond from anywhere.

Scale from single-door installations to complex multi-site deployments and easily handle entry security, emergency response, and internal communication in one reliable platform.

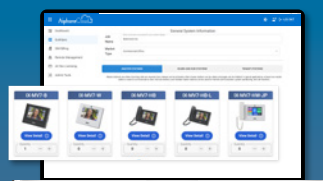
Integrate with video management systems, IP cameras, and telephone systems through ONVIF® and SIP compliance. Pair with our AC Nio access control to unify communication and access management.



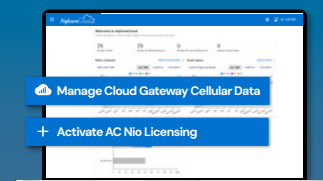
Save time, money, and deliver more value to customers.



REMOTE MANAGEMENT



SYSTEM DESIGN



SUBSCRIPTION RENEWAL

JP Series Video Intercom → Pages 30 to 33

The JP Series delivers reliable security communication for schools, commercial offices, and larger properties without requiring a network. Its two-way audio and wide-angle camera with image capture make it easy to see who is outside and speak with them before allowing entry.

Designated call partitioning ensures that visitors are screened by the proper individual, while clear room-to-room communication keeps daily operations running smoothly. Staff can call every station at once or contact a single station to reach a specific area.



JO Series Video Intercom → Pages 34 to 37

The JO Series combines hardwired reliability with mobile convenience for single-family homes and small businesses. Answering stations with 7" screens provide clear video quality and intuitive controls for on-site communication, while mobile apps enable remote access to answer calls, view live video, and unlock doors from anywhere.

All essential features, including video recording and storage, come standard with no monthly subscription fees.



JV Series Video Intercom → Pages 38 to 40

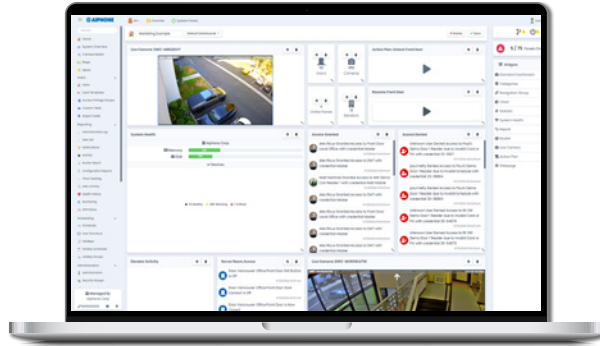
The JV Series delivers smart video doorbell functionality for homeowners and small business owners who want security without complexity. See and speak with visitors through high quality cameras and clear two-way audio.

The weather-resistant door station mounts cleanly to home exteriors with a modern finish. Simple installation and no recurring costs for video recording and storage make it an accessible security solution.



**CONTACT YOUR LOCAL EXPERT TO LEARN
MORE ABOUT AIPHONE SOLUTIONS**

AC Nio Access Control Software



AC Nio

Access Control Management Software

- User-friendly software makes it easy to program and maintain everyday functionality
- Licenses exist for different deployment sizes that range from 40 to unlimited doors and cameras
 - One partition with 40 doors/cameras
 - Five partitions with 80 doors/cameras
- Unlimited partitions with 125 or more doors/cameras
- Lightweight Directory Access Protocol (LDAP) integration with licenses for 80 or more doors/cameras
- Can be installed on a local PC or server, or hosted on AiphoneCloud as AC Nio Cloud

Operating System Windows® 7 Professional, Windows® 7 Enterprise, Windows® 7 Ultimate or later

CPU 32 bit (x86) processor or 64 bit (x64) processor, 2 GHz or faster

Memory 4 GB or higher

Required Storage 1 GB (additional space required for database)

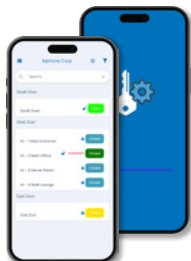
Runtime .NET Framework 4.5 or later

SQL Server Microsoft SQL Server 2008 or SQL Server 2008 Express or higher



For AC Nio licensing options, scan the QR code or visit <https://www.aiphone.com/kb/ac-nio-licensing-options/>

Access Control Mobile Apps



AC Nio Admin

Administrative Mobile App
(free with AC Nio Management Software Licenses)

- Companion app to AC Nio, provides many of the same administrative tools as the full-featured PC software
- Add, edit, and monitor all sites, locations, and users
- Issue credentials, revoke access, view recent alerts, and get notifications
- See real-time status of doors, floors, inputs, and outputs
- Remotely lock or unlock doors
- Available on Apple® iOS and Google Play™

Operating System Android: 5.1 or newer
iOS: 13.4 or newer

Requirements Active AC Nio™ license



AC Key

Digital Key Mobile App
(free with AC Nio™ Management Software Licenses)

- Unlock doors using a mobile device in addition to physical credentials
- Create visitor passes for guests to grant them temporary access; issue passes via text or email
- Visitor pass recipients do not need AC Key installed
- Functions available in the IXG Mobile App
- Activity can be tracked with AC Nio
- Users can be assigned to specific partitions or the entire site
- Works on the local network or off-site with port forwarding
- Create lists of frequently used doors
- Available on Apple® iOS and Google Play™

Operating System Android: 5.1 or newer
iOS: 13.4 or newer

Requirements Active AC Nio™ license

Access Control Hardware



AC-2DM-B

PoE Two-Door Access Controller

- Two Wiegand reader inputs
- Two solid state dry contact relays
- Integrated lock power (12V DC, 500mA)
- Four configurable inputs
- Infrared motion sensor
- Up to 100,000 card users
- Built-in diagnostic LCD
- PoE powered
- Custom scripting and actions available
- NDAA and TAA compliant
- UL and ULC Listed (UL 294/ULC S319-05)



AC-2DM-W

PoE Two-Door Access Controller

Power Source PoE (IEEE 802.3af)

Motion Sensor Passive infrared

Lock Power 12V DC, 500mA

Option Power 12V DC, 300mA

Contact Rating 24V DC, 1A

Network Protocols IPv4, IPv6, TCP, UDP, HTTPS

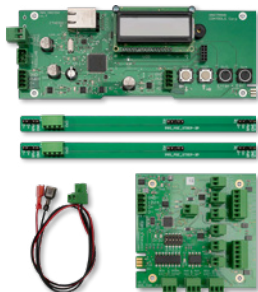
Reader Inputs Wiegand

Card Storage Up to 100,000 users per controller

Event Storage Up to 50,000 events (first in, first out)

UL Listing UL 294/ULC S319-05

Dimensions 3 1/2 in H 10 in W 2 3/8 in D
88.9 mm H 254 mm W 60.3 mm D



ACS-2DR

Two-Door Access Control Starter Kit (includes one door answering controller, one AC-2DE expander board, and two AC-STRIPs—included with ACS-2DR-C kit and is sold separately for AC-CA1 enclosure, p.10)



ACS-2DR-C

Two-Door Access Control Starter Kit with Enclosure (includes one ACS-2DR starter kit and one AC-C enclosure, which has space for the required AC-PS1267 power supply—up to three AC-2DE expander boards can be added for an eight-door capacity)

- Starter kit includes a ventilated lockable steel enclosure (AC-C) with a answering door control board and a two-door expander board (AC-2DE)
- Designed to fit an AC-PS1267 power supply (sold separately) and up to four expansion boards.
- Up to three AC-2DE expander boards can be added to manage up to eight doors
- Two Wiegand reader inputs per AC-2DE (kit includes one AC-2DE and up to three more can be added)
- Integrated lock power for each door (12V DC, 500mA)
- Two solid state dry contact relays per door
- Three dry contact inputs per door
- Built-in diagnostic LCD
- Custom scripting and actions available
- Can support up to 8 doors with additional AC-2DEs
- Short and over-voltage protection
- Dedicated port for battery backup
- TAA and NDAA compliant
- Standoffs are included for board mounting
- Lockable, vented, and includes nine conduit knockouts on the sides and the back of the enclosure
- Can be used on its own or as part of a larger AC Series access control system with additional components

Power Source 12V DC—use AC-PS1267

NIC RJ45 Ethernet Port 10/100Mbps

Board Communication: RS485 (AC-STRIP)

Network Protocols IPv4, IPv6, TCP, UDP, HTTPS

Card Storage Up to 100,000 users per controller

Event Storage Up to 50,000 events (first in, first out)

UL Listing UL 294/ULC S319-05

Dimensions 19 3/8 in H 13 5/8 in W 3 in D
492.1 mm H 346.1 mm W 76.2 mm D

Access Control Hardware



The ACS-ELS includes one elevator answering controller, one AC-2DE expander board, one AC-IOE expander board, and one AC-C enclosure. The enclosure has space for the required AC-PS1267 power supply, which is sold separately.

ACS-ELV

Single Elevator Access Control Starter Kit with Enclosure

- Two Wiegand inputs per AC-2DE
- Eight solid state dry contact relays per AC-IOE
- Eight solid state dry contact inputs per AC-IOE
- NDAA and TAA compliant
- Supports up to 64 floors with a single elevator cab; up to 32 floors with two elevator cabs
- One AC-2DE can be added for a second elevator cab
- Up to seven AC-IOE boards can be added

Power Source PoE (IEEE 802.3af)

Motion Sensor Infrared

Lock Power 12V DC, 500mA

Option Power 12V DC, 300mA

Contact Rating 24V DC, 1A

Network Protocols IPv4, IPv6, TCP, UDP, HTTPS

Reader Inputs Wiegand

Card Storage Up to 100,000 users per controller

Event Storage Up to 50,000 events (first in, first out)

UL Listing UL 294/ULC S319-05

Dimensions 19 3/8 in H 13 5/8 in W 3 in D
492.1 mm H 346.1 mm W 76.2 mm D



The ACS-IO includes one I/O answering controller, one AC-IOE expander board, and one AC-C enclosure. The enclosure has space for the required AC-PS1267 power supply, which is sold separately.

ACS-IO
I/O Starter Kit with Enclosure

- Eight solid state dry contact relays per AC-IOE
- Eight solid state dry contact inputs per AC-IOE
- Built-in diagnostic LCD
- NDAA and TAA compliant

Power Source 12V DC—use AC-PS1267

NIC RJ45 Ethernet Port 10/100Mbps

Board Communication RS485 (AC STRIP)

Network Protocols IPv4, IPv6, TCP, UDP, HTTPS

UL Listing UL 294/ULC S319-05

Dimensions 19 3/8 in H 13 5/8 in W 3 in D
492.1 mm H 346.1 mm W 76.2 mm D

Access Control Hardware



Image is shown with AC-CA1 enclosure, ACS-2DR starter kit, AC-2DE expander boards, and Altronix® power supply. The starter kit and expander boards are sold separately.

AC-CA1

Lockable Steel Enclosure with Power Supply
(includes one Altronix® eFlow6NB power supply)

- Streamlined, self-assembly solution simplifies board layout and wiring, reducing installation time
- Selectable 12V DC or 24V DC
- Fire alarm disconnect
- Over voltage protection, low power disconnect
- Relay outputs for supervision

Power Source Input: 120V AC, 60Hz
Output: 12–24V DC, 6A

Material Steel

Operating Temp 32°~120°F (0°~49°C)

UL Listing UL 294/ULC S319-05

Dimensions Enclosure:
18 in H 4 1/2 in W 4 9/16 in D
457.2 mm H 114.3 mm W 115.9 mm D
Knockouts:
1 1/8 and 2 in diameter
28.6 and 50.8 mm diameter

**AC-C**

Steel, Vented, and Lockable
Wall-Mount Enclosure
(included with ACS-2DR-C,
ACS-ELV, and ACS-IO starter kits)

- Designed to hold an answering controller, an AC-PS1267 power supply, and up to four expansion boards
- Standoffs are included for board mounting
- Lockable, vented, and includes nine conduit knockouts on the sides and back of the enclosure

Material Steel

UL Listing UL 294/ULC S319-05

Dimensions Enclosure:
19 3/8 in H 13 5/8 in W 3 in D
492.1 mm H 346.1 mm W 76.2 mm D

Knockouts:
1 1/8 and 2 in diameter
28.6 and 50.8 mm diameter

**AC-2DE**

Two-Door Expander Board
(included with ACS-2DR-C and ACS-ELV starter kits)

Power Source 12V DC (drawn from main board)

Lock Power 12V DC 500mA

Option Power 12V DC 500mA

Contact Rating 30V DC, 1A

Dimensions 3 3/4 in H 3 1/2 in W
95.3 mm H 88.9 mm W

**AC-IOE**

Eight-Port I/O Expander Board
(included with ACS-ELV and ACS-IO starter kits)

Power Source 12V DC (drawn from main board)

Contact Rating 30V DC, 500mA

Dimensions 3 3/4 in H 3 1/2 in W
95.3 mm H 88.9 mm W

**AC-PS1267**

12V DC, 6.67A Power Supply

Power Input 90~264V AC, 50/60Hz

Power Output 12V DC, 6.67A

UL Listing UL 62368-1

Dimensions 5 3/4 in H 2 3/8 in W 1 1/4 in D
146.1 mm H 60.3 mm W 31.8 mm D

Proximity Reader & Bluetooth Accessories



AC-PROX-1G
1-Gang and
Mullion-Mount
125kHz Wiegand
Proximity Reader

- Compatible with Aiphone, HID, AWID, and Pyramid credentials
- Mullion or 1-gang mount
- Up to 6" read range
- Indoor and outdoor rated
- Horizontal or vertical mounting orientation

Power Input 5–14V DC

Power Draw 45mA

Frequency 125kHz

Certifications CSA, FCC CE, C-Tick

Credentials Aiphone 40-bit, HID, AWID, Pyramid

UL Listing UL 294/ULC S319-05

Operating Temp -40°~149°F (-40°~65°C)

Dimensions 1-gang bracket:

5 3/4 in H	2 7/8 in W	7/8 in D
146.1 mm H	73 mm W	22.2 mm D

 Mullion:

4 7/16 in H	1 5/8 in W	3/4 in D
112.7 mm H	41.3 mm W	19.1 mm D



AC-10K-1G
1-Gang Proximity
Reader with
Access Keypad

- Combination 125kHz Wiegand proximity reader and security keypad
- Up to a 6" non-contact read range with clamshell cards
- Compatible with Aiphone, HID, AWID, and Pyramid credentials
- Allows access with a pin code, a card swipe, or a pin code and card swipe together

Power Input 5–14V DC

Power Draw 50mA typical, 115mA peak

Frequency 125kHz

Certifications CSA, FCC, CE, C-Tick

Credentials Aiphone 40-bit, HID, AWID, Pyramid

UL Listing UL 294

Operating Temp -40°~149°F (-40°~65°C)

Dimensions AC-10K-1G:

4 5/16 in H	3 in W	11/16 in D
109.5 mm H	76.2 mm W	17.5 mm D

 AC-10K-M:

6 1/8 in H	1 3/4 in W	15/16 in D
155.6 mm H	44.5 mm W	23.8 mm D



AC-10K-M
Mullion-Mount
Proximity Reader
with Access Keypad



AC-BT-10K
1-Gang Bluetooth® and NFC™ Reader
with Access Keypad



AC-BT-M
Mullion-Mount
Bluetooth® and
NFC™ Reader

- 13.56MHz Bluetooth® reader
- Uses a Wiegand connection
- Supports a variety of Bluetooth® and NFC credentials
- AC-BT-M allows access with a card swipe
- AC-BT-10K allows access with a pin code, a card swipe, or a pin code and card swipe together

Power Input AC-BT-10K: 7–28V DC
AC-BT-M: 9–15V DC

Power Draw AC-BT-10K: 180mA peak at 12V DC
AC-BT-M: 150mA peak at 12V DC

Frequency 13.56MHz + Bluetooth (low energy)

Certifications CE, FCC, IC, UL

Credentials NFC, Bluetooth, STiD Mobile ID app for Android and iOS, STiD Mobile ID® Orange Pack ID + MIFARE Ultralight® and Ultralight C, MIFARE® Classic and Classic EV1, MIFARE Plus® (S/X) and Plus® EV1, DESFire® 256, EV1, EV2, EV3, NFC, HCE, PicoPass® (CSN only), and iCLASS™ (CSN only)

UL Listing UL 294

Operating Temp -22°~158°F (-30°~70°C)

Dimensions AC-BT-10K:
4 3/16 in H 3 1/8 in W 1 in D
106.4 mm H 79.4 mm W 25.4 mm D
AC-BT-M:
4 3/8 in H 1 11/16 in W 7/8 in D
111.1 mm H 42.9 mm W 22.2 mm D



AC-PC-40
Aiphone 40-Bit
125kHz Proximity Card

AC-PC-H26
HID® 26-Bit 125kHz
Proximity Card



AC-PF-40
Aiphone 40-Bit
125kHz Proximity Key
Fob with Brass Ring

AC-PF-H26
HID® 26-Bit 125kHz
Proximity Key Fob
with Brass Ring



AC-PT-40
Aiphone 40-Bit 125kHz Proximity
Disc Tag with Adhesive Backing

AC-PT-H26
HID® 26-Bit 125kHz Proximity
Disc Tag with Adhesive Backing

- Credentials come in three different form factors: a clamshell card, a key fob for attaching to a key ring, and a disc tag with an adhesive backing for attaching to a personal item
- AC-PC-40 and AC-PC-H26 have a 6" read range from card to reader
- AC-PF-40 and AC-PF-H26 have a 4" read range from fob to reader
- AC-PT-40 and AC-PT-H26 have a 3 1/2" read range from tag to reader
- Site code and card number are printed on credential

Format AC-PC-40, AC-PF-40, AC-PT-40: Aiphone 40-bit
AC-PC-H26, AC-PF-H26, AC-PT-H26:
HID 26-bit (H10301)

Frequency 125kHz

Material AC-PC-40, AC-PC-H26, AC-PF-40, AC-PF-H26: ABS
AC-PT-40, AC-PT-H26: PVC

Dimensions AC-PC-40, AC-PC-H26:
2 3/16 in H 3 3/8 in W 1/16 in D
55.6 mm H 85.7 mm W 1.6 mm D
AC-PF-40, AC-PF-H26:
1 1/2 in H 1 3/16 in W 1/8 in D
38.1 mm H 30.2 mm W 3.2 mm D
AC-PT-40, AC-PT-H26:
1 in H 1 in W 1/16 in D
25.4 mm H 25.4 mm W 1.6 mm D

IX|IXG Physical Answering Stations



IX-MV7-HB®
IP Video Answering
Station with Handset



IX-MV7-HB-L
IP Video Answering
Station with T-Coil
Supported Handset



IX-MV7-HW-JP®
TAA-Compliant IP
Video Answering
Station with Handset



IXG-MK®
IP Video Guard Station



IX-MV7-B®
IP Video
Answering Station



IX-MV7-W®
IP Video
Answering Station

- SIP compliant
- Video identification and monitoring with 7" LCD touchscreen
- Eight speed dial buttons
- Camera for two-way video calls, includes privacy shutter
- On-board recording with a microSD™ card (not included)
- Hands-free communication; IX-MV7-HB, IX-MV7-HB-L, IX-MV7-HW-JP, and IXG-MK have a handset for privacy
- Door release
- Brightness control
- Wall or desk mount (stand included)
- Toggle between a close-up view and an IP camera view with picture-in-picture
- Programmable inputs and outputs
- Building and tenant paging

Power Source PoE (802.3af)

Network Interface 10 BASE-T/100 BASE-TX Ethernet (RJ-45)

Network Protocols IPv4, IPv6, TCP, UDP, SIP

Bandwidth Usage Audio (G.722): 64Kbps x 2 for communication, 64Kbps for monitoring
Video (H.264): 32Kbps-2,048Kbps

Video Stream ONVIF® Profile S

Communication IX-MV7-HB, IX-MV7-HB-L, IX-MV7-HW-JP, IXG-MK: hands-free (full-duplex), push-to-talk (simplex), or handset (full-duplex)
IX-MV7-B, IX-MV7-W: hands-free (full-duplex) or push-to-talk (simplex)

Video Display 7" LCD touchscreen

Door Release Two N/O dry contacts, 24V AC/DC, 1A (IXG-MK has one dry contact)
Four contact inputs

Mounting Wall or desk mount (stand included)

Wire Type Cat-5e or Cat-6

Distance To network drop: 330'

Dimensions IX-MV7-HB, IX-MV7-HB-L, IX-MV7-HW-JP, IXG-MK:
8 1/16 in H 11 in W 2 3/16 in D
204 mm H 280 mm W 55.5 mm D
IX-MV7-B, IX-MV7-W:
6 3/4 in H 8 11/16 in W 1 1/4 in D
172 mm H 220 mm W 31.7 mm D



IXG-2C7
IP Video Tenant Station



IXG-2C7-L
IP Video Tenant Station
with T-Coil Compatibility

- Programmable inputs and outputs
- On-board recording with a microSD™ card (not included)
- Internal communication with up to eight stations within apartment/suite
- Hands-free communication
- Can call concierge/guard directly
- Can call elevator to floor (requires IXGW-LC)
- Video monitoring
- Answers calls from an entrance station, guard station, or individual door station
- Call all associated mobile apps connected to the same apartment/suite

Power Source PoE

Power Draw 1.9W standby, 5.9W max.

Video Display 7" TFT LCD touchscreen (800x400 resolution)

Communication Hands-free (full-duplex)

Audio Codec G.711 (μ-law, A-law)

Video Codec H.264, MJPEG

Network Protocols IPv4, IPv6, TCP, UDP, SIP

Encryption TLS 1.2

Operating Temp 32°~104°F (0°~40°C)

Material Stainless steel

Relays Two status outputs (requires GT-RY relay)
One contact input

Mounting Flush mount with IXG-FMK-2C7 or surface mount to wall

Wire Type Cat-5e or Cat-6

Distance To network drop: 330'

Dimensions 5 13/16 in H 8 15/16 in W 1 in D
148 mm H 227 mm W 25.3 mm D



IX-RS-B
IX-RS-W
IP Audio Room Sub
Station with Handset

- SIP compliant
- Hands-free communication or handset for privacy
- Internal communication with other sub stations
- 8Ω, 2W external speaker output for communication or paging (use 8Ω tap on SP-2570N)
- Illuminated call button indicator
- Communication/call tone volume control switch
- One contact output
- One trigger input

Power Source PoE (802.3af)

Audio Codec G.722 (μ-law, A law), G.722

Network Protocols IPv4, IPv6, TCP, UDP, SIP

Operating Temp 32°~104°F (0°~40°C)

Mounting Surface mount directly to wall

Wire Type Cat-5e or Cat-6

Distance To network drop: 330'

Dimensions 7 9/16 in H 3 9/16 in W 2 5/8 in D
192 mm H 90 mm W 67 mm D

IX|IXG Software Answering Stations



IX-SOFT
PC Answering Station Software



IX-SOFT
IX-SOFT-3
IX-SOFT-5
IX-SOFT-10
Supports 1, 3, 5, or 10 IX-SOFT Licenses
(1 license per dongle)



IXW-MAA-SOFT
IXW-MAA-SOFT-5
IXW-MAA-SOFT-10
Supports 1, 5, or 10
IX-SOFT Licenses

Video Codec	H.264/AVC, Motion-JPEG	Power Source	PoE (IEEE 802.3af class 0)
Audio Codec	G.711 (μ-law, A-law), G.722	Power Draw	4.48W max.
Network Protocols	IPv4, IPv6, TCP, UDP, SIP	Relay Output	10 Form C relays, 24V AC/DC 500mA
Encryption	TLS 1.2 (CRAM-MD5 for email)	Network Interface	Ethernet (10BASE-T, 100BASE-TX)
Packet Delivery	Unicast or multicast	Network Protocols	IPv4, IPv6, TCP, UDP
Station Capacity	Up to 499 stations (Up to 9,998 in expanded mode)	Port Security	IEEE 802.1X
Video Streaming	ONVIF® Profile S	Operating Temp	14°~ 122°F (-10°~ 50°C)
Operating System	Windows® 7 Professional, Windows® 7 Enterprise, Windows® 7 Ultimate Windows® 8.1, Windows® 8.1 Pro, Windows® 8.1 Enterprise Windows® 10 Home, Windows® 10 Pro, Windows® 10 Enterprise, Windows® 10 Education Windows® 11 Home, Windows® 11 Pro, Windows® 11 Enterprise	Mounting	Surface mount directly to wall or to 170mm DIN rail
CPU	32 bit (x86) processor or 64 bit (x64) processor, 2GHz or higher	Dimensions	4 1/4 in H 8 1/4 in W 2 3/8 in D 108.5 mm H 210 mm W 61 mm D
Memory	4 GB or higher		
Screen Resolution	1280 x 768 or greater		
Runtime	.NET Framework 4.6.2 or later (Windows® 7 requires SP1) Microsoft Visual C ++ Redistributable Package for Visual Studio 2017 or later		

IX|IXG Mobile App Answering Station



IXGW-TGW
AiphoneCloud Gateway
with SIM Card

- PoE (IEEE 802.3af class 0)
- DIN rail mountable
- Eight simultaneous calls per adaptor
- Supports up to 9,999 IXG mobile apps
- Optional 4G LTE data connection
- Allows telephone calls from door and entrance stations

Power Source PoE

Power Draw 2.8W standby, 5.8W max

LAN Ethernet (10BASE-T, 100BASE-TX)

Wireless Network LTE, WCDMA

Included SIM card AT&T™ nano SIM

Packet Delivery Unicast, Multicast

Network Protocols IPv4/v6, TCP, UDP, SIP, HTTPS, RTP, RTCP, SRTP, SRTCP, IGMP, MLD, SFTP, DHCP, NTP, DNS, MQTT, ICE, DTLS, SDP

Channel Intercom: 8

Phone: 1

Encryption TLS 1.2

Operating Temp 14°~122°F (-10°~50°C)

Wire Type Cat-5e or Cat-6

Distance To network drop: 330'

Dimensions 4 1/4 in H 8 1/4 in W 2 3/8 in D
108.5 mm H 210 mm W 61 mm D

Antenna length: 5 9/16 in 141.3 mm

IXGS-TE Telephone Entry and Mobile App Box Set

The IXGS-TE is a convenient kit that offers a complete telephone and mobile app entry solution for multi-tenant applications. It allows visitors to call telephone numbers or mobile apps using the entrance station.

The set includes an IXG-DM7-HIDA entrance station, an IXGW-TGW gateway adaptor, and an IXG-DM7-BOX flush-mount box.

An unlimited number of stations and optional accessories can be added to support various system requirements.



IX|IXG Multi-Tenant Video Door Stations



IXG-DM7-HIDA
IP Video Entrance Station
with HID® Card Reader

- Built-in HID® reader connects to third-party access control
- LCD directory screen
- Welcome screen can be customized
- Up to 9,999 names/numbers can be stored
- Motion sensor activates the screen
- Hands-free communication
- Rugged IP65 and IK08 ratings
- Modern and simple touchscreen interface
- Programmable inputs and outputs
- On-board recording with a microSD™ card (not included)



IX-DVF-4A
IP Video Door Station
with Four Call Buttons



IX-DVF-6
IP Video Door Station
with Six Call Buttons

- SIP compliant
- On-board recording with a microSD™ card
- Camera provides clear video
- Weather resistant
- Indoor or outdoor use
- PoE passthrough can power additional device (requires PoE+)

Power Source IXG-DM7-HIDA: PoE (IEEE 802.3af Class 0)

IX-DVF-4A, IX-DVF-6: PoE (802.3af), PoE+ (802.3at), or 24V DC—use PS-2420UL

Power Draw 4.2W standby, 12.7W max.

Video Display 7" TFT LCD touchscreen (800x400 resolution)

Communication Hands-free (full-duplex)

Camera IXG-DM7-HIDA: 720p HD
IX-DVF-4A, IX-DVF-6: 1/3" color CMOS 1.23 megapixel

Audio Codec G.711 (μ-law, A-law)

Video Codec H.264

Network Protocols IPv4/v6, TCP, UDP, SIP, HTTP, HTTPS, RTSP, RTP/RTCP, IGMP, MLD, SMTP, SFTP, DHCP, NTP, DNS, TLS

Operating Temp IXG-DM7-HIDA: -22°~140°F (-30°~60°C)

IX-DVF-4A, IX-DVF-6: -40°~140°F (-40°~60°C)

Card Reader High Frequency (13.56MHz): iCLASS, SEOS, iCLASS SR, iCLASS SE, MIFARE Classic, MIFARE DES Fire EV1
Low Frequency (125kHz): HID® Proximity
Bluetooth Interface (2.44GHz): mobile phone with compatible bluetooth

Material Stainless steel

Door Release IXG-DM7-HIDA: two programmable Form C dry contacts, 24V AC/DC; Relay 1: 3A
Relay 2: 500mA
IX-DVF-4A, IX-DVF-6: two Form C dry contacts, 24V AC/DC, 1A

Mounting IXG-DM7-HIDA: flush mount with IXG-DM7-BOX or surface mount with SBX-IXGDM7
IX-DVF-4A, IX-DVF-6: flush mount with included back box or surface mount with SBX-IXGDM7

Wire Type Cat-5e or Cat-6

Distance To network drop: 330'

Dimensions 13 11/16 in H 7 3/16 in W
347 mm H 182 mm W

IX|IXG Video Door Stations



IX-EA
IP Video
Door Station



IX-DVM®
Mullion-Mount
IP Video Door
Station



IX-DV®
IP Video
Door Station



IX-DVF®
IP Video
Door Station



IX-DVF-L
IP Video Door Station with
T-Coil Compatibility
(requires PoE and 24V DC)



IX-DVF-HW
IP Video Door
Station with
Hand Wave
Call Sensor
and Surface
Mount Box
(requires PoE+)



IX-DVF-PR
IP Video Door
Station with 125
kHz Wiegand
Proximity
Reader



IX-DVF-10KP
IP Video Door
Station with 125
kHz Wiegand
Proximity Reader
and Access
Keypad

- SIP compliant
- On-board recording with a microSD™ card
- Camera provides clear video
- Weather and vandal resistant (IX-EA is weather resistant only)
- Indoor or outdoor use
- PoE passthrough can power additional device with IX-DV, IX-DVF, IX-DVF-HW, IX-DVF-L (requires PoE+)

Power Source IX-EA, IX-DVM: PoE (802.3af)

IX-DV, IX-DVF, IX-DVF-HW: PoE (802.3af), PoE+ (802.3at), or 24V DC—use PS-2420UL

Communication Hands-free

Camera IX-EA, IX-DV, IX-DVF, IX-DVF-PR: 1/3" color CMOS 1.23 megapixel

IX-DVM: 0.9 megapixel/720p WDR camera

Area View: 2'1" vertical x 3'1" horizontal at 20"

Operating Temp IX-EA, IX-DV, IX-DVM, IX-DVF, IX-DVF-L: -40°~140°F (-40°~60°C)

IX-DVF-HW: -4°~131°F (-20°~55°C)

IX-DVF-10KP, IX-DVF-PR: -31°~140°F (-35°~60°C)

Material IX-EA: self-extinguishing ABS resin

IX-DV, IX-DVM: aluminum die cast cover

IX-DVF, IX-DVF-10KP, IX-DVF-HW, IX-DVF-L, IX-DVF-PR: stainless steel

Door Release IX-DVM, IX-EA: Form C dry contact, 24V AC/DC, 1A

IX-DV, IX-DVF, IX-DVF-10KP, IX-DVF-L, IX-DVF-HW, IX-DVF-PR: two Form C dry contacts, 24V AC/DC, 1A

Mounting IX-DV, IX-DVM, IX-EA, IX-DVF-HW: surface mount

IX-DVF: flush mount with included back box or surface mount with SBX-IDVF

IX-DVF-L, IX-DVF-PR: flush mount with included back box or surface mount with SBX-IDVFRA

IX-DVF-10KP: flush mount with included back box or surface mount with SBX-IXGDM7

Wire Type Cat-5e or Cat-6

Distance To network drop: 330'

To power supply: 50'

Card Reader 5–14V DC power input; 45mA power draw; 125kHz frequency; CSA, FCC, CE, C-Tick certifications

Dimensions	IX-EA:	IX-DV:	IX-DVM:
	6 5/16 in H	8 1/16 in H	6 7/8 in H
	3 15/16 in W	4 1/2 in W	1 7/8 in W
	1 3/4 in D	2 1/16 in D	1 5/16 in D
	160 mm H	207 mm H	175 mm H
	100 mm W	115 mm W	48 mm W
	43.5 mm D	52.5 mm D	34 mm D
	IX-DVF:	IX-DVF-L:	IX-DVF-10KP:
	10 7/16 in H	11 11/16 in H	13 11/16 in H
	5 7/8 in W	7 in W	7 3/16 in W
	265 mm H	297 mm H	347 mm H
	150 mm W	178 mm W	182 mm W
	IX-DVF-HW:	IX-DVF-PR:	
	11 11/16 in H	11 11/16 in H	
	7 in W	7 in W	
	3 3/16 in D	2 1/16 in D	
	297 mm H	297 mm H	
	178 mm W	178 mm W	
	81 mm D	52 mm D	

IX|IXG Audio Door Stations



IX-SS-2G®
IP Audio
Door Station

IX-SSA®
IP Audio
Door Station

IX-NVP
IP Audio
Door Station

IX-NVP2
IP Audio Door
Station with
Two Call Buttons

- SIP compliant
- Weather and vandal resistant
- Indoor or outdoor use
- PoE passthrough can power additional device with IX-SSA (requires PoE+)
- On-board recording with a microSD™ card (IX-SSA only)

Power Source IX-SS-2G, IX-NVP, IX-NVP2: PoE (802.3af)

IX-SSA: PoE (802.3af), PoE+ (802.3at) or 24V DC—use PS-2420UL

Communication Hands-free

Operating Temp -40°~140°F (-40°~60°C)

Material IX-SS-2G, IX-SSA: stainless steel

IX-NVP, IX-NVP2: powder-coated steel

Door Release IX-SSA: two Form C dry contacts, 24V AC/DC, 1A

IX-SS-2G, IX-NVP, IX-NVP2: Form C dry contact, 24V AC/DC, 1A

Mounting IX-SS-2G: flush mount with 2-gang box or surface mount with SBX-2G/A

IX-SSA: flush mount with included back box or surface mount with SBX-IDVF

IX-NVP, IX-NVP2: flush mount with 3-gang back box or surface mount with SBX-NVP/A

Wire Type Cat-5e or Cat-6

Distance To network drop: 330'

To power supply: 50'

Dimensions IX-SS-2G:

4 3/4 in H 4 3/4 in W
120 mm H 120 mm W

IX-SSA:

10 7/16 in H 5 7/8 in W
265 mm H 150 mm W

IX-NVP, IX-NVP2:

5 1/2 in H 7 1/2 in W
139.7 mm H 190.5 mm W

IX|IXG Emergency Stations



Stations are also available with French labels:

IX-DVF-2RA-FR®

IX-DVF-RA-FR®

IX-SSA-2RA-FR

IX-SSA-RA-FR

IX-DVF-2RA®

ADA Compliant IP Video Emergency Station with Two Call Buttons

IX-DVF-RA®

ADA Compliant IP Video Emergency Station

IX-SSA-2RA®

ADA Compliant IP Audio Emergency Station with Two Call Buttons

IX-SSA-RA®

ADA Compliant IP Audio Emergency Station

- Passthrough can power additional device (requires PoE+)
- SIP compliant
- On-board recording with a microSD™ card
- Lettering and braille signage
- LED call status indicator
- Two Form C relay outputs
- Weather and vandal resistant
- Fixed camera provides clear video (IX-DVF-2RA, IX-DVF-RA)
- Indoor or outdoor use
- Tamper resistant screws
- Can be mounted into emergency wall boxes or towers

Power Source PoE (802.3af) or 24V DC—use PS-2420UL

Communication Hands-free

Camera Type: 1/3" color CMOS 1.2 megapixel

Area View: 2'1" vertical x 3'1in Horizontal at 20"

Operating Temp -40°~140°F (-40°~60°C)

Material Stainless steel

Door Release Two Form C dry contacts, 24V AC/DC, 1A

Mounting Flush mount with included back box or surface mount with SBX-IDVFRA

Wire Type Cat-5e or Cat-6

Distance To network drop: 330'

To power supply: 50'

Dimensions 11 11/16 in H 7 in W
297 mm H 178 mm W

IX|IXG Adaptors



IXGW-LC[®]
Elevator Lift
Control Adaptor

- 20 Form C relays, each can be configured and assigned to a specific entrance station, tenant station, or mobile app
- Ensures visitors only have access to the proper guest floor
- Up to 16 adaptors per building
- Compatible with IXG-DM7-HIDA and IXG-2C7
- Wall mount with DIN rail (sold separately)

Power Source PoE

Power Draw 2.1W standby, 4.4W max.

Relay Rating 24V AC/DC, 500mA

LAN Ethernet (10BASE-T, 100BASE-TX)

Packet Delivery Unicast, Multicast

Network Protocols IPv4/v6, TCP, UDP, HTTPS, IGMP, MLD, SFTP, DHCP, NTP, DNS, TLS

Encryption TLS 1.2

Operating Temp 14°~122°F (-10°~ 50°C)

Distance To network drop: 330'

Dimensions 4 1/4 in H 8 1/4 in W 2 3/8 in D
108.5 mm H 210 mm W 61 mm D



IXW-MAA
Multi-Purpose
Adaptor

- Four contact inputs
- Ten Form C relay outputs
- 24V AC/DC 500mA relay contact rating
- Mountable to a 170mm DIN rail or directly to a wall

Power Source PoE (IEEE 802.3af class 0)

Power Draw 4.48W max.

Relay Output 10 Form C relays, 24V AC/DC 500mA

Network Interface Ethernet (10BASE-T, 100BASE-TX)

Network Protocols IPv4, IPv6, TCP, UDP

Port Security IEEE 802.1X

Operating Temp 14°~ 122°F (-10°~ 50°C)

Dimensions 4 1/4 in H 8 1/4 in W 2 3/8 in D
108.5 mm H 210 mm W 61 mm D



IXW-PBXA
IP PBX

- Supports up to 500 registered SIP devices and up to 75 concurrent calls
- Dual Gigabit network ports with integrated PoE+
- Built-in call recording server; recordings accessed via web interface
- Supports H.264, H.263, and H.263+ video codecs

Power Source 12V DC, 1.5A (supplied)

Network Interface Dual Gigabit with integrated PoE+ (IEEE 802.3at)

Network Protocols TCP/UDP/IP, RTP/RTCP, ICMP, ARP, DNS, DDNS, DHCP, NTP, TFTP, SSH, HTTP/HTTPS, PPPoE, SIP, STUN, SRTP, TLS, LDAP

Ports 2 FXO, 2 FXS

Encryption SRTP, TLS, HTTPS, SSH, 802.1X

Operating Temp 32°~104°F (0°~ 40°C)

Dimensions 11/8 in H 10 5/8 in W 7 in D
28.6 mm H 269.9 mm W 177.8 mm D



IPW-1VC
Two-Wire Network Adaptor Kit
(includes one transmitter, one receiver, and power supply)



IPW-10VC
Rack Mount Two-Wire Network Adaptor Kit

- Upgrade 2-wire analog systems to an IP video intercom
- Use existing wire—up to 1,000' (18–22AWG shielded or unshielded)
- Compact design is small enough to fit behind most door or sub stations
- LED status indicators

Power Source IPW-1VC: 48V DC, 1A—use included power supply
IPW-10VC: supplied by IPW-1VC

Power Draw < 2 Watts

Operating Temp –4°~140°F (–20°~60°C)

Mounting Supplied mounting bracket

Wire Type Cat-5e or Cat-6
2 cond., shielded or non-shielded between adaptors

Distance To network drop: 15'
Between adaptors:
1,000' (22 AWG, 18 AWG)

Dimensions

IPW-1VC:			
1 7/16 in H	3 in W	1 1/8 in D	
36.5 mm H	76.2 mm W	28.6 mm D	
IPW-10VC:			
1 3/4 in H	19 in W	11 in D	
44.5 mm H	482.6 mm W	279.4 mm D	



IPW-POE8
8-Port PoE+ Switch

- Eight 10/100/1000 BASE-T PoE ports
- 64W PoE power budget
- Supports both IEEE 802.3af and 802.3at PoE on all eight ports
- Quiet, fanless design
- Web interface for management

Power Source 100–240V AC, 54V, 1.574A DC

Power Draw 4.6W (PoE off), 77.9W (PoE on)

PoE Ports 8

PoE Power Budget 64W

Auto MDI/MDIX Yes

Switching Capacity 16Gbps

Packet Forwarding Rate 11.9Mbps

Packet Buffer Size 1.5Mbits

Operating Temp 32°~104°F (0°~40°C)

Dimensions

11/8 in H	6 3/4 in W	3 7/8 in D
28.6 mm H	171.5 mm W	98.4 mm D

IX|IXG Towers



TW-SA
TW-SE

Short Tower with ASSISTANCE or EMERGENCY Lettering



TW-TA
TW-TE

Tower with ASSISTANCE or EMERGENCY Lettering



TW-TA-SP
TW-TE-SP

Tower with Speaker and ASSISTANCE or EMERGENCY Lettering



TW-TA-ARM
TW-TE-ARM

Tower with Camera Arm and ASSISTANCE or EMERGENCY Lettering



TW-TA-ARM-SP
TW-TE-ARM-SP

Tower with Camera Arm, Speaker, and ASSISTANCE or EMERGENCY Lettering

- Includes UL Listed electrical box
- Constructed with lightweight, durable aluminum
- Large access panel at the rear base of the tower
- ASSISTANCE or EMERGENCY lettering on three sides
- Beacon is always lit and strobes during emergency call-in (requires 24V DC)
- LED illumination above call station (requires 24V DC)
- Call button mounting height and signage meet ADA regulations

Material Aluminum 6061-T6

Weight TW-SA, TW-SE: 43 lbs
TW-TA, TW-TE: 68 lbs
TW-SA-SP,
TW-SE-SP: 87 lbs

TW-TA-ARM,
TW-TE-ARM: 80 lbs
TW-SA-ARM-SP,
TW-SE-ARM-SP: 99 lbs

Dimensions	TW-SA, TW-SE:	TW-TA, TW-TE:	TW-SA-SP, TW-SE-SP:	TW-SA-ARM, TW-SE-ARM, TW-SA-ARM-SP, TW-SE-ARM-SP:
	73 in H	112 in H	127 in H	174 in H
	8 in W	8 in W	8 in W	8 in W
	8 in D	8 in D	8 in D	15 3/4 in D
	1854.2 mm H	2844.8 mm H	3225.8 mm H	4419.6 mm H
	203.2 mm W	203.2 mm W	203.2 mm W	203.2 mm W
	203.2 mm D	203.2 mm D	203.2 mm D	400.1 mm D



TW-MKL
L-Bolt Mounting
Kit for Towers

Contents 4 L-bolts, 4 nuts, 4 washers

Dimensions 24 in long, 3/4 in diameter
609.6 mm long, 19 mm diameter

IX|IXG Solar Tower



TWS-Z4

Zone 4 Solar Tower Set (includes one solar panel)

TWS-Z2

Zone 2 Solar Tower Set (includes two solar panels)

TWS-Z1

Zone 1 Solar Tower Set (includes three solar panels)

- Wireless solar solution uses the sun to power all components
- Assembled sets include WB-HE wall box, mounting pole, battery and electrical enclosure, WiFi device, and one, two, or three solar panels
 - TWS-Z1 with three panels is recommended for zones rated 1.0 to 1.9
 - TWS-Z2 with two panels is recommended for zones rated 2.0 to 3.9
 - TWS-Z4 with one panel is recommended for zones rated 4.0+
- TWS-Z4 and TWS-Z2 can be mounted above ground (TWS-Z1 requires underground mounting due to weight)

Power Source 24V DC supplied from batteries

Solar Panel 160W 12V

Wireless Ubiquiti LoCo5AC 5GHz, 450+Mbps (requires line of sight for connectivity)

Battery Bank 12V DC 220AH

Operating Temp -40°~140°F (-40°~60°C)

Material Aluminum tower with 5052 aircraft grade aluminum electrical enclosure

Dimensions Tower:

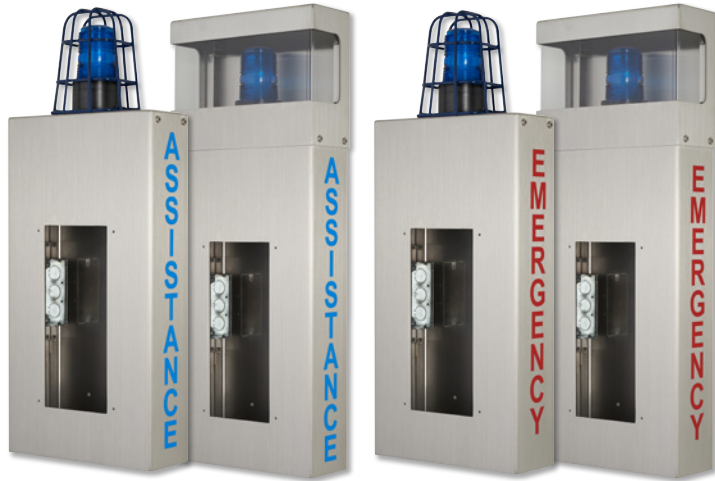
132 in H 6 in base diameter
3352.8 mm H 152.4 mm base diameter

Solar Panel:

26 1/2 in H 58 1/3 in W 1 3/8 in D
673.1 mm H 1481.6 mm W 34.9 mm D

IX|IXG Wall Boxes

Power required for the beacon—use PS-POE splitter to draw power from PoE+ network switch.



WB-CA (cage) WB-HA (hood)
ADA Compliant Wall Box
with ASSISTANCE Lettering

WB-CE (cage) WB-HE (hood)
ADA Compliant Wall Box with
EMERGENCY Lettering

- Includes UL Listed electrical box
- Made of 12-gauge stainless steel
- Beacon is always lit and strobes during emergency call-in
- Compatible with IX Series emergency stations
- ASSISTANCE or EMERGENCY lettering on two sides
- 4 in Depth and proper signage meet ADA requirements
- Interior bracket (right side) has 1-gang mounting pattern
- Built-in accessory mounting hardware with internal threads (female: M3 x .05, 1-gang spacing pattern)

Voltage, Current 24V DC, 200mA

Wiring Black: ground Red: +24V DC White: trigger

Operating Temp -40°F ~149°F

Material 12-gauge stainless steel

Mounting Surface mount directly to wall

Mounting Height 48" AFF for camera to be at 60"
44" AFF for call button to be at 48"

Dimensions	WB-CA, WB-CE:	WB-HA, WB-HE:
	26 in H 660.4 mm H	27 in H 685.8 mm H
	10 9/16 in W 268.3 mm W	10 13/16 in W 274.6 mm W
	3 7/8 in D 98.4 mm D	4 in D 101.6 mm D

IX|IXG Splitter & Power Supply



PS-POE
PoE Splitter

- Powers beacon on towers and wall boxes, eliminating the need for a separate power supply
- Only one cable is needed from the PoE+ switch when wired with an IX|IXG Series emergency station
- Mounts directly to the back of an emergency call station or 1-gang box
- Can withstand temperatures ranging from -40 to 140° F

Power Source PoE (803.2af)

Power Draw 8.4W

Output 24V DC, 350mA

Operating Temp -40°~140°F (-40°~60°C)

Dimensions	3 1/4 in H	82.6 mm H
	2 1/2 in W	63.5 mm W
	1 in D	25.4 mm D



PS-2420UL[®]
24V DC, 2A Power Supply

Cord Length 6'2"

Input 100–240V AC, 50/60Hz

Output 24V DC, 2A

Power Draw 60W, 100–125VA

Dimensions	6 9/16 in H	166.7 mm H
	3 9/16 in W	90.5 mm W
	2 1/16 in D	52.4 mm D

IX|IXG Accessories



GT-RY
External Signaling
Relay for IXG-2C7
p. 42



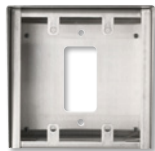
SBX-CON1
Conduit Box for
IX-EA, IX-DV,
and IX-DVM
p. 44



SBX-IDVF
Surface Mount
Box for IX-DVF
and IX-SSA
p. 44



SBX-IDVFRA
Surface Mount Box for
IX-DVF-L, IX-DVF-PR,
IX-DVF-2RA, IX-DVF-RA,
IX-SSA-2RA, and IX-SSA-RA
p. 44



SBX-2G/A
Surface
Mount Box
for IX-SS-2G
p. 45



SBX-IXGDM7
Surface Mount Back
Box for IX-DVF-4A,
IX-DVF-6, IX-DVF-10KP,
and IXG-DM7-HIDA
p. 45



IXG-DM7-BOX
Flush Mount
Back Box for
IXG-DM7-HIDA
p. 45



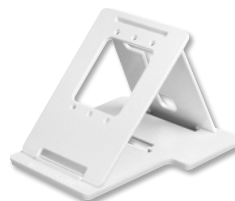
SBX-IXDV30
30° Angle Box
for IX-DV
p. 46



IX-MB
Mullion Mounting
Bracket for IX-DV
p. 46



IXG-FMK-2C7
Flush Mount Kit for
IXG-2C7 and IXG-2C7-L
p. 47



MCW-S/B
Desk Stand for
IXG-2C7 and
IXG-2C7-L
p. 47



MB-RF1
Retrofit Mounting Bracket
for IX-DVF-2RA, IX-DVF-RA,
IX-SSA-2RA, and IX-SSA-RA
(adapts emergency station
to an existing Code Blue®,
Talk-A-Phone® tower or wall box)
p. 47

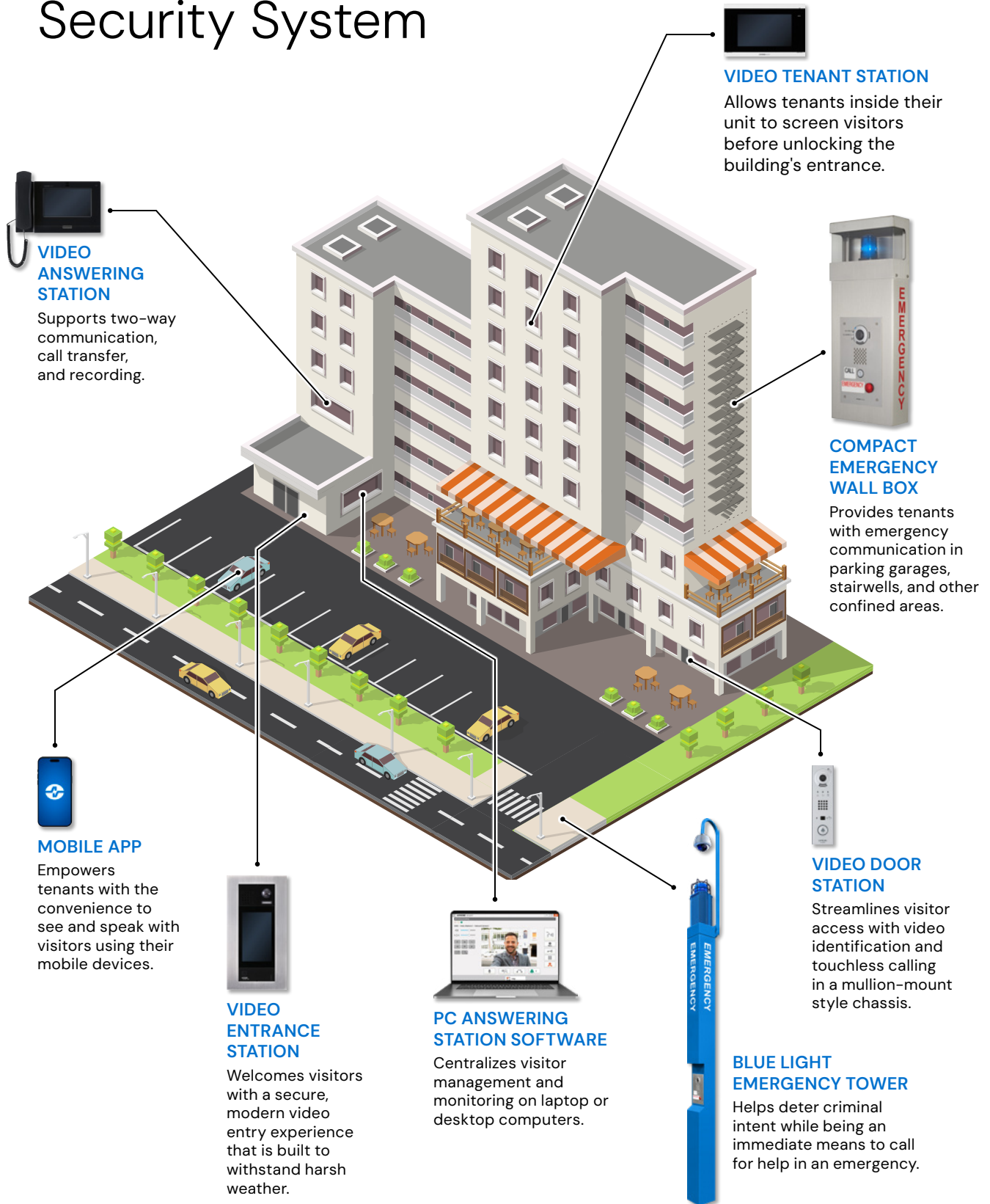
Connect the IX|IXG Series with Industry Leaders



See all our Technology Partners at
aiphone.com/partners/integrations



Create a Comprehensive Security System



JP Box Sets



Start with a box set and add up to three door stations and seven sub answering stations.

JPS-4AED
Box Set with JP-DA, JP-4MED, and PS-242OUL

JPS-4AEDV
Box Set with JP-DV, JP-4MED, and PS-242OUL

JPS-4AEDF
Box Set with JP-DVF, JP-4MED, and PS-242OUL

JP Power Supply



PS-242OUL[®]
24V DC, 2A Power Supply

Cord Length 6'2"

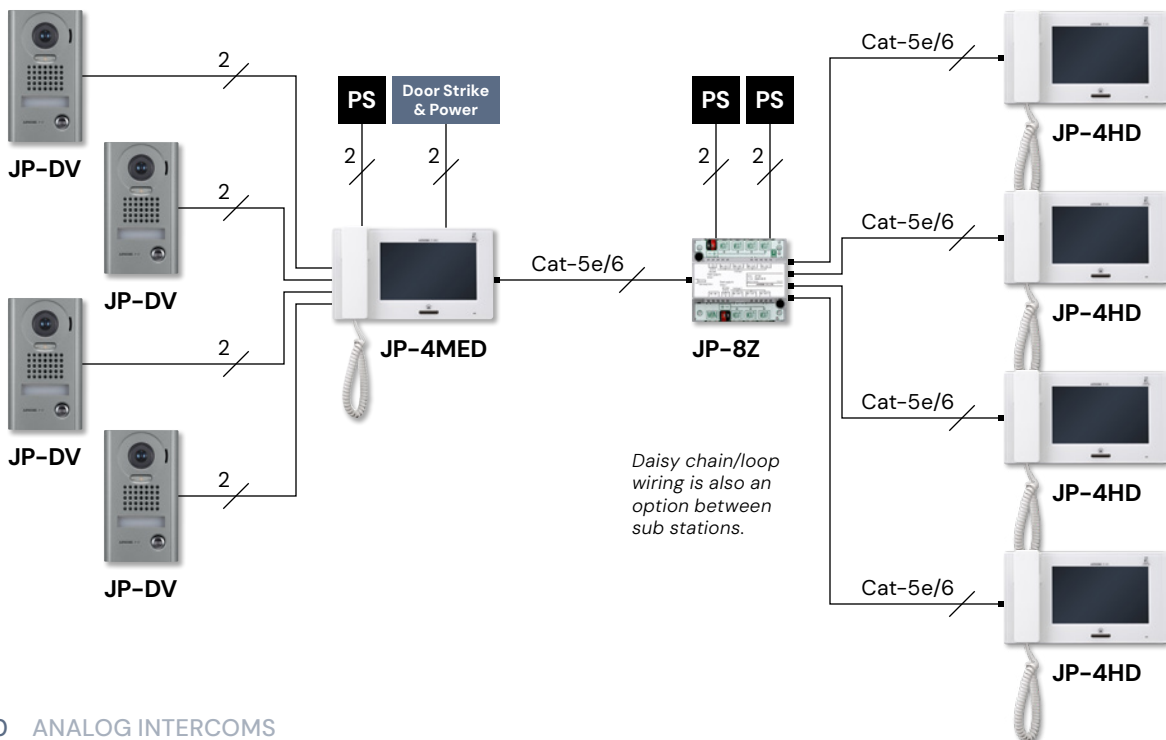
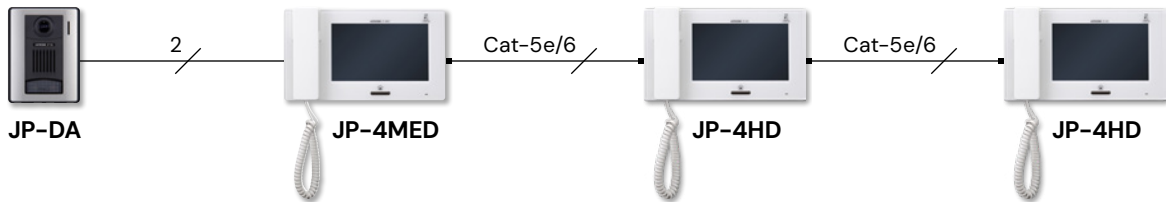
Input 100–240V AC, 50/60Hz

Output 24V DC, 2A

Power Draw 60W, 100–125VA

Dimensions 6 9/16 in H 3 9/16 in W 2 1/16 in D
166.7 mm H 90.5 mm W 52.4 mm D

Wiring Examples



JP Answering Stations



JP-4MED
Video Answering
Station with Handset



JP-4HD
Video Sub
Answering Station
with Handset

- Video identification and monitoring with 7" touchscreen
- All Call and Selective Call
- Room-to-room communication; hands-free or handset for privacy
- Continuous room monitoring
- Picture Memory
- Station partitioning with security code
- Door release button
- Optional service button
- PTZ and brightness control
- Eight selectable call tones
- Video out via supplied connector
- Security inputs for alerting stations
- Camera position and zoom can be set for call-in
- Removable media storage (memory card not included)

Power Source 24V DC—use PS-242OUL

Power Draw JP-4MED: 340mA
JP-4HD: 200mA

Communication Hands-free (VOX) or handset (full-duplex)

Video Display 7" LCD touchscreen

Picture Memory Internal/Built-In: record up to 20 calls (6 images per call) with up to 5 calls protected from overwriting
SD/SDHC card: record up to 1,000 calls (40 images per call) with up to 100 calls protected from overwriting

Door Release Two N/O or N/C dry contacts, 24V AC/DC, 500mA (use RY-1824L or RY-3DL for larger contact rating)

Mounting Surface mount directly to wall, to 1-gang box, or desk mount using MCW-S/B

Wire Type Cat-5e or Cat-6

Distance To distribution adaptor: 165'
Total cumulative distance between answering stations: 980'

Dimensions 5 3/4 in H 10 1/16 in W 1 15/16 in D
145 mm H 255 mm W 48 mm D

JP Door Stations



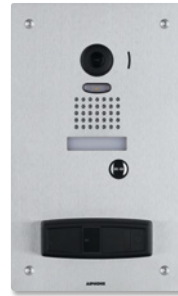
JP-DA
Video Door Station



JP-DV
Video Door Station



JP-DVF
Video Door Station



JP-DVF-PR
Card Access
Video Door Station



GT-D
Audio Door Station

- Digital PTZ camera provides clear video
- LED illumination automatically turns on in low light conditions
- Weather resistant
- JP-DV, JP-DVF, and JP-DVF-PR are vandal resistant
- JP-DA has an LED backlit call button
- JP-DV, JP-DVF, and JP-DVF-PR have an LED backlit nameplate
- JP-DVF-PR has a built-in 125 kHz Wiegand proximity reader designed for single-gang and mullion mounting

- Hands-free communication
- Weather resistant

Power Source Supplied by Answering Station

Communication Hands-free

Camera Type: 1/4" CMOS
View Area: 100° vertical x 70° horizontal

Operating Temp JP-DA, JP-DV, JP-DVF: -14°~140°F (-10°~60°C)
JP-DVF-PR: -4°~140°F (-10°~60°C)

Material JP-DA: fire resistant PC + ABS plastic
JP-DV: zinc die cast
JP-DVF, JP-DVF-PR: stainless steel

Mounting JP-DA: surface mount directly to wall or to 1-gang box
JP-DV: surface mount directly to wall
JP-DVF: flush mount with included back box or surface mount with SBX-DVF
JP-DVF-PR: flush mount with included back box or surface mount with SBX-IDVFRA

Wire Type 2-cond., low cap, non-shielded—use Aiphone #871802

Distance To answering station: 330'
To long distance/CCTV adaptor: 650'

Card Reader 5-14V DC power input; 45mA power draw; 125kHz frequency; CSA, FCC, CE, C-Tick certifications

Dimensions	JP-DA:	JP-DV:	JP-DVF:	JP-DVF-PR:
	5 1/8 in H	6 13/16 in H	8 1/4 in H	11 11/16 in H
	3 7/8 in W	3 7/8 in W	5 5/16 in W	7 in W
	1 3/16 in D	1 1/16 in D	27 mm D	2 1/16 in D
	129 mm H	173 mm H	209 mm H	297 mm H
	97 mm W	98 mm W	135 mm W	178 mm W
	30.5 mm D			52 mm D

Power Source Supplied by JP-4MED

Communication Hands-free (VOX)

Operating Temp 14°~140°F (-10°~60°C)

Material Plastic

Mounting Surface mount directly to wall

Wire Type 2-cond., low cap, PE, solid, non-shielded—use Aiphone #871802

Distance To answering station: 330'

Dimensions 5 1/8 in H 130.2 mm H
3 7/8 in W 98.4 in W
1 1/8 in D 28.6 in D

JP Adaptors



JPW-BA

Long Distance/CCTV Adaptor

- Extends wiring distance from door stations to answering stations up to 980'
- Allows for analog camera integration

Power Source 24V DC—use PS-2420UL

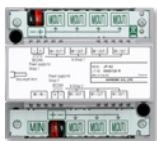
Capacity One adaptor unit for each video door/sub answering station located beyond the standard specified wire distance

Mounting DIN rail (included)

Wire Type 2-cond., low cap, PE, solid, non-shielded—use Aiphone #871802

Distance To door station: 650'
To answering station: 330'

Dimensions 4 5/16 in H 4 7/8 in W 2 3/8 in D
109 mm H 123 mm W 61 mm D



JP-8Z

Distribution Adaptor for Video Sub Answering Stations

- Only required for homerun wiring

Power Source 24V DC—use PS-2420UL

Capacity Up to seven video sub answering stations

Mounting DIN rail (included)

Wire Type Cat-5e

Distance To answering station: 650'
To sub answering station: 165'

Dimensions 4 5/16 in H 4 7/8 in W 2 3/8 in D
109 mm H 123 mm W 61 mm D

JP Accessories



IER-2
Call Extension Speaker
p.42



RY-1824L
Form C Door Release Relay
p.43



RY-3DL
Selective Door Release Adaptor
p.43



RY-ES
External Signaling Relay
p.42



MCW-S/B
Desk Stand for JP-4MED and JP-4HD
p.47



KAW-D
30° Angle Box for JP-DA
p.46



KMB-45
45° Mullion Mounting Bracket for GT-D and JP-DA
p.46



JK-MB
Mullion Mounting Bracket for JP-DV
p.46



MKW-P
1-Gang Mounting Plate for JP-DV
p.47



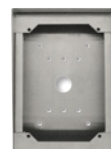
SBX-ACE
Surface Mount Box for GT-D or JP-DA and an Access Control Device
p.44



SBX-CON1
Conduit Box for JP-DA and JP-DV
p.44



SBX-DV30
30° Angle Box for JP-DV
p.46



SBX-DVF
Surface Mount Box for JP-DVF
p.44



SBX-IDVFRA
Surface Mount Box for JP-DVF-PR
p.44

JO Box Sets



Start with a box set and add one video expansion station, one JO-DV door station, and up to eight mobile apps.

JOS-1AW

Box Set with JO-DA, JO-1MDW, and PS-1820UL

JOS-1VW

Box Set with JO-DV, JO-1MDW, and PS-1820UL

JOS-1FW

Box Set with JO-DVF, JO-1MDW, and PS-1820UL

JO Power Supply



PS-1820UL[®]
18V DC, 2A
Power Supply

Cord Length 6'2"

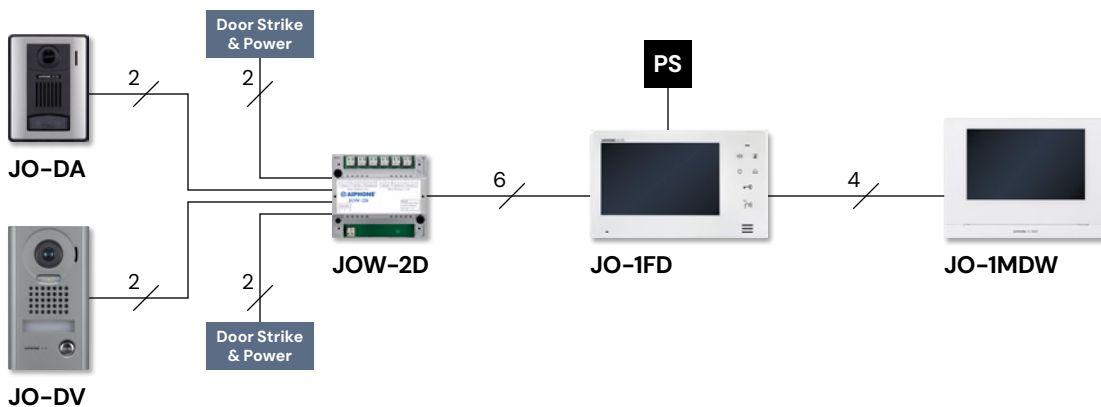
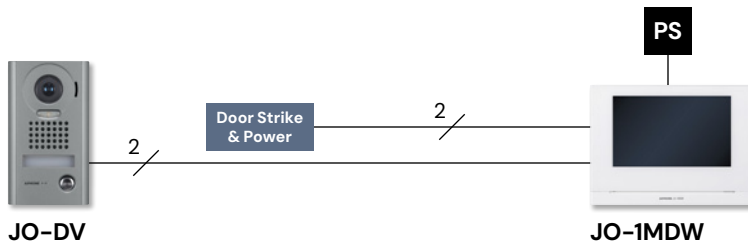
Input 100–240V AC, 50/60Hz

Output 18V DC, 2A

Power Draw 45W, 75–95VA

Dimensions 6 9/16 in H 166.7 mm H
3 9/16 in W 90.5 mm W
2 1/16 in D 52.4 mm D

Wiring Examples



JO Answering Stations



JO-1MDW
Video Answering Station



JO-1FD
Video Expansion Station

- Video identification and monitoring
- Slim design
- Hands-free communication or push-to-talk
- JO-1MDW allows up to eight free mobile apps

Power Source 18V DC—use PS-1820UL

Communication Hands-free (VOX) or push-to-talk (simplex)

Video Display JO-1MDW: 7" LCD touchscreen
JO-1FD: 7" LCD screen

Picture Memory Internal/Built-In: record up to ten calls (ten seconds per call) with up to five calls protected from overwriting
SD/SDHC card: record up to 1,000 calls (10 seconds per call) with up to 100 calls protected from overwriting

Door Release JO-1MDW: N/O dry contact, 24V AC/ DC, 1A
JO-1FD: N/O dry contact, 24V AC/DC, 500mA
(use RY-1824L for larger contact rating)

Network Interface WiFi

Wireless Frequency 2.4GHz

Wireless Protocols 802.11b/g/n

Mounting Surface mount directly to wall or desk mount using MCW-S/B

Wire Type 2-cond., mid cap, solid, non-shielded—use Aiphone #871802
4-cond., mid cap, solid, non-shielded—use Aiphone #871804
6-cond., mid cap, solid, non-shielded—use Aiphone #871804 + #871802

Distance To door station or expansion station: 165' (22AWG) 330' (18AWG)
To power supply: 16' (22AWG) 33' (18AWG)

Dimensions

JO-1MDW:		
6 1/8 in H	8 1/4 in W	1 1/16 in D
155 mm H	210 mm W	27 mm D
JO-1FD:		
5 1/8 in H	9 1/16 in W	13/16 in D
130 mm H	230 mm W	21 mm D

JO Mobile App



Intercom App Type B
JO Series Mobile App

- Calls can be answered and doors can be unlocked from virtually anywhere
- Up to eight free mobile apps can be downloaded per system
- Provides ability to monitor the video door station remotely
- Recorded calls can be viewed directly from a smartphone or tablet
- In-app door release slider prevents accidental unlocking
- Hands-free or push-to-talk communication
- Works with a variety of smartphones and tablets
- Available on Google Play™
- Available on the App StoreSM

Capacity Up to eight mobile apps per JO Series system

Door Release In-app slider activates dry contacts on JO-1MDW

Requirements One JO-1MDW and 2.4GHz WiFi connection

Network Protocols IPv4, TCP, UDP, SIP, RTP, RTCP, IGMP, DHCP

Bandwidth Usage 1.3MBs upload and download minimum

Operating System Android™
Apple® iOS

Communication Hands-free (VOX), push-to-talk (simplex)

JO Door Stations



JO-DA
Video Door Station



JO-DV
Video Door Station



JO-DVF
Video Door Station

- Fixed camera provides clear video
- LED illumination automatically turns on in low light conditions
- Weather resistant
- JO-DA has an LED backlit call button
- JO-DV and JO-DVF have an LED backlit nameplate
- JO-DV and JO-DVF are vandal resistant

Power Source Supplied by answering station or expansion station

Communication Hands-free

Camera Type: 1/4" CMOS
View Area: 2'1" vertical x 3'1in Horizontal at 20"

Operating Temp -4°~140°F (-20°~60°C)

Material JO-DA: fire resistant PC + ABS plastic
JO-DV: zinc die cast
JO-DVF: stainless steel

Mounting JO-DA: surface mount directly to wall or to 1-gang box
JO-DV: surface mount directly to wall
JO-DVF: flush mount with included back box or surface mount with SBX-DVF

Wire Type 2-cond., low cap, non-shielded—use Aiphone #871802

Distance To answering station or expansion station: 330'(18 AWG)

Dimensions

JO-DA:			
5 1/16 in H	3 13/16 in W	1 3/8 in D	
129 mm H	97 mm W	36 in D	
JO-DV:			
6 13/16 in H	3 7/8 in W	1 1/16 in D	
173 mm H	98 mm W	27 mm D	
JO-DVF:			
8 1/4 in H	5 5/16 in W		
209 mm H	135 mm W		

JO Adaptor



JOW-2D
Two-Door
Station Adaptor

- Allows a second door station to be connected to any JO Series system
- Can be added to existing systems for upgrade opportunities
- Selective door release unlocks the door currently being called or monitored

Power Source 18V DC (supplied by answering station)

Power Draw 18mA standby, 100mA max.

Relay Outputs JO-1MDW: 24V DC, 1A
JO-1FD: 24V DC, 500mA

Operating Temp 32°~104°F (0°~40°C)

Dimensions 4 1/4 in H 4 13/16 in W 2 3/8 in D
108 mm H 122.2 mm W 60.3 mm D

JO Accessories



IER-2
Call Extension
Speaker
p.42



RY-1824L
Form C Door
Release Relay
p.43



RY-ES
External
Signaling Relay
p.42



MCW-S/B
Desk Stand for
JO-1MDW and JO-1FD
p.47



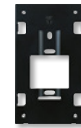
KAW-D
30° Angle Box
for JO-DA
p.46



KMB-45
45° Mullion Mounting
Bracket for JO-DA
p.46



JK-MB
Mullion Mounting
Bracket for JO-DV
p.46



MKW-P
1-Gang Mounting
Plate for JO-DV
p.47



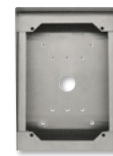
SBX-ACE
Surface Mount Box for
JO-DA and an Access
Control Device
p.44



SBX-CON1
Conduit Box JO-DA
and JO-DV
p.44



SBX-DV30
30° Angle Box
for JO-DV
p.46



SBX-DVF
Surface Mount
Box for JO-DVF
p.44

JV Box Sets



Start with a box set and add one video expansion station.

JVS-1V

Box Set with JV-DV, JV-1MD, and PS-2420UL

JVS-1F

Box Set with JV-DVF, JV-1MD, and PS-2420UL

JV Power Supply



PS-2420UL®
24V DC, 2A Power Supply

Cord Length 6'2"

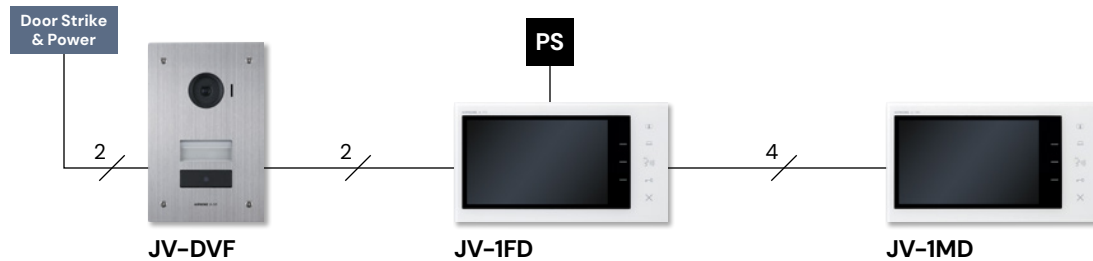
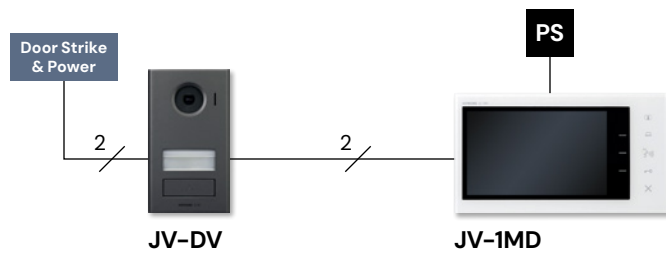
Input 100–240V AC, 50/60Hz

Output 24V DC, 2A

Power Draw 60W, 100–125VA

Dimensions 6 9/16 in H 3 9/16 in W 2 1/16 in D
166.7 mm H 90.5 mm W 52.4 mm D

Wiring Examples



JV Answering Stations



JV-1MD
Video Answering Station



JV-1FD
Video Expansion Station

- Video identification and monitoring with 7" screen
- Picture memory
- Slim design
- Hands-free communication or push-to-talk
- One output to control a secondary device like a light or gate
- Simple daisy chain wiring

Power Source 24V DC—use PS-2420UL

Communication Hands-free (VOX) or push-to-talk (simplex)

Video Display 7" LCD screen

Picture Memory JV-1MD: internal memory records up to 30 images, 1 image per recording
JV-1FD: N/A

Door Release N/O dry contact, 24V AC/ DC, 1A

Mounting Surface mount directly to wall or desk mount using MCW-S/B

Wire Type 2-cond., mid cap, solid, non-shielded—use Aiphone #871802
4-cond., mid cap, solid, non-shielded—use Aiphone #871804
6-cond., mid cap, solid, non-shielded—use Aiphone #871804 + #871802

Distance To door station or expansion station: 165' (22 AWG) 330' (18 AWG)
To power supply: 16' (22 AWG) 33' (18 AWG)

Dimensions 5 1/8 in H 9 1/16 in W 13/16 in D
130 mm H 230 mm W 21 mm D

JV Door Stations



JV-DV
Video Door Station



JV-DVF
Video Door Station

- Fixed camera provides clear video
- Backlit call button and nameplate
- LED illumination automatically turns on in low-light conditions
- IP54 rated to withstand dust and water
- IK08 vandal resistance
- Corrosion-resistant

Power Source Supplied by answering station or expansion station

Communication Hands-free

Camera Type: 1/4" CMOS
View Area: 2'1" vertical x 3'1 in Horizontal at 20"

Door Release Door station output: N/O dry contact, 24V AC/ DC, 1A
Second door station output: N/O wet contact, 500mA or less, 12V DC
Door station input: request to exit, N/O dry contact

Operating Temp -4°~140°F (-20°~60°C)

Material JV-DV: aluminum die cast
JV-DVF: stainless steel

Mounting JV-DV: surface mount directly to wall
JV-DVF: flush mount with included back box or surface mount with SBX-DVF

Wire Type 2-cond., low cap, non-shielded—
use Aiphone #871802

Distance To answering station or expansion station: 330' (18 AWG)

Dimensions JV-DV:
6 11/16 in H 3 3/16 in W 15/16 in D
170 mm H 97 mm W 23.7 mm D

JV-DVF:
8 1/4 in H 5 5/16 in W
209 mm H 135 mm W

JV Accessories



IER-2
Call Extension
Speaker
p.42



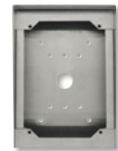
RY-1824L
Form C Door
Release Relay
p.43



RY-ES
External
Signaling Relay
p.42



SBX-CON1
Conduit Box
for JV-DV
p.44



SBX-DVF
Surface Mount
Box for JV-DVF
p.44



SBX-DV30
30° Angle Box
for JV-DV
p.46



JK-MB
Mullion Mounting
Bracket for JV-DV
p.46



MCW-S/B
Desk Stand for
JV-1MD and JV-1FD
p.47



MKW-P
1-Gang Mounting
Plate for JV-DV
p.47

REMOTE MANAGEMENT

Expand your capabilities to take on more projects.



REDUCE SITE VISITS

Eliminate costly truck rolls. Make the visits virtual and respond to customer needs from your office.



SAVE TIME ON SETUP

Configure complex systems in minutes with an intuitive interface that makes setup fast and simple.



STAY RESPONSIVE

Perform system health checks remotely. Minimize downtime and resolve issues without site visits.



CUSTOMIZE WITH EASE

Tailor settings for each customer's unique requirements. Flexible settings easily adapt to every project.



Learn more about Remote Management on AiphoneCloud

Relay Accessories



IER-2
Call Extension Speaker
for the JO Series,
JP Series, and JV Series

- Announces chime tone only
- Adjustable volume (three positions)
- Indoor mounting

Material ABS plastic

Mounting Surface mount directly to wall or to 1-gang box

Wire Type Single pair of wires, non-polarized

Dimensions 4 3/4 in H
3 7/16 in W
1 1/8 in D

120 mm H
88 mm W
29 mm D



GT-RY
External Signaling Relay
for the IXG-2C7

- N/O contact output
- Provides relay for entrance light control or an additional buzzer at residence

Power Source 24V DC—supplied by station

Contact Rating 24V AC/DC, 500mA

Dimensions 1 3/8 in H
2 3/16 in W
7/8 in D

35 mm H
55 mm W
22 mm D



RY-ES
External Signaling Relay for the JO Series, JP Series, and JV Series

- Triggers an external device when the intercom is called
- External device remains on during chime at connected station

Power Source 12–24V DC, 12–16V AC—supplied by answering station

Contact Rating 125V AC, 1.0A
30V DC, 1.0A

Dimensions 4 1/8 in H
2 7/16 in W
1 5/8 in D

104.8 mm H
61.9 mm W
41.3 mm D

Door Release Accessories



RY-3DL

Selective Door Release
Adaptor for the JP Series

- Triggers door release where communication is established
- Normally open (N/O) contacts for electric strike
- Normally closed (N/C) contacts for magnetic locks

Power Source Shared with answering station—PS-2420UL

Contact Rating Three Form C dry contacts,
50V AC, 1A
30V DC, 1A

Distance To answering station:
165' (22 AWG) 330' (18 AWG)

Dimensions 5 1/2 in H 3 in W 1 1/2 in D
139.7 mm H 76.2 mm W 38.1 mm D



RY-1824L

Form C Door Release Relay for the
JO Series, JP Series, and JV Series

- Normally open (N/O) contact with high current rating for door strikes
- Normally closed (N/C) contact with high current for magnetic locks
- Use with any 18–24V system that requires door release

Power Source Supplied by answering station

Relay Input 18–24V DC, red and black wires, 22AWG

Relay Output Brown, yellow, and orange wires, 18AWG

Output Rating 30V DC, 5A
250V AC, 8A

Wire Type 2-cond. to door release and
2-cond. to strike with power
for strike wired in system

Dimensions 1 7/16 in H 13/16 in W 7/16 in D
36.5 mm H 20.6 mm W 11.1 mm D

Wires extend approximately
7 1/2 in 190.5 mm

Mounting Accessories



SBX-COBI

Conduit Box for the IX-EA, IX-DV, IX-DVM, JO-DA, JO-DV, JP-DA, JP-DV, and JV-DV

- Compatible with most Aiphone surface mounted door stations
- Drilled attachment holes for different standard mounting boxes, including 1- and 2-gang
- Conduit knockout at the base
- Tamper-resistant screw at the top
- Matte black coloring

Material Front box: mild steel
Back plate: stainless steel

Mounting Surface mount to 1-gang or to 2-gang box

Dimensions 11 in H 6 in W 2 in D
279.4 mm H 152.4 mm W 50.8 mm D



SBX-ACE

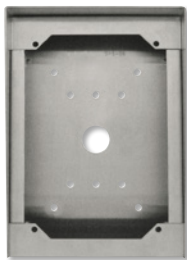
Surface Mount Box for the GT-D, JO-DA, or JP-DA and an Access Control Device

- Provides space for one 1-gang intercom and one access control device
- Vandal resistant
- Hood provides weather resistance
- Includes blank stainless steel cover for wide range of mounting options
- Openings at bottom allow for moisture drainage

Material 18GA stainless steel

Mounting Surface mount directly to wall, to 1-gang box, or to 2-gang box with included hardware (8 x 32 with T-15 Torx head)

Dimensions 7 1/16 in H 9 1/8 in W 4 1/4 in D
179.4 mm H 231.8 mm W 108 mm D



SBX-DVF

Surface Mount Box for the JO-DVF, JP-DVF, and JV-DVF

- Hood provides weather resistance
- Includes space inside for wiring
- Mounts directly to wall
- Openings at bottom allow for moisture drainage



SBX-IDVF

Surface Mount Box for the IX-DVF and IX-SSA

Material SBX-DVF: 16GA stainless steel (outer layer), 18GA stainless steel (inner layer)
SBX-IDVF, SBX-IDVFRA: 18GA stainless steel

Mounting Surface mount directly to wall, to 1-gang box, or to 2-gang box with included hardware (8 x 32 with T-15 Torx head)

Dimensions SBX-DVF:
8 5/16 in H 5 1/2 in W 3 3/16 in D
211.1 mm H 139.7 mm W 81 mm D

SBX-IDVF:
10 7/16 in H 5 15/16 in W 3 5/16 in D
265.1 mm H 150.8 mm W 84.1 mm D

SBX-IDVFRA:
11 11/16 in H 7 in W 3 5/16 in D
296.9 mm H 177.8 mm W 84.1 mm D



SBX-IDVFRA

Surface Mount Box for the IX-DVF-2RA, IX-DVF-2RA-FR, IX-DVF-L, IX-DVF-PR, IX-DVF-RA, IX-DVF-RA-FR, IX-SSA-2RA, IX-SSA-2RA-FR, IX-SSA-RA, IX-SSA-RA-FR, and JP-DVF-PR



SBX-IXGDM7
Surface Mount Box
for IX-DVF-10KP,
IX-DVF-4A, IX-DVF-6,
and IXG-DM7-HIDA

- 1-gang and 2-gang mounting hole patterns
- One conduit knockout at bottom
- Built-in rain hood

Material 18GA stainless steel

Mounting Surface mount directly to wall, to 1-gang box, or to 2-gang box with included hardware (8 x 32 with T-15 Torx head)

Dimensions 13 3/4 in H 7 5/16 in W 3 1/16 in D
349.3 mm H 185.7 mm W 77.8 mm D



IXG-DM7-BOX
Flush Mount Back Box
for IXG-DM7-HIDA

- Steel construction
- Six conduit knockouts
- Sold separately for pre-installation convenience

Material Steel

Mounting Surface mount directly to wall

Dimensions 12 1/2 in H 6 1/8 in W 2 3/8 in D
317 mm H 156 mm W 60 mm D



SBX-2G/A
Surface Mount
Box for IX-SS-2G

- Weather resistant
- Includes space inside for wiring
- Mounts to 1-gang box or ring
- Can mount directly to wall surface
- Includes hardware for mounting intercom

Material 18GA stainless steel

Mounting Surface mount directly to wall or to 1-gang box with included hardware (8 x 32 with T-15 Torx head)

Dimensions 4-13/16 in H 4 7/8 in W 4 in D
122.2 mm H 123.8 mm W 101.6 mm D



SBX-NVP/A
Surface Mount Box for
IX-NVP and IX-NVP2

- Weather resistant
- Includes space inside for wiring
- Mounts to 1-gang box or ring
- Can mount directly to wall surface
- Powder-coated white baked epoxy finish

Material 1/8" rolled steel

Mounting Surface mount directly to wall or to 1-gang box with included hardware (8 x 32 with T-15 Torx head)

Dimensions 8 5/8 in H 6 5/8 in W 2 3/4 in D
219.1 mm H 168.3 mm W 69.9 mm D

Mounting Accessories



KAW-D
30° Angle Box
for JO-DA
and JP-DA

- Provides a better viewing angle for the camera
- Compatible with Aiphone 1-gang surface mount door stations
- Angles 1-gang door stations outward by 30°
- Mounts to either left or right side of door
- Hinged cover for mounting door station

Material ABS plastic

Mounting Surface mount directly to wall or to 1-gang box

Dimensions 5 9/16 in H 4 1/8 in W 2 3/8 in D
141.3 mm H 104.8 mm W 60.3 mm D



KMB-45
45° Mullion
Mounting
Bracket for
GT-D, JO-DA,
and JP-DA

- Compatible with Aiphone 1-gang surface mount door stations
- Mounts door stations to mullion with a 45° angle
- Mounts to either left or right side of door
- Provides a better viewing angle for the camera

Material Aluminum

Mounting Surface mount directly to side of mullion

Dimensions 5 1/2 in H 139.7 mm H
5 1/2 in W 139.7 mm W
1 3/4 in D 44.5 mm D



SBX-DV30
30° Angle Box for JO-DV,
JP-DV, and JV-DV



SBX-IXDV30
30° Angle Box
for IX-DV

- Provides a better viewing angle for the camera
- Designed for angle mounting door stations outward by 30°
- Applicable for wide or double door entrances

Material SBX-IXDV30: 16GA stainless steel
SBX-DV30: 18GA stainless steel

Mounting Surface mount directly to wall or to 1-gang box

Dimensions SBX-IXDV30:
8 1/4 in H 4 1/8 in W 2 15/16 in D
209.6 mm H 104.8 mm W 74.6 mm D
SBX-DV30:
6 13/16 in H 3 5/8 in W 2 7/8 in D
173 mm H 92.1 mm W 73 mm D



IX-MB
Mullion Mounting
Bracket for IX-DV



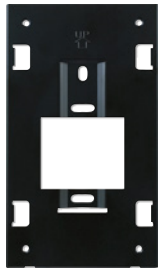
JK-MB
Mullion Mounting Bracket for
JO-DV, JP-DV, and JV-DV

- Door frame or mullion mount
- Fits station precisely and conceals wiring inside
- Mounts to either left or right side of door

Material Aluminum

Mounting Surface mount directly to mullion or to 1-gang box

Dimensions IX-MB:
8 1/8 in H 4 1/2 in W 1/2 in D
206.4 mm H 114.3 mm W 12.7 mm D
JK-MB:
6 13/16 in H 3 7/8 in W 3/16 in D
173 mm H 98.4 mm W 4.8 mm D

**MKW-P**

1-Gang Mounting Plate for
JO-DV, JP-DV, and JV-DV

- Hardware included
- Adapts door station to a standard 1-gang box or ring

Dimensions 7 in H 4 in W 3/8 in D
177.8 mm H 101.6 mm W 9.5 mm D

**MCW-S/B**

Desk Stand for IXG-2C7, IXG-2C7-L, JO-1FD,
JO-1MDW, JP-4HD, JP-4MED, JV-1FD, and JV-1MD

- Desktop or countertop installations
- Station is propped up for easier viewing
- Pre-drilled mounting holes
- Mounting hardware included
- Constructed with sturdy ABS plastic
- Adjustable to 45° or 60° angles

Material ABS plastic

Dimensions 6 1/2 in H 6 1/2 in W 8 in D
165.1 mm H 165.1 mm W 203.2 mm D

**MB-RF1**

Retrofit Mounting Bracket for IX-DVF-2RA,
IX-DVF-4A, IX-DVF-6, IX-DVF-HW, IX-DVF-L,
IX-DVF-RA, IX-SSA-2RA, and IX-SSA-RA

- Adapts door or emergency station to a Code Blue® or Talk-A-Phone® tower or wall box
- Powder-coated exterior

Material 18GA CRS

Mounting Surface mount directly to tower or to wall box

Dimensions 11 3/4 in H 8 1/2 in W 1 1/4 in D
298.5 mm H 215.9 mm W 31.8 mm D

**IXG-FMK-2C7**

Flush Mount Kit for the
IXG-2C7 and IXG-2C7-L

- Provides ability to flush mount station into a wall
- Includes mounting hardware

Mounting Flush mount

Material Panel: self-extinguishing resin
Frame and back box:
self-extinguishing plastic

Dimensions 7 13/16 in H 11 7/16 in W 1 3/16 in D
199 mm H 290 mm W 30 mm D

Paging Accessories



AH-16T
Horn Speaker

- Compression type, double re-entrant loud horn speaker
- Integrated 16W, 25/70V rotary select transformer
- 121dB volume rating
- Built-in transformer for 25/70/100V systems
- Horizontal or vertical mount
- Adjustable mounting base

Average Sensitivity 110dB SPL, 1W/1M

Power Rating 16W RMS, EIA 426A standard

Calculated Output 121dB SPL, 16W/ 1M

Frequency Response 450Hz–15kHz EIA, 426A standard

Nominal Coverage Angle 110° included angle, -6dB/2kHz, half space

Audio Connection Screw terminals

Transformer 25/70V 16W–5 tap, rotary select (16W, 8W, 4W, 2W, 1W)

Finish Tan enamel

Dimensions Horn:
7 5/8 in diameter;
9 3/16 in depth
193.7 mm diameter;
233.4 mm depth
Base:
3 1/8 in diameter,
79.4 mm diameter



SP-2570N
Ceiling Speaker

- Indoor use
- Can be used with any Aiphone system that has paging ability (see specifications for requirements)
- Ceiling flush mount
- Dual cone
- Excellent sound and voice reproduction
- Easy installation in a drop tile ceiling using the optional SSB-3 support bracket

Power Rating 8W RMS

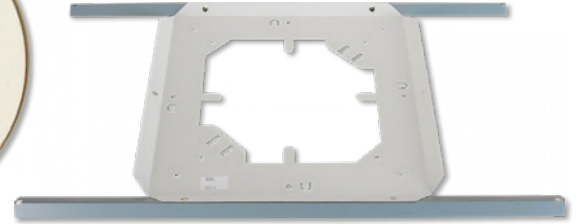
Impedance 8Ω direct or 25/70V transformer

Frequency Response 65Hz–17kHz

Wattage Taps 25V: 0.325W, 0.625W, 1.25W, 2.5W, and 5W
70V: 0.312W, 0.625W, 1.25W, 2.5W, and 5W

Material SP-2570N: 22 gauge steel zincrometal with white semi-gloss powdered epoxy finish
SSB-3: rust-resistant steel

Dimensions SP-2570N:
8 in speaker diameter;
12 7/8 in baffle diameter
203.2 mm speaker diameter;
327 mm baffle diameter
SSB-3:
14 5/8 in H 23 3/4 in W 9/16 in D
371.5 mm H 603.3 mm W 14.3 mm D



SSB-3
Ceiling Support Bracket for SP-2570N



MD35M®
35W Paging Amplifier



MD60M®
60W Paging Amplifier



MD120M®
120W Paging Amplifier

- Can be used with any Aiphone system that has paging ability (see specifications for requirements)
- Three channel inputs
- Wide frequency response with very low distortion
- Balanced microphone input
- Phantom power on mic input with selector
- Balanced telephone paging input
- VoIP telephone paging input
- Tel and mic VOX sensitivity control
- Auxiliary input with stereo summing
- Auxiliary input gain
- Independent input controls (bass and treble)
- Direct muting or unmuting
- 12V accessory power output
- 600Ω or 10K (VoIP) MOH output with separate output level control
- 8Ω, 25V, and 70V output impedance
- Rack mounting with optional kits

Power Source 120V AC, 50–60Hz

Output 35/60/120W RMS

Input Microphone: 250Ω balanced
Telephone: 600Ω balanced
Auxiliary: 47kΩ
VoIP: 50kΩ unbalanced

Distortion Less than 0.5% THD

Frequency Response 20Hz–20kHz ± 2dB

Dimensions 1 3/4 in H 8 1/2 in W 12 1/2 in D
44.5 mm H 215.9 mm W 317.5 mm D

Index

AC-10K-1G 12	IX-DVF-L 19	JO-DV 36	SBX-DVF 44
AC-10K-M 12	IX-DVF-PR 19	JO-DVF 36	SBX-IDVF 44
AC-2DE 11	IX-DVF-RA 21	JOS-1AW 34	SBX-IDVFRA 44
AC-2DM-B 6	IX-DVM 19	JOS-1FW 34	SBX-IXDV30 46
AC-2DM-W 6	IX-EA 19	JOS-1VW 34	SBX-IXGDM7 45
AC-BT-10K 13	IXG-2C7 15	JOW-2D 37	SBX-NVP/A 45
AC-BT-M 13	IXG-2C7-L 15	JP-4HD 31	SP-2570N 48
AC-C 11	IXG-DM7-BOX 45	JP-4MED 31	SSB-3 48
AC-CA1 10	IXG-DM7-HIDA 18	JP-8Z 33	TW-MKL 24
AC-IOE 11	IXG-FMK-2C7 47	JP-DA 32	TW-SA 24
AC Key 5	IXG-MK 14	JP-DV 32	TW-SE 24
AC Nio Admin 5	IXGS-TE 17	JP-DVF 32	TWS-Z1 25
AC-PC-40 13	IXGW-LC 22	JP-DVF-PR 32	TWS-Z2 25
AC-PC-H26 13	IXGW-TGW 17	JPS-4AED 30	TWS-Z4 25
AC-PF-40 13	IX-MB 46	JPS-4AEDF 30	TW-TA 24
AC-PF-H26 13	IX-MV7-B 14	JPS-4AEDV 30	TW-TA-ARM 24
AC-PROX-1G 12	IX-MV7-HB 14	JPW-BA 33	TW-TA-ARM-SP 24
AC-PS1267 11	IX-MV7-HB-L 14	JV-1FD 39	TW-TA-SP 24
AC-PT-40 13	IX-MV7-HW-JP 14	JV-1MD 39	TW-TE 24
AC-PT-H26 13	IX-MV7-W 14	JV-DV 40	TW-TE-ARM 24
ACS-2DR 7	IX-NVP 20	JV-DVF 40	TW-TE-ARM-SP 24
ACS-2DR-C 7	IX-NVP2 20	JVS-1F 38	TW-TE-SP 25
ACS-ELV 8	IX-RS-B 15	JVS-IV 38	WB-CA 26
ACS-IO 9	IX-RS-W 15	KAW-D 46	WB-CE 26
AH-16T 48	IX-SOFT 16	KMB-45 46	WB-HA 26
GT-D 32	IX-SOFT-10 16	MB-RF1 47	WB-HE 26
GT-RY 42	IX-SOFT-3 16	MCW-S/B 47	
IER-2 42	IX-SOFT-5 16	MD120M 49	
IPW-10VC 23	IX-SS-2G 20	MD35M 49	
IPW-1VC 23	IX-SSA 20	MD60M 49	
IPW-POE8 23	IX-SSA-2RA 21	MKW-P 47	
IX-DV 19	IX-SSA-RA 21	PS-1820UL 34	
IX-DVF 19	IXW-MAA 22	PS-2420UL 30	
IX-DVF-10KP 19	IXW-MAA-SOFT 16	PS-POE 26	
IX-DVF-2RA 21	IXW-MAA-SOFT-5 16	RY-1824L 43	
IX-DVF-4A 18	IXW-MAA-SOFT-10 16	RY-3DL 43	
IX-DVF-6 18	IXW-PBXA 22	RY-ES 42	
IX-DVF-HW 19	JK-MB 46	SBX-2G/A 45	
	JO-1FD 35	SBX-ACE 44	
	JO-1MDW 35	SBX-CON1 44	
	JO-DA 36	SBX-DV30 46	

Contact Us



REGIONAL SALES

Over 40 regional sales experts and engineers are here to provide support at any stage of your security journey, offering in-person product demonstrations, site walks, and system design services for customers across the Americas.

NATIONAL ACCOUNTS

Our dedicated team specializes in projects for national and enterprise customers. We tailor to your specific requirements, like creating A&E specifications, providing constructive solutions, developing custom products, writing support literature, and offering integration with multiple technology platforms.

We are here to help, contact us anytime.

Info@aiphone.com (800) 692-0200

OFFICE LOCATIONS

HEADQUARTERS
Redmond, WA

CANADIAN OFFICE
Laval, QC

EASTERN OFFICE
Cherry Hill, NJ

AiphoneCloud

From intercom remote management to cloud-based access control, you can leverage our full platform of cloud services to deliver smarter, faster results for your customers.

aihone.cloud

